

CITY OF LOS ANGELES | DEPARTMENT OF RECREATION & PARKS | METRO REGION | NORTH DISTRICT

YOSEMITE RECREATION CENTER'S WINTER CAMP

FOR CHILDREN AGES 6- 12

REGISTRATION STARTS 11/25 AT 11AM! ONLINE ONLY!

Camp Hours 8am-4pm

Extended Care 4pm-6pm

Week 1 | 16-20 Dec | \$250

Trip on 12/19/24 to Knott's Berry Farm

Extended Care | \$30

Week 2 | 23-27 Dec | \$160

No camp on 12/25/24

Extended Care | \$22

Extended care not offered on 12/24/24

Week 3 | Dec 30- Jan 3 | \$160

No camp on 1/1/25

Extended Care | \$22

Extended care not offered on 12/31/24

Lunch is not included. A small snack is provided.

The Fine Print:

- Registration starts November 4th at 11am, online only.
- Registration is on a first come first served basis and is limited to 45 campers.
- Enrollment requires submission of registration form. WE ARE GOING PAPERLESS - after enrollment, look for an invite to create an account with ePACT, a digital form website, to complete the participant's registration information.
- Request for carpool, same group or specific counselor cannot be guaranteed.
- Refunds will only be granted if the program is canceled by the center. 15% Administrative fee applies to all refund request.
- Refunds requested week of camp will not be granted.
- Please review other side of flyer for important camp details. Please refer to our camp manual for all other polices and procedures.
- Camp program subject to cancellation or change.



(323) 257-1644



**1840 Yosemite Drive,
Los Angeles , CA 90041**



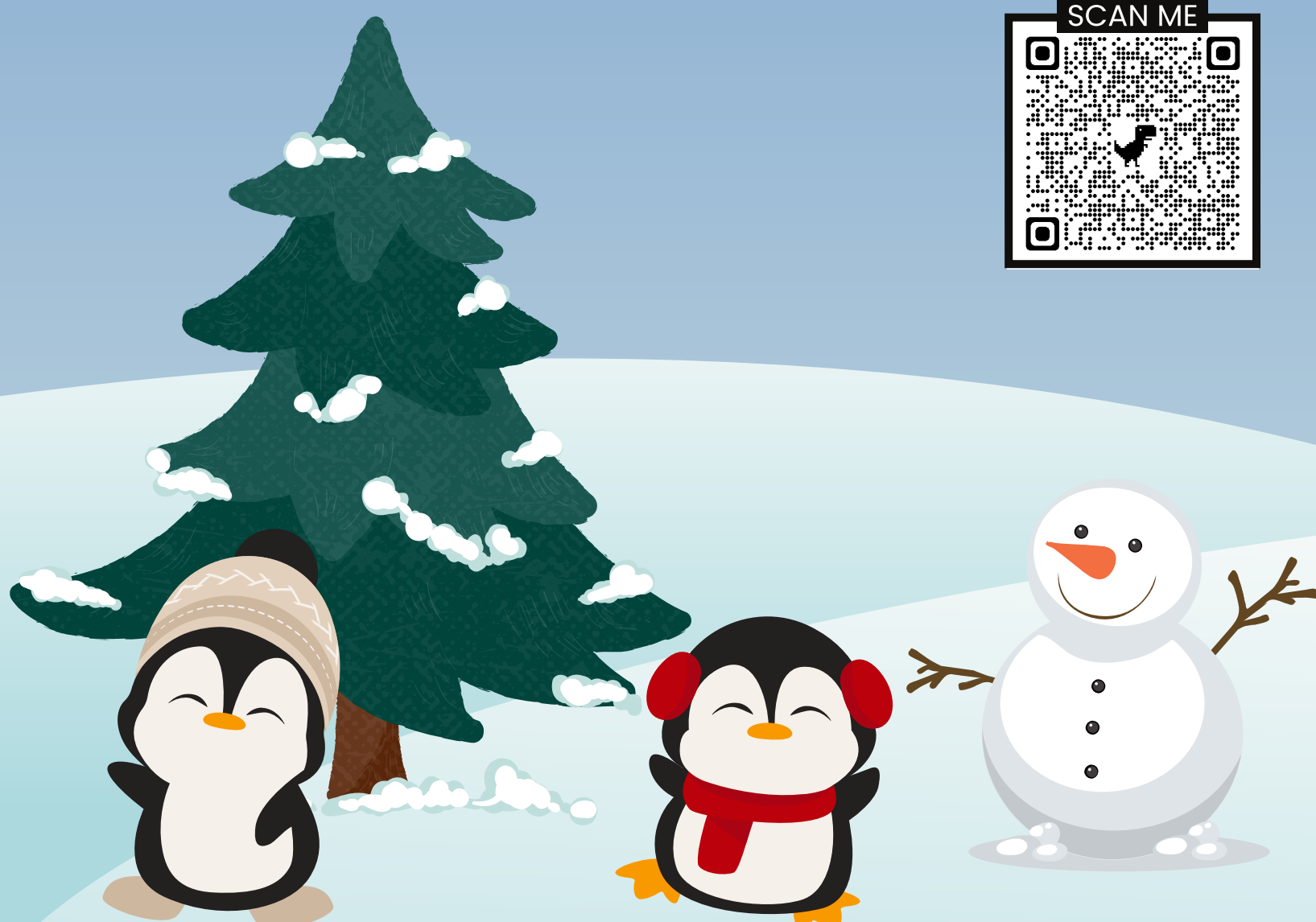
**YosemitePark.RecreationCenter
@lacity.org**



LAParks.org/reccenter/yosemite



Yosemite.RC



Persons with disabilities are welcome to participate in our programs. Reasonable accommodations will be made with prior arrangement. Please be aware that some accommodations may take 30 days or longer. Please submit your request for an accommodation as soon as possible.



WINTER CAMP

RULES & GUIDELINES

The following rules are meant to be discussed and understood by both parents and participants.

1. Participants are expected to participate in ALL activities.
2. Safety ratios of 1 staff per 10 children.
3. Participants must follow directions at ALL times.
4. Sandals or open toe shoes should NOT be worn to program.
5. All participants must show respect for themselves, other participants and the program staff.
6. Participants must take a buddy with them and notify staff when they go to the restroom and/or to get a drink of water.
7. Participants must let a counselor know where they are going at ALL times.
8. Children must not harm anyone. No fighting, pushing, shoving, or throwing debris or objects. Children must not use profanity.
9. Participants are expected to handle Yosemite equipment, games, material and supplies appropriately.
10. Repeated reminders of inappropriate behavior, violent behaviors, bullying, discrimination or behavior that creates a safety concern will result in removal from the program.

Please refer to Day Camp Manual for more detailed program policies and procedures.



Persons with disabilities are welcome to participate in our programs. Reasonable accommodations will be made with prior arrangement. Please be aware that some accommodations may take 30 days or longer. Please submit your request for an accommodation as soon as possible.