

# CITY OF LOS ANGELES DEPARTMENT OF RECREATION AND PARKS



**Rustic Canyon  
Recreation Center**  
601 Latimer Road, Santa Monica, CA 90402



601 LATIMER ROAD,  
SANTA MONICA, CA 90402  
PH: (310) 454-5734 FAX: (310) 575-8015  
EMAIL: RUSTICCANYON.RC@LACITY.ORG

<https://www.laparks.org/reccenter/rustic-canyon>

# Fall 2024



**CLASSES RUN: OCTOBER 7TH—DECEMBER 21ST 2024  
(UNLESS OTHERWISE NOTED IN THE BROCHURE)**

Rustic Canyon Closed: October 14th, November 11th, November 28th & November 29th

**Online Registration: SEPTEMBER 9TH, 2024**

The classes, programs, and events in this brochure are subject to cancellation.  
**Building Community Through, People, Parks, and Programs**

# A Brief History of Rustic Canyon Recreation Center

“You probably noticed a banner reading ‘Uplifters Ranch’ over Latimer Road as you drove in. That’s because Rustic Canyon Recreation Center once belonged to the Uplifters—a fun-loving group of business and professional men from the Los Angeles Athletic Club.

Originally this land was the site of the nation’s first experimental forestry station, and part of the Edmond Ranch. In 1920 it came on the market, and was purchased by Harry Haldeman as a secluded country site for the Uplifter’s Annual Outing.

The group’s name referred both to the uplifting of the arts, and to the hoisting of cocktails. All members were urged to participate in some create endeavor sponsored by the Club—chorus, band, drama, and operettas. Their rehearsals culminated in a series of performances at the Annual Outing, a 4-day men-only event each fall.

The Edmond ranch house served as the Uplifters’ first clubhouse, but was destroyed by fire in 1922. It was replaced by this building, designed by architect William Dodd, complete with large dining room (now the Gallery) and auditorium (Gym) with a stage and large pipe organ. The building was dedicated in September, 1923.

Each member of the Uplifters was allowed to lease a lot for \$100, and many rustic log cabins were built around the clubhouse. Howard Latimer laid out the roads and stone walls, and built the first house (#1 Latimer Road).

By 1927 they had added a swimming pool, tennis courts, riding stables, and a full-fledged polo facility. Then, during the Depression, several of the original members lost their homes. Newcomers, mostly associated with the motion picture industry, built larger, more sophisticated homes. The clubhouse was run for profit by a professional manager, and, with Prohibition ended, liquor was served openly in the ‘Polo Lounge.’

In 1945 the polo field was subdivided by a realtor, and the clubhouse and grounds were sold in 1947 to Greek shipping magnate George Embiracos, who operated the facility as a post racquet club.

Embiracos offered the property for sale in 1953, and with a gift of \$200,000 from Maybell Machris, the Santa Monica Canyon Civic Association purchased the 8-acre site. The SMCAA donated the property, along with the neighboring eucalyptus grove, to the Los Angeles City Department of Recreation and Parks, and on November 19, 1953, Rustic Canyon Recreation Center was born.”

From Pacific Palisades, Where the Mountains Meet the Sea  
By Betty Lou Young, 1983

# Welcome to Rustic Canyon Recreation Center!

Rustic Canyon is a hidden jewel that allows one to experience nature at its finest while enjoying all the features of a traditional park. Rustic Canyon has gone through a rejuvenation. Changes have been made to make Rustic Canyon R. C. your weekly destination.

We truly believe that **PARKS MAKE LIFE BETTER**. Our new programs have the focus of community in mind. We are always open to suggestions for upcoming classes and programs that you would like to see. Please send your inquiries to [rusticcanyon.rc@lacity.org](mailto:rusticcanyon.rc@lacity.org).

Here at Rustic Canyon our goal is to **build community through people, parks and programs**. We will see you at the Canyon!

## Mailing Address

601 Latimer Road Santa Monica, CA 90402  
310-454-5734 office 310-575-8015 fax  
[rusticcanyon.rc@lacity.org](mailto:rusticcanyon.rc@lacity.org)  
<https://www.laparks.org/reccenter/rustic-canyon>

## Hours of Operation

SUNDAY

OPEN FOR PERMITS ONLY

MONDAY—THURSDAY

9A.M.—9P.M.

FRIDAY

9A.M.—7P.M.

SATURDAY

9A.M.—5P.M.



**Parking lot gates** will be locked at closing time. All cars must vacate the lot by then. If you **car is locked in**, please contact the Office of Public Safety at 213-978-4670.

## Important Phone Numbers

Council District 11	310-575-8461
Santa Monica Canyon Civic Association	310-454-4448
West Los Angeles LAPD Station	877-ASK-LAPD
LAPD Security Services	213-978-4670
Muni Sports	818-264-5613
Chamber of Commerce	310-459-7963

“Persons with disabilities are welcome to participate in our programs. Reasonable accommodations will be made with prior arrangements.”



# REGISTRATION INFORMATION

CLASSES THAT HAVE NOT MET THE MINIMUM REQUIREMENTS BY: **October 7, 2024** WILL BE CANCELLED.

Registration for all classes will begin online at 9:00am September 9, 2024. We will not accept registration that is mailed in. Registration will continue until October 7th, 2024 or until a class fills. Payment in full may be made by check, Visa, Mastercard, or money order. Cash must be in exact amount. Checks are to be made payable to "L.A. City Department of Recreation and Parks." A collection fee will be charged for returned checks. Class fees will NOT be prorated. By registering, you understand that you are giving your authorization to participate in the Rustic Canyon Recreation Center programs and all activities therein. You further agree to relieve the City of Los Angeles Department of Recreation and Parks, its officers, agents, and employees from any liability for injury to you and your child(ren) resulting from and/or in connection with activities in this program. You do hereby authorize the City of Los Angeles to act as an agent for you and your child(ren) to consent to any x-ray examination, anesthetic, medical or surgical diagnosis, treatment/hospital care which is deemed advisable by, and is to be rendered under the general or special supervision of any physician and/or surgeon licensed under the provision of the Medicine Practice Act and on the medical staff of licensed hospital, whether such diagnosis or treatment is rendered at the office of said physician or at said hospital. This authorization is given in advance of any specific diagnosis/treatment, etc, and is given to provide authority to fore-said agent to give specific consent. By participating in our programs, patrons agree to allow the City of Los Angeles Department of Recreation and Parks and the Rustic Canyon Recreation Center to use photographs, video tapes, and testimonials of participants for use in publicity materials free of any fee or usage charge.

**ONLINE REGISTRATION:** Spaces for any class that does not require instructor approval will be available for online registration on Monday, September 9, 2024 at 9:00am.

Please check our website for more information at <https://www.laparks.org/reccenter/rustic-canyon>.

**CLASS INFORMATION:** Classes will run from Monday, October 7th — Saturday, December 21st, 2024 unless otherwise stated. **WE WILL BE CLOSED ON ALL HOLIDAYS.** Staff reserves the right to cancel or combine classes if minimum enrollment is not met. NO enrollment or transfers will be allowed after Monday, October 7th, 2024. Students must meet the class age requirements by the beginning date of the session. Staff reserves the right to require proof of age at any time. Make-ups will not be scheduled when class is missed by a student. No refunds and/or credits are given for classes missed. Parents will be allowed to attend the first class of each session only, unless otherwise stated.

**REFUND POLICY:** Once the session begins at 9:00am on Monday, October 7th, 2024 no refunds will be issued unless a class is cancelled by Rustic Canyon Recreation Center. Only for special circumstances will a refund be issued minus a non-refundable 15% administration fee which will be assessed by the Rustic Canyon Recreation Center. Changes or transfer per class, sports league, or day camp registration may be assessed additional fees. **NO EXCEPTIONS.**

Please allow 6 –8 weeks for processing refunds.

## REGISTER FOR CLASSES BEFORE THE SESSION BEGINS!!!

Nothing will cancel a good class faster than waiting until the last minute to register. If a class doesn't meet its minimum number of students by the start of a class session it runs the risk of being cancelled before it begins.

## Rustic Canyon Recreation center is GOING GREEN!

We are no longer mailing brochures. Please find extra copies on our website: <https://www.laparks.org/reccenter/rustic-canyon>

## FALL 2024

Fall Class Online Registration.....September 9th, 2024

Fall Classes Begin.....October 7th, 2024

**Center CLOSED**.....October 14th, 2024

**Center CLOSED**.....November 11th, 2024

**Center CLOSED**.....November 28, 2024

**Center CLOSED**.....November 29th, 2024

Fall Classes End.....December 21, 2024



## **REFUND POLICY:**

Once the session begins at 9:00am on Monday, October 7, 2024 no refunds will be issued unless a class is cancelled by Rustic Canyon Recreation Center.

Only for special circumstances approved by the Facility Director will a refund be issued minus a non-refundable 15% administration fee which will be assessed by the Rustic Canyon Recreation Center.

Changes or transfer per class, sports league, or day camp registration may be assessed additional fees.

We do not allow “testing” of classes prior to registering for them. You must be registered for a class in order to attend.

Please allow 6 –8 weeks for processing refunds as there is only one department managing them all and hundreds of city parks who send in requests.



### **DID YOU KNOW...**

There is an LA City App for iPhones and Androids to help make registering for classes and finding information for the various City of Los Angeles Recreation Facilities easier.

iPhone: <https://apps.apple.com/lc/app/la-parks/id1561854950>

Android: [https://play.google.com/store/apps/details?id=com.rap.mobile&hl=en\\_US&gl=US](https://play.google.com/store/apps/details?id=com.rap.mobile&hl=en_US&gl=US)

*We at Rustic Canyon appreciate that this gem of a park is your home away from home. Please work with us to keep our environment clean and beautiful. To our class participants: please make sure to clean up after yourselves, and if you utilize our kitchen please clean up, especially if you use our microwave. Expect to see lots of little changes that we can all enjoy together.*

*Thank you in advance!  
Live Rustic! Play Rustic!*

## How to Create a WebTrac Profile:

- Step #1: Visit [reg.laparks.org](http://reg.laparks.org)
- Step #2: Click on “Create An Account.” This will open a new window.
- Step #3: Fill in all required areas with **your** information.
- Step #4: Click “Add New Member” at the bottom of the page if you wish to add someone to your account and fill out the required areas.
- Step #5: If you would like to add an emergency contact, click on “Add New Contact.”
- Step #6: When you are done, click “Save” at the bottom of the page. You will automatically be logged in and redirected to the main registration page.



## How to Register for a Class:

- Step #1: Once logged in, you will then select the person(s) you are trying to register.
- Step #2: Select the item(s) you want to pay and add them to cart.
- Step #3: Follow the payment instructions to complete the transaction.

## How to Complete a Permit Payment:

- Step #1: Visit [reg.laparks.org](http://reg.laparks.org)
- Step #2: Click on “My Account.”
- Step #3: Select “Pay Old Balances” on the drop down.
- Step #4: Select the item(s) you want to pay and add them to cart.
- Step #5: Follow the payment instructions to complete the transaction.

Please email us at [rusticcanyon.rc@lacity.org](mailto:rusticcanyon.rc@lacity.org) or call us at 310-454-5734 if you need further assistance with registration, creating a profile, or completing payment.

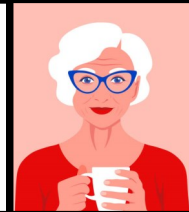
Want to stay in the loop of the goings on at  
**Rustic Canyon Recreation Center?**  
Join our emailing list today!  
E-mail us at [rusticcanyon.rc@lacity.org](mailto:rusticcanyon.rc@lacity.org)!



# MEET OUR INSTRUCTORS

Penny Perez, Jewelry Instructor

Learn some of the basic jewelry making techniques, as well as the tools required to do so. We will be exploring, sawing, filing, sanding, and cold connections early in the course, and will then get into soldering. A pendant and pair of earrings will be completed before the course is over using some of the combined learned techniques and processes. We will also explore how to put texture and color on metal.



Anne Sweel, Mature Fitness

**Beloved Ann Swell has been teaching Mature Fitness to youthful seniors for over a decade. She teaches all skill levels. If you are recovering from surgery, out of shape or even in a wheelchair this is the class for you. She is kind, passionate, patient and teaches a class that is hailed "perfection" by her students.**



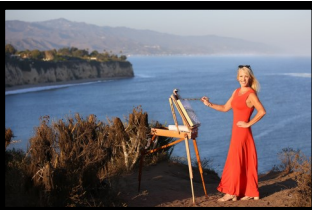
Cassandra Austin, Ceramics

Cassandra Austin was born in Australia, and has been a criminologist and a novelist - but now she is enthralled with ceramics. Interested in both form and surface design, she focuses on altering wheel-thrown pieces, or hand-building unusual shapes. One of the things she most hopes to achieve with students is helping them find their unique voice in clay.



Lori Mills, Mixed Media Art

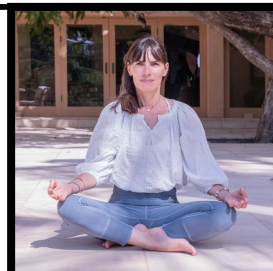
Lori is a professional artist (oil painter) and owns an art gallery - Malibu Contemporary - located at the Four Seasons Westlake Village where she represents 15 artists besides herself. Lori has a B.S. from UCLA, a BFA from the San Francisco Art Institute, and an MBA from USD. Lori lives in Malibu and her passion is all things art!!



Kim Harrington, Yoga Instructor

Kim is a Yoga Alliance certified Yoga instructor who delivers very nurturing and accessible Yoga classes. Her classes have a meditative tone to them, combining an equal awareness of the breath, the physical body and relaxation.

Kim has worked with teens for years, she loves how open they are to learning not only the physical postures, but also the philosophy and all areas of self care.



Carmen Recker, Ballet

Carmen Recker grew up in Mesa, Arizona. She met her husband while studying Communication Arts at Loyola Marymount University. They have one son who just started college, training to become a pilot. Ms. Carmen did her graduate work in Theater at Arizona State University where she also toured with Childsplay, a nationally recognized theater company for Young Audiences. She is a classically trained singer and has spent many years working in Opera Education with Los Angeles Opera, in addition to conducting dance classes for the City of Los Angeles Department of Recreation and Parks. Ms. Carmen loves working with young students, inspiring them with the magic of storytelling through dance and theater arts.




Elliot Barden, T'ai Chi Instructor

Elliot is a 40-year student of two acclaimed T'ai Chi masters, the grandson and great-grandson of Tung Ying Chieh, one of the greatest Yang-style masters of all time. The lineage can be traced back 500 years. We are honored to have him with us.

Elliot has volunteered selflessly at our center for the past 16 years. No matter the class size, everyone receives personalized individual instruction from him. Newcomers to T'ai Chi are especially welcome.





**Gym will be closed....**

**Gym**  
**Floor Refurbishment**  
**Monday, November 11th-**  
**Saturday, November 30th**

**Rustic Canyon Closed for Public Holidays**  
**Monday, October 14th**  
**Monday, November 11th**  
**Thursday, November 28th**  
**Friday, November 29th**





# ADULT CLASSES

*October 7th—December 21st, 2024*

*No Classes on Monday, October 14, Monday November 11th, Thursday November 28th & Friday, November 29th*

## T'ai Chi

Ancient Chinese low impact exercise for health, strength, and an overall sense of well-being. Has been shown to reduce stress, relieve pain, lower blood pressure, and promote restful sleep. Regular practice makes the body agile and graceful, the mind alert and serene. Beginners are especially welcome. You can start at any time.

**Instructor:** E. Barden

**Location:** Outdoors-See office for location

	<b>Ages:</b>	<b>Day:</b>	<b>Time:</b>	<b>Fee:</b>
<b>T'ai Chi I</b>	18+	Tuesdays	10:30am – 11:30pm	\$20 Registration Fee

## Mature Fitness

A fresh form of low impact cardio exercise for those who are 50+. A great way to stay fit and healthy.

**Instructor:** A. Sweel

**Location:** Gym

<b>Ages:</b>	<b>Day:</b>	<b>Time:</b>	<b>Fee:</b>
50+	Mondays & Wednesdays	9:30am-10:45am	\$60/6 weeks

*No Classes Monday, October 14th and Monday, November 11th*

## Yoga

### Senior Yoga

Discover the benefits of senior yoga. Increase mobility, relieve stress, improve balance and build community. The class is suitable for all abilities. It is also possible to do this class in a chair.

**Instructor:** K. Harrington

**Location:** Gallery

**Ages:** 50+

<b>Day:</b>	<b>Time:</b>	<b>Fee:</b>
Tuesdays	11:00am – 12:00pm	\$220/ 11 weeks

### Lunchtime Yoga

Increase energy and decrease stress-give yourself a mid-day boost, take a break away from the desk and work on posture, flexibility and connect with community.

**Instructor:** K. Harrington

**Location:** Gallery

**Ages:** 50+

<b>Day:</b>	<b>Time:</b>	<b>Fee:</b>
Tuesdays	12:00pm – 1:00pm	\$220/11 weeks

## 50+ Basketball\*

Basketball pick-up play for those over 50. Registration forms must be completed and on file for all participants. Each participant must sign-in for each session.

**Instructor:** None

**Location:** Gym

<b>Ages:</b>	<b>Day:</b>	<b>Time:</b>	<b>Fee:</b>
50+	Wednesday	6:00pm-7:30pm	\$50 Registration Fee/ 8 weeks
50+	Saturday	9:30am-10:30am	\$50 Registration Fee/ 8weeks

**\*The gym will be closed Monday, November 11th through Saturday, November 30th for Refurbishment**

# ADULT ART CLASSES

*October 7-December 21*

**\*\*\*\*Maximum 10 participants for each class\*\*\*\***

*No Classes on Monday, October 14, Monday November 11th, Thursday November 28th & Friday, November 29th*

## CERAMICS

Clay is an earthy material of fine grained minerals with traces of metal oxides and organic matter that is used to create pottery and many other useful and beautiful items. Working with clay is fun, challenging, meditative, and messy! It is recommended that you wear clothing that can get stained and dirty and/or that you bring an apron. Students must purchase their own clay.

This studio has a limited firing capacity and cannot accommodate production potters or pieces over 12 inches. Each student will be given a set maximum number of fired finished pieces and will be charged a fee for additional firing (provided there is available kiln space).

### Advanced Ceramics

Participants with *at least 3 session of beginners classes* at Rustic Canyon R. C. or beginner sessions at another studio may take this class. Casandra Austin will instruct class members with hand building or wheel throwing techniques, tips, and projects. Clay must be purchased and brought to class. (*cone 5 or cone 6 clay, NOT 05 or 06*)

**\*\*List of materials will be provided by instructor at the first day of class.\*\***

**Instructor:** C. Austin

**Location:** Ceramics Room

**Ages:** 18+

<b>Day:</b>	<b>Time:</b>	<b>Fee:</b>
Wednesdays	10:00am – 1:00pm	\$220 / 11 weeks
Wednesdays	2:00pm – 5:00pm	\$220/ 11 weeks
Thursdays	10:00am – 1:00pm	\$200/ 10 weeks
Thursdays	2:00pm – 5:00pm	\$200 / 10 weeks

**Instructor:** L. Mills

**Location:** Ceramics Room

**Ages:** 18+

<b>Day:</b>	<b>Time:</b>	<b>Fee:</b>
Mondays	9:30am – 12:30pm	\$180 / 9 weeks
Mondays	5:00pm – 8:00pm	\$180 / 9 weeks

### Beginning Ceramics

**Instructor:** L. Mills

**Location:** Ceramics Room

**Ages:** 18+

<b>Day:</b>	<b>Time:</b>	<b>Fee:</b>
Mondays	1:00pm – 4:00pm	\$180 / 9 weeks

# ADULT ART CLASSES

*October 7-December 21*

**\*\*\*\*Maximum 10 participants for each class\*\*\*\***

*No Classes on Monday, October 14, Monday November 11th, Thursday November 28th & Friday, November 29th*

## Beginning/Advanced Jewelry Fabrication

*For Beginners:* Learn the basics of jewelry fabrication such as cutting sheet metal, using jeweler's saw, soldering metal together using a torch, and polishing the final product. Setting cabochons in hand-made bezels will also be introduced. Make a cuff bracelet or pendant to begin.

*For Advanced:* Continue to improve basic skills while exploring design ideas, including textures, stamping, shaping, and reticulating metal with fire. Try your hand at making small boxes, beads, small picture frames, and/or small serving/baby spoons.

**\*\*List of materials will be provided by instructor at the first day of class.\*\***

**Instructor:** P. Perez

**Location:** Arts & Crafts Room

**Ages:** 18+

**Day:**

Wednesday

**Time:**

10:00am – 2:00pm

**Fee:**

\$220/ 11 classes

## HOW YOU CAN HELP:

L.A . Parks  
Foundation

Have you ever felt the desire to help the park? Experienced its beauty, the events hosted by the facility, or walked through the eucalyptus grove and wanted to contribute to its up keeping and restoration efforts?

Scan the QR code to make a donation at the [laparksfound.org](http://laparksfound.org) under "Friends of the Park," volunteer your time at one of the events we host throughout the year, send us an email about what you think about our facility and what can help the community because what YOU think matters, and/or participate in our programs listed in this brochure.



## FOLLOW US ON SOCIAL MEDIA!

FACEBOOK: /RUSTICCANYONRECREATIONCENTER

INSTAGRAM: @RUSTICCANYONRECCENTER

TWITTER: @RUSTICCANYONREC

# YOUTH TENNIS

*October 7th—December 21st, 2024*

*No Classes on Monday, October 14, Monday November 11th, Thursday November 28th & Friday, November 29th*

Program is listed by instructor. Each student must bring a new can of tennis balls to the first class. Classes must have a minimum of 5 students enrolled or they will be canceled.

## Pee Wee Class:

This class will be introducing the fundamentals of tennis. We will be teaching the kids how to hold the rackets correctly, how to be in every position, and teaching how to use correct form. During all of the instruction the kids will be learning tennis through fun and games and will be able to distinguish forehands, backhands, volleys, and overheads. Evaluations by instructor required to determine skill level. Bring a new can of tennis balls on the first day of class.

**Instructor:** S. Jansing

**Location:** Tennis Court

<b>Ages:</b> 6-9 years	<b>Day:</b> Saturdays	<b>Time:</b> 9:30am – 10:30am	<b>Fee:</b> \$275/ 11 weeks
---------------------------	--------------------------	----------------------------------	--------------------------------

## Main Draw:

Beginner/Intermediate. This class will be geared toward a slightly older group of children and will be focused on teaching proper technique. While learning the basics of tennis, they will also be learning how to keep score, serve, and play for actual points. *There will be a great amount of fun and games while at the same time forehand, backhand, serve, volleys, and overhead drills.* Evaluations by instructor required to determine skill level. Bring a new can of tennis balls on the first day of class.

**Instructor:** S. Jansing

**Location:** Tennis Court

<b>Ages:</b> 10-13 years	<b>Day:</b> Saturdays	<b>Time:</b> 10:30am – 11:30am	<b>Fee:</b> \$275/ 11 weeks
-----------------------------	--------------------------	-----------------------------------	--------------------------------



Rustic Canyon Tennis Program  
Where You Can Develop **Skill**,  
**Consistency** and **Technique**  
With Amazing Pros  
**REGISTER NOW!**

**“Achieving gender equity through a continuous commitment to girls and women in sports.”**

**Good Sportsmanship is Everyone’s Responsibility. Be a Good Sport.**

**\*All tennis classes require a minimum of 5 students.**

Rustic Canyon Recreation Center **reserves** the right to cancel or combine if minimum is *not met*.



# ADULT TENNIS

*October 7th-December 21, 2024*

*No Classes on Monday, October 14, Monday November 11th, Thursday November 28th & Friday, November 29th*

**\*\*\*Maximum 10 participants for each class\*\*\***

Program is listed by instructor . Each student must bring a new can of tennis balls to the first class. Classes must have a minimum of 5 students enrolled or they will be canceled.

## Advanced Adult Tennis Workout:

The adult clinic will be a fast-paced clinic with doubles oriented drills that work on ground strokes, volleys, and overheads. We will be focusing on aggressive tennis through point play while working on serves and returns as well. **Bring a new can of tennis balls on the first day** of class.

**Instructor:** P. Rouhafza & S. Jansing

**Location:** Tennis Court

<b>Ages:</b>	<b>Day:</b>	<b>Time:</b>	<b>Fee:</b>
18+	Tuesdays	9:00am – 10:30am	\$275/ 11 weeks
18+	Saturdays	9:30am – 11:00am	\$275/ 11 weeks

## Private Individual Tennis Lessons

We offer private tennis classes for ages 5+. E-mail us at [rusticcanyon.rc@lacity.org](mailto:rusticcanyon.rc@lacity.org) for more information. Please include your name, phone number, and availability.

**Fee:** \$900 for ten one hour classes

**Fee:** \$450 for ten half hour classes

## Private Group Tennis Lessons

We offer private group tennis classes for ages 5+. E-mail us at [rusticcanyon.rc@lacity.org](mailto:rusticcanyon.rc@lacity.org) for more information. Please include your name, phone number, and availability.

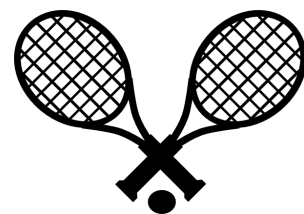
**Fee:** \$250 per person for ten one hour classes



*\*All tennis classes require a minimum of 5 students.*

*Rustic Canyon Recreation Center reserves the right to cancel or combine if minimum is not met.*

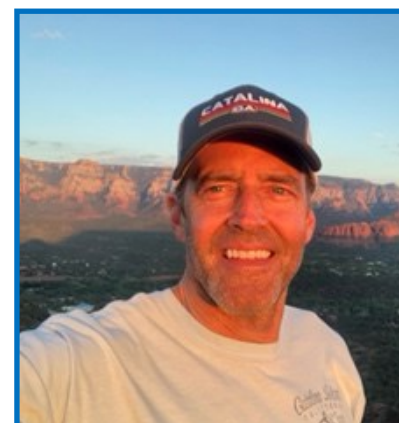
# MEET OUR TENNIS PROS



Ped Rouhafza was one our pros who restarted the Rustic Canyon tennis programs in 2010 and has been a part of Rustic Canyon Recreation Center ever since. Prior to becoming one of our pro's, Ped was a pro at the Riviera Country Club for eight years. He coaches all ages and all levels and enjoys every minute of it. Prior to teaching tennis, Ped played NCAA Division 1 Tennis and was a nationally ranked player. He has extensive experience and knowledge of the game and loves passing that passion onto those who want to learn the beautiful game of tennis.



Scott Jansing , originally from Nashville played tennis for and graduated from Auburn University in Alabama. He then went on to teach at various clubs in the Miami and Boca Raton area for over 20 years before coming to Los Angeles 5 years ago. Scott has extensive experience with adult lessons as well as kids group classes . He teaches our Saturday morning kids classes and an adult group class on Tuesday mornings as well as many private classes during the week. Stop by the courts and say hello!



Giancarlo "GC" Cava has been coaching tennis since 2001 all around West LA, is a USPTA Certified Teaching Professional since 2001, was a Staff Pro at Riviera Country Club from 2006-2018, an Assistant Coach for UCLA Women's Tennis from 2014-2021, and is excited to be working with Rustic Canyon Rec Center and it's patrons!

# What can I get a permit for at Rustic Canyon Recreation Center?

- Picnic Area #1 (12 tables, 3 coal BBQ pits, accommodates up to 100 people max)
- Picnic Area #2 (6 tables, accommodates up to 50 people max)
- Picnic Area #3 (8 tables, 1 coal BBQ pit, accommodates up to 50 people max)
- Field
- Outdoor Basketball Court
- Tennis Courts (1, 2, & 3 only)
- Gallery (Meeting Room)
- Indoor Basketball Court



## Why are there no prices?

*-Because fees vary based on what you need.*

## How early do I need to submit an application?

*-At least three weeks to a month out from the desired permit date.*

## Are there any restrictions?

*-Yes. Some of the basic restrictions for all permits are no alcohol, no smoking, no bounce houses, no amplified sound, no open flames on the BBQ pits, no tabletop grills, and no dogs off leash.*

## Am I allowed to hire an outside vendor for my party?

*-Yes, we have to approve the vendor, and they need to have their insurance uploaded to [kwikcomply.org](http://kwikcomply.org).*

For more information, email us at [rusticcanyon.rc@lacity.org](mailto:rusticcanyon.rc@lacity.org).



# Rustic Canyon Permit Information & Process

For information on availability please call Rustic Canyon RC at (310) 454-5734 or e-mail us at [rusticcanyon.rc@lacity.org](mailto:rusticcanyon.rc@lacity.org). Permit Applications are available online at <https://www.laparks.org/recenter/rustic-canyon>.

## **PICNIC PERMITS**

There are three (3) picnic areas available. We have two picnic areas that hold up to 50 people in each area as well as one that accommodates up to 100. Reservations are required for any of the picnic areas. **Groups are considered 10 people or more.** If you wish to reserve a picnic area, please submit a permit application a minimum of 21 business days in advance. For more information on Sunday Picnics, please contact the office for availability.

## **BASEBALL FIELD & ATHLETIC FIELD**

We have one small baseball diamond available for rental. Due to the size of the field, we will not be able to accommodate adult softball or baseball leagues. Permits are not issued for soccer with the exception of pee wee soccer. Any organized or team sports activity will require an official City Permit and insurance including organized pick-up games. All insurance must be registered at [Track4LA.lacity.org](http://Track4LA.lacity.org) If you wish to reserve the field, please submit a permit application a minimum of 14 business days in advance. **PRIVATE INSTRUCTION IS NOT ALLOWED.**

## **OUTDOOR BASKETBALL COURT**

We have one outdoor basketball for rental. Any organized league games, private instruction or clinics or use for parties, will require an official City Permit and insurance. All insurance must be registered at [Track4LA.lacity.org](http://Track4LA.lacity.org) If you wish to reserve the court, please submit a permit application a minimum of 14 business days in advance. **PRIVATE INSTRUCTION IS NOT ALLOWED.**

## **TENNIS COURTS**

Tennis courts are available on a first come-first serve basis when not under an official City permit or class programming. **PRIVATE INSTRUCTION IS NOT ALLOWED.**





# Park Advisory Board News

The Park Advisory Board has undertaken a major campaign to completely transform and modernize the Rustic Canyon Recreation Center .



The Park Advisory Board is currently working on renovating various aspects of the facility.

Although it will take time, you will see improvements to the facility soon.

If you are interested in donating to help the following list of projects, please refer to the bottom of the page.

## Facility Director's "Wishlist":

- Refurbish Lower Park Restrooms
- New Playground Equipment
- Repaving of the Parking Lot



## WHERE TO SEND YOUR DONATIONS:

Donations for our current projects can be sent to :



**LA PARKS FOUNDATION**  
2650 N. Commonwealth Avenue  
Los Angeles, California 90027  
[www.laparksfoundation.com](http://www.laparksfoundation.com)



Donation for the **Grove Project** can be sent to:  
**Santa Monica Canyon Civic Association**

P.O. Box 3441  
Santa Monica, CA 90408-3441  
[www.smcca.org](http://www.smcca.org)

Rustic Canyon is working with the **Los Angeles Parks Foundation** and **Santa Monica Canyon Civic Association**, both a 501(c)3 public benefit charity. All contributions will be greatly appreciated.

# Community Meetings

## **Rustic Canyon Park Advisory Board**

Meetings held the 3rd Tuesday each month,  
at 6:30 pm in the Gallery.

For more Information visit [laparks.org](http://laparks.org)



## **Santa Monica Canyon Civic Association**

Meetings held the 2nd Tuesday each month,  
virtually via Zoom.

For more Information visit [smcca.org](http://smcca.org)

## **West LA Community Police Advisory Board**

Meetings held the 4th Tuesday each month,  
West LA Police Station

1663 Butler Ave Los Angeles, CA 90025

[lapdonline.org/west\\_la\\_community\\_police\\_station](http://lapdonline.org/west_la_community_police_station)



**Parks  
Make  
Life  
Better!**<sup>SM</sup>

*Building Community  
Through,  
People, Parks, and Programs*



City of Los Angeles - Department of Recreation and Parks

RUSTIC CANYON RECREATION CENTER  
601 Latimer Road Santa Monica, CA 90402

office: (310) 454-5734 fax: (310) 575-8015 e-mail: rusticcanyon.rc@lacity.org



## Private Tennis Class Registration Form

Adult's Last Name \_\_\_\_\_ Adult's First Name \_\_\_\_\_

Address \_\_\_\_\_ City \_\_\_\_\_ Zip \_\_\_\_\_

Home( ) \_\_\_\_\_ Cell( ) \_\_\_\_\_ Work( ) \_\_\_\_\_

E-mail \_\_\_\_\_

Emergency Contact Name \_\_\_\_\_

Home ( ) \_\_\_\_\_ Cell ( ) \_\_\_\_\_ Work ( ) \_\_\_\_\_

### Individual Consent Form

I, the undersigned, give permission for \_\_\_\_\_, to participate in the Rustic Canyon Rec Center programs. I understand the nature of the activities and I / minor's experience and capabilities and believe myself / minor to be qualified, in good health, and in proper physical condition to participate in such activity. I agree to relieve the City of L. A. Dept. of Rec & Parks, its officers, agents and employees from any liability in connection with any injury to myself or my child in connection with this activity. I understand the Recreation Facility CARRIES NO INSURANCE. I do authorize Rustic Canyon Recreation Center as an agent for myself / child listed above to consent to X-ray examination, anesthetic, medical or surgical diagnosis or treatment and hospital care which is deemed advisable by, and is rendered under the general or specialized supervision of any physician licensed under the provisions of the Medical Practice Act on the staff of a licensed hospital, whether such diagnosis or treatment is rendered at the office of said physician or a said hospital. It is understood that this authorization is given in advance of any such diagnosis, treatment or hospital care which the aforementioned physician in the exercise of the judgment may deem advisable. The authorization shall remain effective for the duration of the program, unless revoked sooner in writing and delivered to said agent. I also understand that my signature is consent for every session that I check off and sign up for.

### PHOTO CONSENT

The City of Los Angeles Department of Recreation and Parks or its assigned agents has my permission to use images (digital, film, tape, or video) of myself/or my child \_\_\_\_\_ for promotion of Rustic Canyon Recreation Center Program . (please initial) \_\_\_\_\_ YES \_\_\_\_\_ NO

Please Print Clearly and Fill Out This Form Completely

Name of Instructor	Day	Time	Fee	Weeks	Participant's Name	DOB	Sex

Make a check or money order payable to: "L.A. City Recreation and Parks."

Credit Cards Accepted:



### Refund Policy For Classes

- All refunds are subject to a 15% administration fee.
- A refund request form must be filled out in person at the main office.
- There will be no prorating of classes before the second week.
- Credits, refunds or make-ups will not be given for classes missed by students.
- Refunds will not be approved after the first week of class.

### Private Tennis Class Policy

- Classes are offered only if the instructor and court is available
- Classes nor make ups are available on Sundays or Holidays.
- Absolutely no instruction when the Recreation Office is Closed
- Participant must register prior to the start of their session. Sessions consist of 10 week increments

I have read the consent form and understand the refund policy.

Signature \_\_\_\_\_ Date \_\_\_\_\_



City of Los Angeles - Department of Recreation and Parks  
 RUSTIC CANYON RECREATION CENTER  
 601 Latimer Road Santa Monica, CA 90402  
 office: (310) 454-5734 fax: (310) 575-8015 e-mail: rusticcanyon.rc@lacity.org



## Rustic Canyon RC Class Registration Form

Adult's Last Name \_\_\_\_\_ Adult's First Name \_\_\_\_\_  
 Address \_\_\_\_\_ City \_\_\_\_\_ Zip \_\_\_\_\_  
 Home( ) \_\_\_\_\_ Cell( ) \_\_\_\_\_ Work( ) \_\_\_\_\_  
 E-mail \_\_\_\_\_

**Please Add Me To The Rustic Canyon Recreation Center Official E-Mail List**    Yes    No

Emergency Contact Name \_\_\_\_\_  
 Home ( ) \_\_\_\_\_ Cell ( ) \_\_\_\_\_ Work ( ) \_\_\_\_\_

Class #	Name of Class	Fee	Participant's Name	DOB	Sex

**CLASS SESSION:**   Summer 2023 \_\_\_   Fall 2023 \_\_\_   Winter 2024 \_\_\_   Spring 2024 \_\_\_

Credit Cards Accepted:      

**\*\*\*PLEASE REMEMBER TO SIGN CONSENT FORM ON THE BACK.\*\*\***

Office Use Only

SUMMER Receipt #: \_\_\_\_\_ Payment type: \_\_\_\_\_ Processed by: \_\_\_\_\_  
 FALL Receipt #: \_\_\_\_\_ Payment type: \_\_\_\_\_ Processed by: \_\_\_\_\_  
 WINTER Receipt #: \_\_\_\_\_ Payment type: \_\_\_\_\_ Processed by: \_\_\_\_\_  
 SPRING Receipt #: \_\_\_\_\_ Payment type: \_\_\_\_\_ Processed by: \_\_\_\_\_





# **CITY OF LOS ANGELES**



Mayor - Karen Bass

Council District 11: Councilmember – Traci Park

## **DEPARTMENT OF RECREATION AND PARKS**

### **BOARD OF RECREATION AND PARKS COMMISSIONERS**

Renata Simril	President
Luis Sanchez	Vice President
Fiona Huton	Member
Marie Lloyd	Member
Benny Tran	Member

### **RECREATION AND PARKS ADMINISTRATION**

Jimmy Kim	General Manager
Matthew Rudnick	Executive Officer & Chief of Staff
Chinyere Stonehand	Assistant General Manager—Recreation Services Branch

### **WEST REGION ADMINISTRATION**

Sonya Young Jimenez	Superintendent
Ramon Cerrillos	Principal Recreation Supervisor II
Juan Soto	Principal Recreation Supervisor I, Citywide Adaptive Sports, Girls Play LA/Gender Equity
Kortley Norris	Coastal District Supervisor

### **RUSTIC CANYON RECREATION CENTER**

Paige Barnes– Senior Recreation Director

### **RECREATION ASSISTANTS AND INSTRUCTORS**

**Cassandra Austin, Faith Barnes, Katie Garcia, Kim Harrington, Chad Hayes  
Scott Jansing, Greg Martin, Kirkette Martin, Lori Mills, Yana Mendoza,  
Penny Perez, Carmen Recker, Ped Rouhafza, Anne Sweel, Talia Tinari**

### **MAINTENANCE**

**ANDRE BRANCH, SENIOR PARK MAINTENANCE SUPERVISOR  
ROBERT BUENROSTRO, SENIOR GARDENER**

### **FOLLOW US ON THE WEB AT:**

Website: <https://www.laparks.org/reccenter/rustic-canyon>

Facebook: <https://www.facebook.com/RusticCanyonRecreationCenter/>

Instagram: <https://www.instagram.com/rusticcanyonreccenter/>

Twitter: <https://twitter.com/rusticcanyonrec>