

CITY OF LOS ANGELES DEPARTMENT OF RECREATION AND PARKS

**ROBERTSON**

**(310) 278-5383**

**RECREATION CENTER**

1641 Preuss Rd., LA, CA 90035

Robertson.RecreationCenter@LACity.org

LAParks.org/RecCenter/Robertson



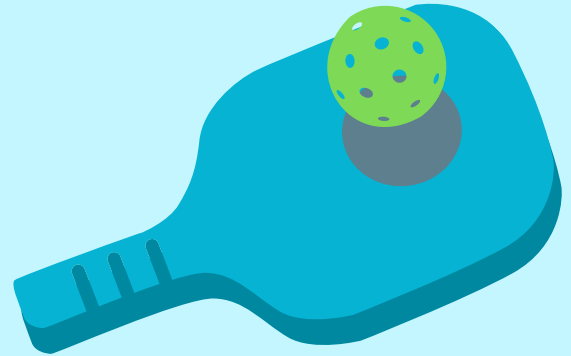
# Adult Pickleball

**\$10**

PER MONTH

Winter-Spring 2025

**OPEN PLAY**



## WEDNESDAYS

Enjoy some INDOOR PICKLEBALL! ALL LEVELS WELCOME!

Must abide by all Pickleball Code of Conduct Guidelines, Gym Rules,  
& be in Good Standing with all Parks Staff, Volunteers, & Participants.

**BEGINNERS & INTERMEDIATE**

**10:00 AM - 11:30 AM**

**ADVANCED: 11:30 AM - 1:00 PM**

All programs are subject to change or cancellation at any time without prior notice.  
Persons with disabilities are welcomed to participate in our classes and programs.  
Reasonable accommodations will be made with prior arrangements.

CITY OF LOS ANGELES DEPARTMENT OF RECREATION AND PARKS

**ROBERTSON**

**RECREATION CENTER**

1641 Preuss Rd., LA, CA 90035

**(310) 278-5383**

Robertson.RecreationCenter@LACity.org

LAParks.org/RecCenter/Robertson



# Adult Pickleball

## OPEN PLAY

### WE PROVIDE

- Indoor Gym Space
- 2 Freshly painted pickleball court lines
- 1-2 nets set up by Staff

### B.Y.O. (Bring Yours Own)

- Paddles
- Balls
- Take down & storage of nets
- Please NO TAPE on our newly painted gym floors

**Interested in Evening Pickleball (indoor or outdoor)?**

**Sign the Interest List!**