



**PENMAR
REC**



**BLAST OFF TO ADVENTURES AT
PENMAR REC CENTER!**

W I N T E R 2 0 2 5



1341 LAKE ST. VENICE, CA 90291

PHONE: (310) 396-8735

EMAIL: PENMAR.RECREATIONCENTER@LACITY.ORG



GENERAL INFORMATION



Facility Director Dylan Thomas
Recreation Coordinator Justin Weddle

HOURS OF OPERATION

Monday-Friday 9am-9pm
Saturday 9am-5pm
Sunday Closed

FACILITY PHONE NUMBERS

Main Office (310) 396-8735
Multi Purpose Office (310) 314-1815

TENNIS COURTS

You may reserve a tennis court 15 minutes before every hour for that hour. Please check in at the office prior to playing to reserve your spot!
PRIVATE LESSONS ARE NOT ALLOWED WITHOUT A PERMIT

PERMIT RESERVATION

Call the Municipal Sports Office between the hours of 8am-2pm for any field reservation starting after 7pm and all day Sunday or you may email pacific.munisports@lacity.org

IMPORTANT PHONE NUMBERS

Council Office 11 (310)575-8461
West Region Office (310)202-2803
Muni Sports Office (818)756-0284
Venice Pool (310)575-8260
Penmar Golf Course (310)396-6228



REGISTRATION AND REFUND INFORMATION

REGISTRATION FOR ALL PROGRAMS

All programs must be paid for in full prior to the first meeting. Enrollment may be completed in the Main Office or online at www.laparks.org/reccenter/penmar. We accept VISA or MASTERCARD only. Credit Cards must be present in person.

WINTER 2025 REGISTRATION DATE

Sports Leagues:
Nov 4th

Classes: Dec 2nd

PROGRAM INFORMATION

- All classes are on a first come, first serve basis
- Participants must have reached minimum age for classes by the first day of class
- There will be no classes on holidays observed by the City of Los Angeles and any classes canceled by the center will be made up at the end of the session.
- Classes will not be made up if the student is absent; including illness.

PAYMENT PROCESS

- Full payment for all programs and leagues is due at the time of registration
- Methods of payment accepted: Cash, Debit & Credit Card



REFUND POLICY

Full refund will only be granted if a program is canceled by the center.

A 15% administration fee will be assessed for all refund requests. No refunds will be issued after the start of a program. All refund requests must be made between 10am-5pm, Mon through Fri. Expect 6-8 weeks to process all refunds.



“Achieving gender equity through continuous commitment to girls and women in sports”

GPLA

Persons with disabilities are welcome to participate in our programs. Reasonable accommodations will be made with prior arrangements. Please be aware that some accommodations may take 30 days or longer. Please submit your request for accommodations as soon as possible.

PLAY LA

Play LA Youth and Adaptive Youth Sports Program is made possible by the LA28 Olympic and Paralympic Games. Waiver available for those who qualify, ask for details.

For Permit Use Only: Please make checks payable to City of Los Angeles.
A collection fee will be charged for each check bounced



PENMAR REC. CENTER



ANNUAL SPORTS CALENDAR

SEASON	REG. OPEN DATE	EVAL DAY	FIRST GAME
WINTER 2025	NOV 4TH	WEEK OF DEC 2ND	JAN 4TH
SPRING 2025	FEB 3RD	WEEK OF MARCH 10TH	APRIL 5TH
SUMMER 2025	MAY 5TH	WEEK OF JUNE 9TH	JULY 12TH
FALL 2025	AUG 4TH	WEEK OF SEPT 8TH	OCT 4TH

****All information on this flyer is subject to change or cancellation****
 Persons with disabilities are welcome to participate in our programs.
 Reasonable accommodations will be made with prior arrangement.
 Please be aware that some accommodations may take 30 days or longer.
 Please submit your request for an accommodation as soon as possible.
 "Achieving gender equity through a continuous commitment to girls and women in sports"



PENMAR REC. CENTER WINTER 2025 ACTIVITIES AT-A-GLANCE



CLASS/PROGRAM	FEE PER PATRON	AGES	DAYS	TIME	REGISTRATION DATE	STARTING DATE
TINY TOTS ENRICHMENT	\$275 MONTHLY	2.5-5	M-TH	9AM-12PM	OPEN ENROLLMENT	ON GOING
AFTER SCHOOL CLUB	\$240 MONTHLY	4-11	M-F	VARIES	OPEN ENROLLMENT	ON GOING
WINTER CAMP 2025	\$165-\$185 WEEKLY	4-12	M-F	VARIES	DEC 2	DEC 16
CO-REC BASKETBALL LEAGUE	\$180	3-15	VARIES	VARIES	NOV 4	WEEKEND OF JAN 4
GPLA BASKETBALL LEAGUE	\$180	8-15	VARIES	VARIES	NOV 4	WEEKEND OF JAN 4
TRACK & FIELD	\$80	5-15	WED	4PM-5:45PM	DEC 2	WEEK OF JAN 6
CHEER & DANCE DRILLS	\$80	8-12	FRI	5:15PM-6PM	DEC 2	WEEK OF JAN 6
TINY TWIRLERS	\$80	4-6	MON	4:15PM-5PM	DEC 2	WEEK OF JAN 6
SOCCER SKILLS	\$80	3-10	SAT	8:30AM-12PM	DEC 2	WEEK OF JAN 6
BASEBALL SKILLS	\$80	5-10	SAT	9AM-12PM	DEC 2	WEEK OF JAN 6
VOLLEYBALL SKILLS	\$80	8-14	MON	4PM-7PM	DEC 2	WEEK OF JAN 6
PICKLEBALL SKILLS	\$80	8-11	VARIES	4PM-5PM	DEC 2	WEEK OF JAN 6
HOOP DREAMS ACADEMY	\$80	12-15	MON	4:30PM-6:45PM	DEC 2	WEEK OF JAN 6
ADULT ART	\$60 MONTHLY	18+	TUE	6PM-9PM	OPEN ENROLLMENT	ON GOING
FOLKLORICO	\$60	7-15	SAT	12PM-1:30PM	DEC 2	WEEK OF JAN 6

WINTER 2025 REGISTRATION DATE

**SPORTS LEAGUES:
NOV 4TH
CLASSES: DEC 2ND**



City of Los Angeles Department of Recreation and Parks
Penmar Recreation Center
 1341 Lake St. Venice, CA 90291
 Office: (310) 396-8735
 Email: penmar.recreationcenter@lacity.org

**CAMP PENMAR
WINTER CAMP**

"Blast off into a galaxy of fun and adventure where every moment is a star-studded journey!"

Week 1 | Dec 16-20 | \$185 *Field Trips Included for FIRST 24 Sign-Ups

Week 2 | Dec 23, 24, 26-27 | \$165

Week 3 | Dec 30-31, Jan 2-3 | \$165

*No Camp Wed Dec 25 & Wed Jan 1st

All information on this flyer is subject to change or cancellation
 Persons with disabilities are welcome to participate in our programs.
 Reasonable accommodations will be made with prior arrangement.
 Please be aware that some accommodations may take 30 days or longer.
 Please submit your request for an accommodation as soon as possible.
 "Achieving gender equity through a continuous commitment to girls and women in sports"

CO-REC BASKETBALL



This League is designed to provide a positive environment, skill development, fun, healthy competition, and a focus on good sportsmanship. Our goal is to ensure every child has fun and gets the opportunity to play regardless of skill level. All games will be held at Penmar Rec. Fee includes uniform and participation award.

This class is eligible for PlayLA waiver, ask for details.

Division	Age	Game Day	Price	Practice	Eval Day	Eval Time	Make Up Eval Day & Time
Lil Dribblers	3-4	Sat	\$180	Sat	N/A	N/A	N/A
Pee-Wees	5-6	Sat	\$180	Thur	N/A	N/A	N/A
Rookies	7-8	Sat	\$180	Fri	Wed 12/4	4pm	Sat 12/7 9am
Minors	9-10	Sat	\$180	Wed	Wed 12/4	5pm	Sat 12/7 10am
Majors	11-12	Sat	\$180	Thu	Wed 12/4	6pm	Sat 12/7 11am
Juniors	13-15	Fri	\$180	Tues	Wed 12/4	7pm	Sat 12/7 12pm



GIRLS BASKETBALL

Learn the basic skills, fundamentals, and sportsmanship of this fun and exciting game! Children play every game and will enjoy an uplifting atmosphere. All games will be held at Penmar Rec. Fee includes uniform and participation award.

This class is eligible for PlayLA waiver, ask for details.

Division	Age	Game Day	Price	Practice	Eval Day	Eval Time	Make Up Eval Day & Time
Rookie/Minors	8-10	Sun	\$180	Varies	Thu 12/5	5pm	Sat 12/7 1pm
Major/Juniors	11-15	Sun	\$180	Varies	Thu 12/5	6pm	Sat 12/7 2pm

CO-REC SOCCER SKILLS TRAINING

A dynamic soccer class designed for various ages, where participants can learn and enhance their skills. Participants develop key soccer fundamentals, including dribbling, passing, shooting, and teamwork and sportsmanship. Whether your child is a beginner just learning or an experienced player looking to refine their game, our class offers personalized instruction to meet each participant's needs.

This class is eligible for PlayLA waiver, ask for details.

Ages:3-4	Sat	\$80	8:30am-9am	8 sessions	1/11-3/1	Instructor: Coach Jojo
Ages:5-6	Sat	\$80	9am-10am	8 sessions	1/11-3/1	Instructor: Coach Jojo
Ages:7-8	Sat	\$80	10am-11am	8 sessions	1/11-3/1	Instructor: Coach Jojo
Ages:9-10	Sat	\$80	11am-12pm	8 sessions	1/11-3/1	Instructor: Coach Jojo



BASEBALL SKILLS TRAINING

A baseball skills class for all skill levels that has something to offer players with broad ranges of experience. Good for beginners as well as those who want to step their game up to the next level. This class will focus on small games and drills to promote growth in baseball skills.

This class is eligible for PlayLA waiver, ask for details.

Ages:5-6	Sat	\$80	9am-10am	8 sessions	1/11-3/1	Instructor: Coach Diego
Ages:7-8	Sat	\$80	10am-11am	8 sessions	1/11-3/1	Instructor: Coach Diego
Ages:9-10	Sat	\$80	11am-12pm	8 sessions	1/11-3/1	Instructor: Coach Diego

HOOP DREAMS ACADEMY

Join our advanced basketball skills class to improve your game and have fun! This program focuses on essential skills like dribbling, shooting, passing, and defense. Each session includes engaging drills, teamwork exercises, and game strategies to boost your confidence on the court. Whether you're a beginner or looking to refine your skills, this class is perfect for all levels. Get ready to elevate your game and make new friends along the way!

This class is eligible for PlayLA waiver, ask for details.

12-14	Mon	\$80	4:30pm-5:30p	8 sessions	1/6-2/24	Instructor: Coach Josh
15-17	Mon	\$80	5:45pm-6:45pm	8 sessions	1/6-2/24	Instructor: Coach Josh





FOLKLORICO

Beginner friendly class to learn the traditional styles of dance from the different states and regions of Mexico.

This class is eligible for PlayLA waiver, ask for details.

Instructor: Mercedes

Ages: 7-15 Sat \$80 12pm-1:30pm 8 Sessions 1/11-3/1



CHEER DANCE & DRILLS

Get ready to shine in our Cheer and Dance Class! Perfect for all skill levels, this energetic program combines cheerleading dances and chants with dynamic dance routines. Build confidence, improve coordination, and have a blast with friends while mastering routines that will light up any performance.

This class is eligible for PlayLA waiver, ask for details.

Instructor: Sadie

Ages: 8-12 Fri \$80 5:15pm-6pm 8 Sessions 1/10-2/28

TINY TWIRLERS

Welcome to "Tiny Twirlers," where your little ones can jump, spin, and groove in a fun-filled dance adventure! Designed for ages 4-6, this beginner class introduces toddlers to the joy of movement through playful games, music, and imaginative play. Each session encourages creativity, coordination, and social skills, all while having a blast! Join us for a delightful time of dancing, laughing, and making new friends in a safe and nurturing environment. Let's get moving and twirling together!

This class is eligible for PlayLA waiver, ask for details.

Instructor: Bree

Ages: 4-6 Mon \$80 4:15pm-5pm 8 Sessions 1/6-2/24



ADULT ART

Practices basic drawing and painting skills while experimenting with various materials and techniques. Personal photos, sketches, and ideas can be used as inspiration for a finished painting or be inspired by your classmates and instructors.

Instructor: Steve

Monthly	18+	Tue	\$60	6pm-9pm	4 sessions	1/7-3/25
---------	-----	-----	------	---------	------------	----------



TRACK & FIELD

Athletes will learn an array of skills such as form running, start positions, long jump, obstacle course, 200 meter run, relays, hurdles, shot put, javelin throw and much more!!

This class is eligible for PlayLA waiver, ask for details.

Ages: 5-7	Wed	\$80	4pm-4:45pm	8 Sessions	1/8-2/26	Instructor: Coach Christina
Ages: 8-12	Wed	\$80	5pm-5:45pm	8 Sessions	1/8-2/26	Instructor: Coach Christina

VOLLEYBALL SKILLS TRAINING

Learn the basic fundamentals of volleyball including proper footwork, serving, setting, hitting, and passing while improving players hand/eye coordination and physical fitness.

This class is eligible for PlayLA waiver, ask for details.

Beginner	8-10	Mon	\$80	4pm-5pm	8 sessions	1/6-2/24	Instructor: Coach Chris
Intermediate	8-10	Mon	\$80	5pm-6pm	8 sessions	1/6-2/24	Instructor: Coach Chris
Majors	11-14	Mon	\$80	6pm-7pm	8 sessions	1/6-2/24	Instructor: Coach Chris

PICKLEBALL SKILLS TRAINING

Participants will learn foundational skills such as the ready position, how to hold a paddle and technique on serve, returns and volleys.

We recommend bringing your own paddle, water bottle and towel.

This class is eligible for PlayLA waiver, ask for details.

8-11	Tue	\$80	4pm-5pm	8 sessions	1/7-2/25	Instructor: Coach Gabby
8-11	Wed	\$80	4pm-5pm	8 sessions	1/8-2/26	Instructor: Coach Chris





Tiny Tots Enrichment

Tiny Tots is facilitated by our team of caring and compassionate teachers who understand the importance of teaching each child as an individual. In each class, children will experience circle time, music, story time, games and outside play. We are very proud of our culturally diverse students and staff who help encourage and host special events and performances throughout the year.

Child **MUST** be toilet trained and able to participate without a parent or caregiver.
NO EXCEPTIONS
 Must provide a healthy morning snack daily.

Instructors: Kaylen H., Destiny L., Meaghan J.

Yearly Registration Fee: \$65

DATES	DAYS	TIME	AGE	PRICE
January	Mon-Thu	9am-12pm	2.5-5	\$275
February	Mon-Thu	9am-12pm	2.5-5	\$275
March	Mon-Thu	9am-12pm	2.5-5	\$275
April	Mon-Thu	9am-12pm	2.5-5	\$275

*Ask about our Tiny Tots Extended Hour

After School Club (ASC)

After School Club provides childcare for children in a safe and supervised environment at the end of the school day. Trained staff pick-up students from local schools and bring back to the center. Our main focus is homework help first. We provide a healthy snack, sports activities, and enrichment games and classes.

This program runs from school dismissal to 5:30pm on all LAUSD instructional days. ASC will not be held on school holidays, pupil free days and City Observed Holidays

Instructors: Bree M, Gabby C & Penmar Staff

Yearly Registration Fee: \$65

DATES	DAYS	TIME	GRADE	PRICE
January	Mon-Fri	2:30pm-5:30pm	TK-5	\$240/\$220 3 day
February	Mon-Fri	2:30pm-5:30pm	TK-5	\$240/\$220 3 day
March	Mon-Fri	2:30pm-5:30pm	TK-5	\$240/\$220 3 day
April	Mon-Fri	2:30pm-5:30pm	TK-5	\$240/\$220 3 day

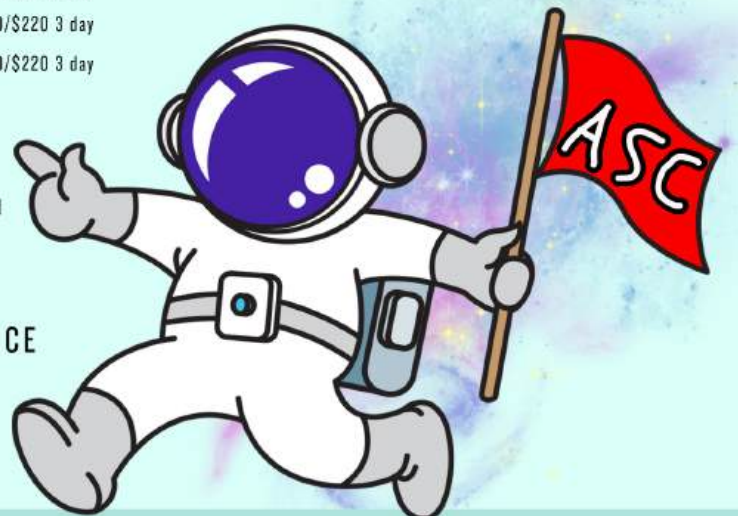


Kids Corner

This extended care program is designed to provide a safe and supervised environment for children. A variety of age-appropriate activities are planned which may include: table games, outdoor play, arts and crafts, homework time, and story time.

Instructor: Penmar Staff

DATES	DAYS	TIME	GRADE	PRICE
Jan-March	Mon-Thu	5:30pm-6pm	TK-5	\$50
Jan-March	Fri	5pm-5:30pm	TK-5	\$50





PENMAR RECREATION CENTER

134J LAKE ST. VENICE, CA 90291
 OFFICE: (310) 396-8735
 EMAIL: PENMAR.RECREATIONCENTER@LACITY.ORG

CO-REC PLAYLA BASKETBALL



Spots will not be held without payment

DIVISION	AGE	GAME DAY	PRICE	PRACTICE	EVAL DAY	EVAL TIME	MAKE UP EVALUATIONS
Lil Dribblers	3-4	Sat	\$180	Sat	N/A	N/A	N/A
Pee-Wees	5-6	Sat	\$180	Thur	N/A	N/A	N/A
Rookies	7-8	Sat	\$180	Fri	Wed 12/4	4pm	Sat 12/7 @9am
Minors	9-10	Sat	\$180	Wed	Wed 12/4	5pm	Sat 12/7 @10am
Majors	11-12	Sat	\$180	Thu	Wed 12/4	6pm	Sat 12/7 @11am
Juniors	13-15	Fri	\$180	Tues	Wed 12/4	7pm	Sat 12/7 @12pm

Fee includes: uniform & medal
 Players will be selected through a common draft to provide competitive fairness
 Players are not guaranteed to be placed on specific teams
 Evaluations are mandatory for new participants or if player is moving up a division

League available for \$10 with waiver through PlayLA



Play LA Youth and Adaptive Youth Sports Program is made possible by the LA28 Olympic and Paralympic Games. Waiver available for those who qualify, ask for details.

All information on this flyer is subject to change or cancellation
 Persons with disabilities are welcome to participate in our program.
 Reasonable accommodations will be made with prior arrangement.
 Please be aware that some accommodations may take 30 days or longer.
 Please submit your request for an accommodation as soon as possible.
 Achieving gender equity through a continuous commitment to girls and women in sports"

PENMAR RECREATION CENTER

1341 LAKE ST, VENICE, CA 90291
OFFICE: (310) 396-8735
EMAIL: PENMAR.RECREATIONCENTER@LACITY.ORG



GPLA PLAYLA BASKETBALL



Spots will not be held without payment

DIVISION	AGE	GAME DAY	PRICE	PRACTICE	EVAL DAY	EVAL TIME	MAKE UP EVALUATIONS
Rookie/Minors	8-10	Sun	\$180	Varies	Thu 12/5	5pm	Sat 12/7 @1pm
Major/Juniors	11-15	Sun	\$180	Varies	Thu 12/5	6pm	Sat 12/7 @2pm

Fee includes: uniform & medal
 Players will be selected through a common draft to provide competitive fairness
 Players are not guaranteed to be placed on specific teams
 Evaluations are mandatory for new participants or if player is moving up a division
 League available for \$10 with waiver through PlayLA



GPLA



Play LA Youth and Adaptive Youth Sports Program is made possible by the LA28 Olympic and Paralympic Games. Waiver available for those who qualify, ask for details.



All information on this flyer is subject to change or cancellation
 Persons with disabilities are welcome to participate in our programs.
 Reasonable accommodations will be made with prior arrangement.
 Please be aware that some accommodations may take 30 days or longer.
 Please submit your request for an accommodation as soon as possible.
 "Achieving gender equity through a continuous commitment to girls and women in sports"

PLAY LA Youth and Adaptive Sports

TRACK & FIELD



Cost: \$80 / Ages 5-12

1341 Lake St. Venice, CA 90291

Penmar Recreation Center

8 weeks, beginning January 8th

Age 5-7 Wed 4pm-4:45pm

Age 8-12 Wed 5pm-5:45pm

Persons with disabilities are welcome to participate in our programs. Reasonable accommodations will be made with prior arrangements. All information/activities are subject to change and/or cancellation without prior notice.

"Achieving Gender Equity through a continuous commitment to girls and women in sports"

laparks.org/reccenter
penmar.recreationcenter@lacity.org
310.396.8735

Come play with us on
@penmarrc   

City of Los Angeles
Department of Recreation and Parks



SCAN HERE
TO REGISTER





City of Los Angeles Department of Recreation and Parks Penmar Recreation Center



Karen Bass, Mayor
Traci Park, Council Member District II



Board of Recreation & Parks Commissioners

Renata Simril President
Luisa Sanchez Vice President
Fiona Hutton, Marie Lloyd, Benny Tran Members

Administration

Jimmy Kim General Manager
Matthew Rudnick Executive Officer
Chinyere Stoneham Assistant General Manager



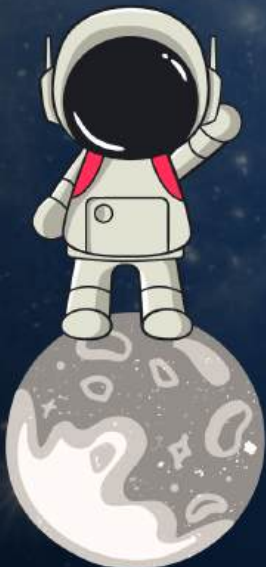
West Region Viewpoint District

Sonya Young Jimenez Superintendent, Venice Beach & West Region
Ramon Cerrillos Principal Recreation Supervisor II
Juan Soto Principal Recreation Supervisor I
Melody Valenzuela Gutierrez Recreation Supervisor, Viewpoint District

Penmar Rec Staff

Dylan Thomas Facility Director
Justin Weddle Recreation Coordinator

Eric Andrews Breanna B Marquez
Carole Booth Karla Andrews
Chris Boothby Eric Matamis
Eddie Burd Joshua Minor
Gabby Castro Diego Ortega
Brian De Pablo Frankie Sandoval
Kaylen Hiromoto Jonathan Soto
Mekhi Kimble Meaghan Jdrzejewski
Ian Lane Jaden Van Meter
Destiny Leshay Sadie White
Jojo Lopez Kaya Worozbit



Maintenance Staff

Craig Coleman- Special Program Asst. II
Edwin Duarte- Gardener