

CITY OF LOS ANGELES DEPARTMENT OF RECREATION & PARKS

OAKWOOD RECREATION CENTER

767 California Ave, Venice CA, 90291

310-452-7479

oakwood.recreationcenter@lacity.org



FALL

Brochure

CLASSES RUN FROM:

OCTOBER 7, 2024–DECEMBER 21, 2024

All programs are subject to change or cancellation.

Persons with disabilities are welcomed to participate in our classes and programs.

Reasonable accommodations will be made with prior arrangements. Please be aware that some accommodations may take 30 days or longer. Please submit your request for an accommodation as soon as possible.

Refund policy:

A 15% administrative fee will be assessed by the City of Los Angeles Department of Recreation and Parks for any patron granted a refund.

No refunds or credits for missed days.



CITY OF LOS ANGELES DEPARTMENT OF RECREATION AND PARKS

OAKWOOD RECREATION CENTER



767 CALIFORNIA AVE, / VENICE CA, 90291 / 310-452-7479
OAKWOOD.RECREATIONCENTER@LACITY.ORG

Kiddies Krafts

REGISTER NOW!

@laparks.org



WHEN: TUESDAYS

TIME: 10:30AM-11:15AM

AGES: 2-4

DATES: 10/8-12/3

FEE: \$50 FOR 8 WEEKS

****Adult is required to stay during the class**.**



Preschool crafts aren't just fun or cute. They serve a purpose. This class will teach children how to follow steps in a process, work on fine motor skills and learn about shapes, colors, numbers and letters.

All programs are subject to change or cancellation.

Persons with disabilities are welcomed to participate in our classes and programs.

Reasonable accommodations will be made with prior arrangements. Please be aware that some accommodations may take 30 days or longer. Please submit your request for an accommodation as soon as possible.

Refund policy:

A 15% administrative fee will be assessed by the City of Los Angeles Department of Recreation and Parks for any patron granted a refund. No refunds or credits for missed days.



CITY OF LOS ANGELES DEPARTMENT OF RECREATION AND PARKS

OAKWOOD RECREATION CENTER

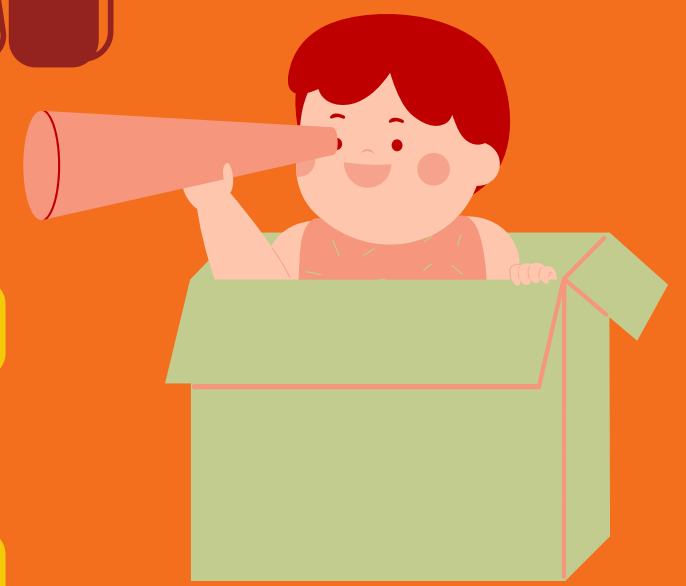


767 CALIFORNIA AVE, / VENICE CA, 90291 / 310-452-7479
OAKWOOD.RECREATIONCENTER@LACITY.ORG

TINY TYKES RUN, SKIP, JUMP



PLAYTIME



COME ON IN AND STOP BY TO HAVE SOME STRUCTURED FREE TIME. WE'LL OFFER A WIDE RANGE OF FUN PLAYTIME FAVORITES FOR THE LITTLE ONE TO GO CRAZY WITH.

Drop-ins are welcome!!!
\$10 a class

WHEN: THURSDAYS
TIME: 10:30AM-11:15AM
AGES: 1-5

DATES: 10/10-12/5
FEE: \$50 FOR 8 WEEKS

Adult is required to stay during the class.



All programs are subject to change or cancellation.

Persons with disabilities are welcomed to participate in our classes and programs.

Reasonable accommodations will be made with prior arrangements. Please be aware that some accommodations may take 30 days or longer. Please submit your request for an accommodation as soon as possible.

Refund policy:

A 15% administrative fee will be assessed by the City of Los Angeles Department of Recreation and Parks for any patron granted a refund. No refunds or credits for missed days.



CITY OF LOS ANGELES DEPARTMENT OF RECREATION AND PARKS

OAKWOOD RECREATION CENTER



767 CALIFORNIA AVE, / VENICE CA, 90291 / 310-452-7479
OAKWOOD.RECREATIONCENTER@LACITY.ORG

TINY TYKES

Books & Brushes



- CREATIVITY DEVELOPMENT
- STORY TELLING
- DRAWING
- PAINTING
- SELF-EXPRESSION



WHEN: FRIDAYS

TIME: 10:30AM-11:15AM

AGES: 2-5

DATES: 10/11-12/6

FEE: \$50 FOR 8 WEEKS

****Adult is required to stay during the class**.**

All programs are subject to change or cancellation.

Persons with disabilities are welcomed to participate in our classes and programs.

Reasonable accommodations will be made with prior arrangements. Please be aware that some accommodations may take 30 days or longer. Please submit your request for an accommodation as soon as possible.

Refund policy:

A 15% administrative fee will be assessed by the City of Los Angeles Department of Recreation and Parks for any patron granted a refund.

No refunds or credits for missed days.

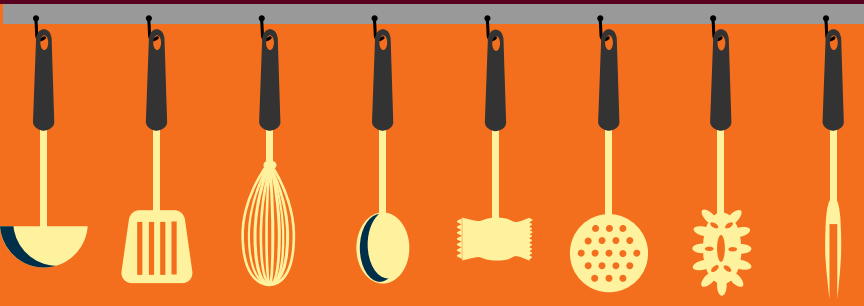


CITY OF LOS ANGELES DEPARTMENT OF RECREATION AND PARKS

OAKWOOD RECREATION CENTER



767 CALIFORNIA AVE, / VENICE CA, 90291 / 310-452-7479
OAKWOOD.RECREATIONCENTER@LACITY.ORG



LITTLE CHEFS Cooking Class



IN THIS COOKING CLASS, KIDS WILL
LEARN HOW TO PREPARE THE
KITCHEN, READ RECIPES, GET
INGREDIENTS READY, AND ENHANCE
THEIR COOKING SKILLS



WHEN: TUESDAYS
TIME: 4:00PM-5:00PM
AGES: 5-12
DATES: 10/8-12/3
FEE: \$50 FOR 8 WEEKS



All programs are subject to change or cancellation.
Persons with disabilities are welcomed to participate in our classes and programs.
Reasonable accommodations will be made with prior arrangements. Please be aware that some accommodations may take 30 days or longer. Please submit your request for an accommodation as soon as possible.

Refund policy:

A 15% administrative fee will be assessed by the City of Los Angeles Department of Recreation and Parks for any patron granted a refund.
No refunds or credits for missed days.

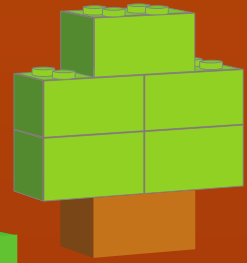


CITY OF LOS ANGELES DEPARTMENT OF RECREATION AND PARKS

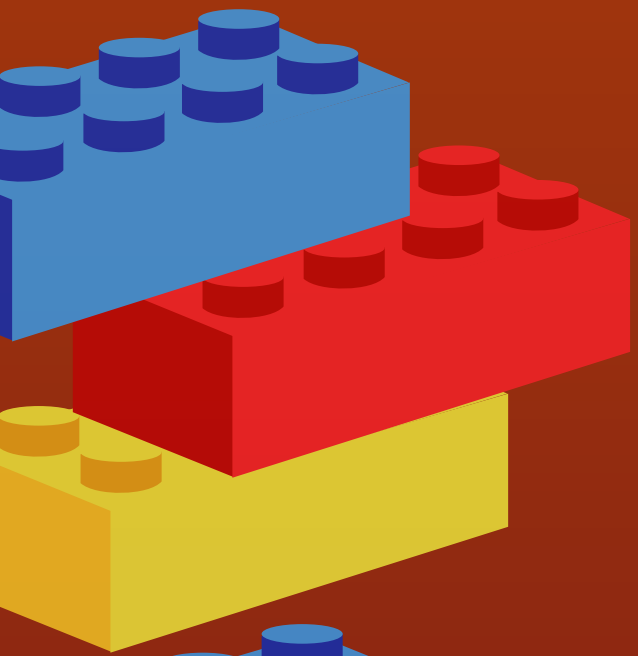
OAKWOOD RECREATION CENTER



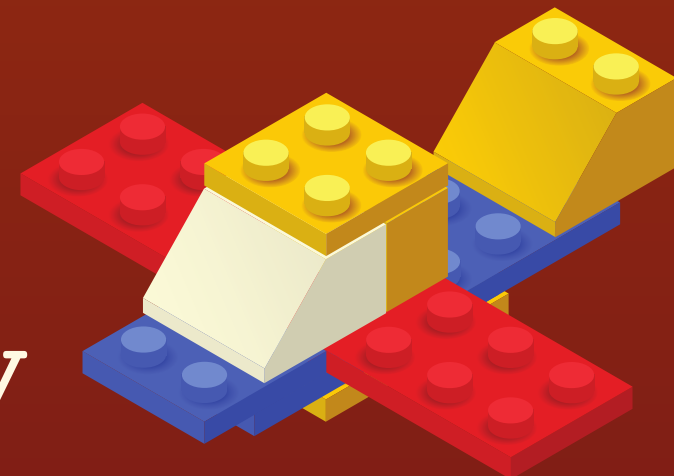
767 CALIFORNIA AVE, / VENICE CA, 90291 / 310-452-7479
OAKWOOD.RECREATIONCENTER@LACITY.ORG



Brick Building: A Duplo Experience

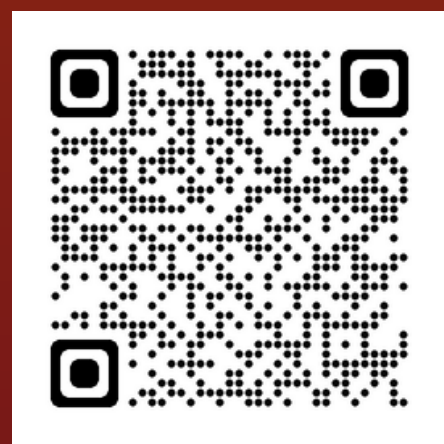


Show your creativity as you build your favorite creations!!! Each week will offer free play (with project ideas) and a show & tell at the end.



REGISTER NOW!

@laparks.org



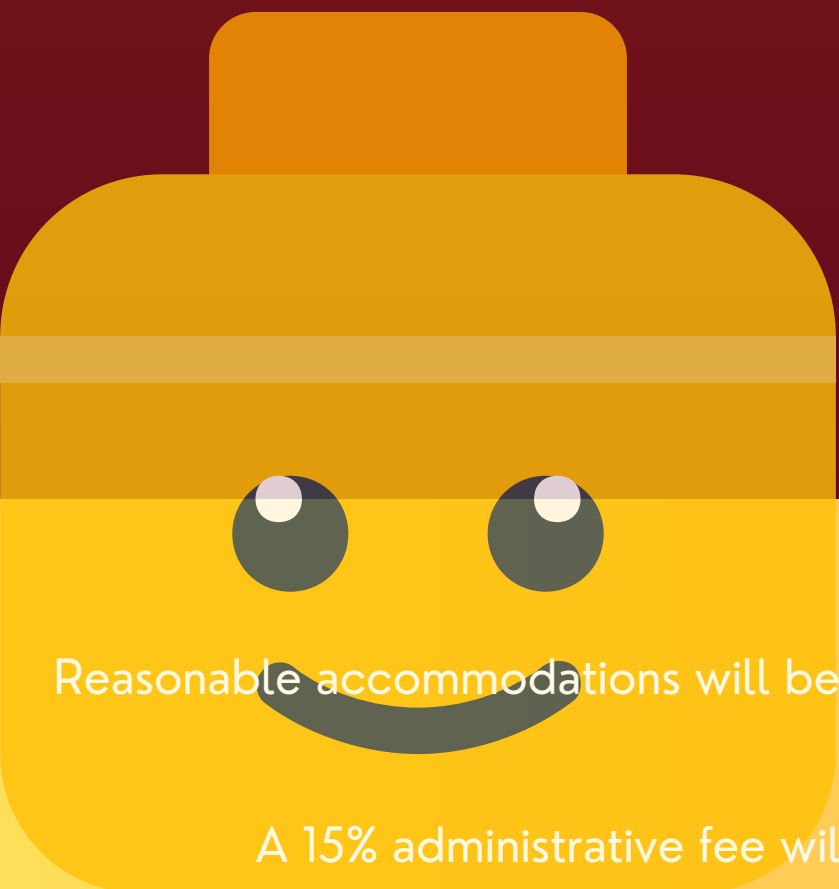
Ages: 5-9

Day: Wednesday

Times: 4pm-5pm

Dates: 10/9-12/4

Fee: \$50 for 8 weeks



All programs are subject to change or cancellation.
Persons with disabilities are welcomed to participate in our classes and programs.
Reasonable accommodations will be made with prior arrangements. Please be aware that some accommodations may take 30 days or longer. Please submit your request for an accommodation as soon as possible.

Refund policy:

A 15% administrative fee will be assessed by the City of Los Angeles Department of Recreation and Parks for any patron granted a refund.
No refunds or credits for missed days.



CITY OF LOS ANGELES DEPARTMENT OF RECREATION AND PARKS

OAKWOOD RECREATION CENTER



767 CALIFORNIA AVE, / VENICE CA, 90291 / 310-452-7479
OAKWOOD.RECREATIONCENTER@LACITY.ORG



Intro To Drawing

Introducing kids to think creatively, collaborate, and learn to choose & hone their art skills in different mediums.



Ages:
5-10

Days/Time:
Fridays
4pm-4:45pm

Fees:
\$50 for 8 weeks

Class runs from:
10/11-12/6

Register Now
[@laparks.org](https://laparks.org)



All programs are subject to change or cancellation.
Persons with disabilities are welcomed to participate in our classes and programs.
Reasonable accommodations will be made with prior arrangements. Please be aware that some accommodations may take 30 days or longer. Please submit your request for an accommodation as soon as possible.

Refund policy:

A 15% administrative fee will be assessed by the City of Los Angeles Department of Recreation and Parks for any patron granted a refund.
No refunds or credits for missed days.

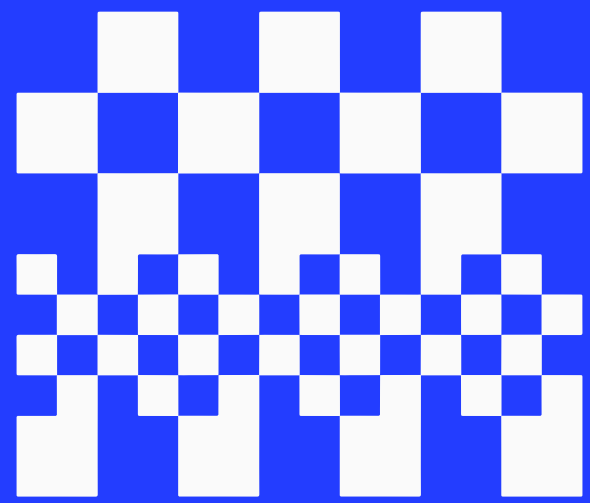


OAKWOOD RECREATION CENTER



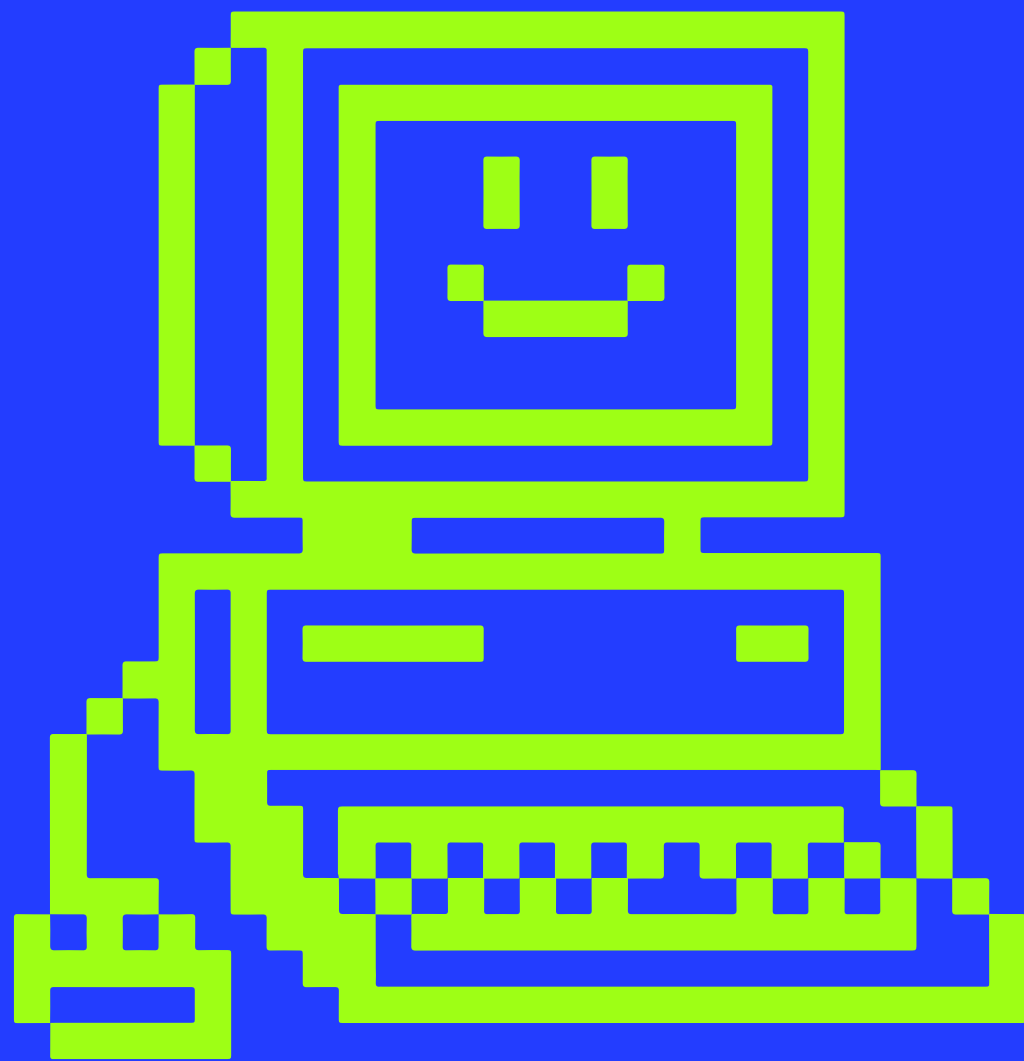
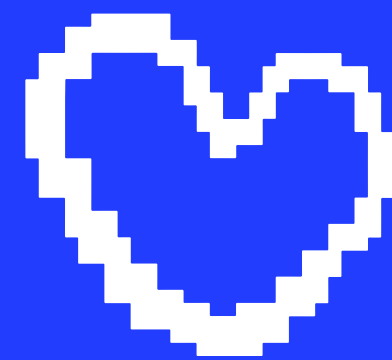
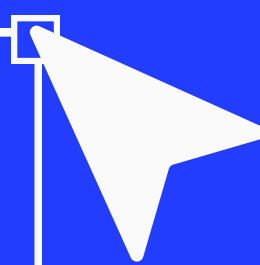
767 CALIFORNIA AVE, / VENICE CA, 90291 / 310-452-7479
OAKWOOD.RECREATIONCENTER@LACITY.ORG

Intro to



Graphic

DESIGN



EXPLORE YOUR CREATIVITY THROUGH A GRAPHIC DESIGN COURSE SUITABLE FOR ALL SKILL LEVELS.

COURSE INFORMATION

- AGES: 7-12
- DAYS: FRIDAYS
- TIME: 5PM-6PM

CLASSES RUN FROM:

10/11 - 12/13

\$50

FOR 8 WEEKS

All programs are subject to change or cancellation.

Persons with disabilities are welcomed to participate in our classes and programs.

Reasonable accommodations will be made with prior arrangements. Please be aware that some accommodations may take 30 days or longer. Please submit your request for an accommodation as soon as possible.

Refund policy:

A 15% administrative fee will be assessed by the City of Los Angeles Department of Recreation and Parks for any patron granted a refund. No refunds or credits for missed days.



CITY OF LOS ANGELES DEPARTMENT OF RECREATION AND PARKS

OAKWOOD RECREATION CENTER



767 CALIFORNIA AVE, / VENICE CA, 90291 / 310-452-7479
OAKWOOD.RECREATIONCENTER@LACITY.ORG



PAINTING WITH WATERCOLOR

Join us to learn the watercolor technique

Ages: 5-9

Day: Thursdays

Times: 4pm-5pm

Dates: 10/10-12/5

Fee: \$50 for 8 weeks



All programs are subject to change or cancellation.

Persons with disabilities are welcomed to participate in our classes and programs.

Reasonable accommodations will be made with prior arrangements. Please be aware that some accommodations may take 30 days or longer. Please submit your request for an accommodation as soon as possible.

Refund policy:

A 15% administrative fee will be assessed by the City of Los Angeles Department of Recreation and Parks for any patron granted a refund.

No refunds or credits for missed days.



CITY OF LOS ANGELES DEPARTMENT OF RECREATION AND PARKS

OAKWOOD RECREATION CENTER



767 CALIFORNIA AVE, / VENICE CA, 90291 / 310-452-7479
OAKWOOD.RECREATIONCENTER@LACITY.ORG



Beginning Gymnastics

- ➔ Ages: 5-12
- Day: Wednesdays
- Times: 4pm-5pm
- Dates: 10/9-12/4
- Fee: \$50 for 8 weeks

This fun class will focus on the basics of gymnastics. Learn basic rolls, tumbling, stretching, and other fundamental skills.



All programs are subject to change or cancellation.

Persons with disabilities are welcomed to participate in our classes and programs.

Reasonable accommodations will be made with prior arrangements. Please be aware that some accommodations may take 30 days or longer. Please submit your request for an accommodation as soon as possible.

Refund policy:

A 15% administrative fee will be assessed by the City of Los Angeles Department of Recreation and Parks for any patron granted a refund.

No refunds or credits for missed days.



CITY OF LOS ANGELES DEPARTMENT OF RECREATION AND PARKS

OAKWOOD RECREATION CENTER



767 CALIFORNIA AVE, / VENICE CA, 90291 / 310-452-7479
OAKWOOD.RECREATIONCENTER@LACITY.ORG



Discover the Magic of Gardening



Sow

The first stage is sowing the seeds into the soil. This is the first step where the seeds are planted in a place that suits the soil and weather conditions.

Ages: 5-12
Day: Tuesdays
Times: 2:30pm-3:15pm
Dates: 10/8-12/3
Fee: \$50 for 8 weeks

Plant

Once the seeds are planted, the plants begin to grow. At this stage, plants require care such as watering, fertilizing and maintenance so that they can grow well.



Reap

This happens when the plant has grown and developed well, and the fruit, seeds or other plant products are ready to be harvested and used.



All programs are subject to change or cancellation.

Persons with disabilities are welcomed to participate in our classes and programs.

Reasonable accommodations will be made with prior arrangements. Please be aware that some accommodations may take 30 days or longer. Please submit your request for an accommodation as soon as possible.

Achieving gender equity through a continuous commitment to girls and women in sports.

Refund policy:

A 15% administrative fee will be assessed by the City of Los Angeles Department of Recreation and Parks for any patron granted a refund. No refunds or credits for missed days.



CITY OF LOS ANGELES DEPARTMENT OF RECREATION AND PARKS

OAKWOOD RECREATION CENTER



767 CALIFORNIA AVE, / VENICE CA, 90291 / 310-452-7479
OAKWOOD.RECREATIONCENTER@LACITY.ORG

GPLA
Girls Play Los Angeles

LET'S CHEER! LETS DANCE!



Sign up and learn to cheer for your school teams, or just because you love it!



Learn new
cheers, stunts,
and drills!

Cheer

Time : 4pm-5pm

Day: Fridays

Fee: \$10

Dates: 10/11-12/6

Dance

Time : 5pm-6pm

Day: Fridays

Fee: \$10

Dates: 10/11-12/6



Register Now

All programs are subject to change or cancellation.
Persons with disabilities are welcomed to participate in our classes and programs.
Reasonable accommodations will be made with prior arrangements. Please be aware that some accommodations may take 30 days or longer. Please submit your request for an accommodation as soon as possible.

Achieving gender equity through a continuous commitment to girls and women in sports.

Refund policy:

A 15% administrative fee will be assessed by the City of Los Angeles Department of Recreation and Parks for any patron granted a refund.
No refunds or credits for missed days.



CITY OF LOS ANGELES DEPARTMENT OF RECREATION & PARKS

OAKWOOD RECREATION CENTER



767 CALIFORNIA AVE, / VENICE CA, 90291 / 310-452-7479
OAKWOOD.RECREATIONCENTER@LACITY.ORG

PLAYLA

JUDO

DAY: THURSDAYS

DATES: 10/10 - 12/5

TIME: 6:30 PM - 7:30 PM

AGES: 5 - 15

FEE: \$10

***AN EXCELLENT BEGINNERS CLASS
THAT TEACHES BASIC JUDO
TECHNIQUES & IMPROVES SELF
CONFIDENCE***



All programs are subject to change or cancellation. Persons with disabilities are welcomed to participate in our classes and programs. Reasonable accommodations will be made with prior arrangements. Please be aware that some accommodations may take 30 days or longer.

Please submit your request for an accommodation as soon as possible.

Achieving gender equity through a continuous commitment to girls and women in sports.

PlayLA Youth and Adaptive Youth Sports Program is made possible by the LA28 Olympic and Paralympic Games. Waivers available for those who qualify, ask for details.

Refund policy:

A 15% administrative fee will be assessed by the City of Los Angeles Department of Recreation and Parks for any patron granted a refund.

No refunds or credits for missed days.



CITY OF LOS ANGELES DEPARTMENT OF RECREATION AND PARKS

OAKWOOD RECREATION CENTER



767 CALIFORNIA AVE, / VENICE CA, 90291 / 310-452-7479
OAKWOOD.RECREATIONCENTER@LACITY.ORG

50+ SENIOR ACTIVITIES

Classes begin the week of October 7th & run for 8 weeks.
Social Hour and Senior Lunch runs continuously through the year except holidays.

SOCIAL HOUR/ SENIOR LUNCH

JEWISH FAMILY SERVICE LA

Days:
Mon-Fri

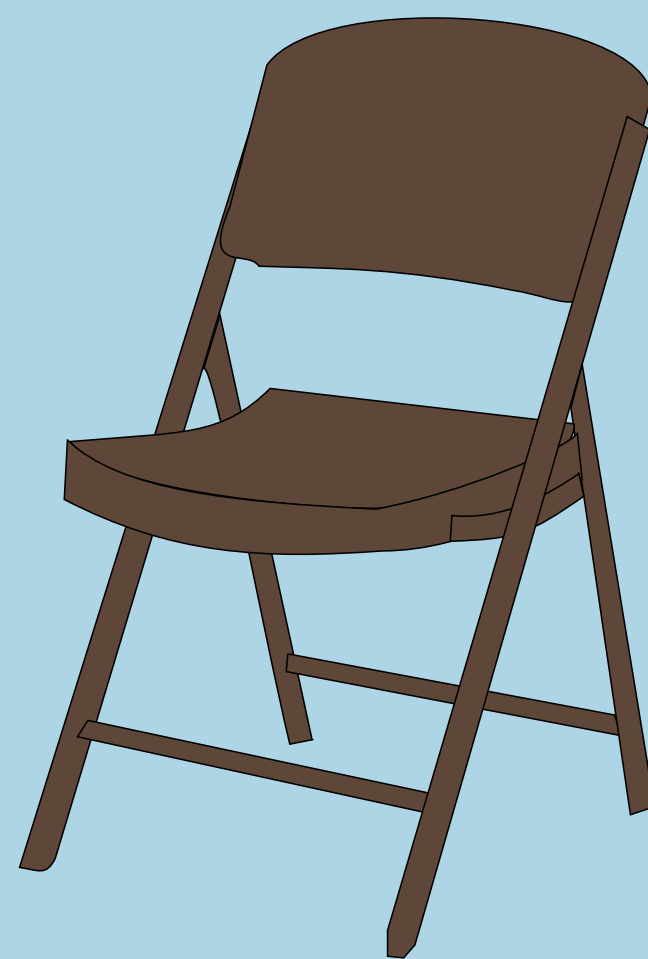
Times:
11am-12pm
12pm-1pm



CHAIR EXERCISES

Day:
Thursday's

Times:
1pm-2pm



GARDENING

Day:
Monday's

Times:
1pm-2pm



All programs are subject to change or cancellation.

Persons with disabilities are welcomed to participate in our classes and programs.

Reasonable accommodations will be made with prior arrangements. Please be aware that some accommodations may take 30 days or longer. Please submit your request for an accommodation as soon as possible.

Refund policy:

A 15% administrative fee will be assessed by the City of Los Angeles Department of Recreation and Parks for any patron granted a refund.
No refunds or credits for missed days.

Don't forget about these other fun and exciting programs, classes and events...

KAREN BASS - MAYOR

TRACI PARK - COUNCIL MEMBER, DISTRICT #11

RECREATION AND PARKS COMMISSIONERS

RENATA SIMRIL - PRESIDENT

LUIS SANCHEZ - VICE PRESIDENT

FIONA HUTTON, MARIE LLOYD, BENNY TRAN - MEMBERS

RECREATION AND PARKS EXECUTIVE STAFF

JIMMY KIM - GENERAL MANAGER

MATTHEW RUDNICK - EXECUTIVE OFFICER

BELINDA JACKSON - ASSISTANT GENERAL MANAGER

SONYA YOUNG JIMENEZ - SUPERINTENDENT, VENICE BEACH & WEST REGION

RAMON CERRILLOS - PRINCIPAL RECREATION SUPERVISOR II

JUAN SOTO, PRINCIPAL RECREATION SUPERVISOR I

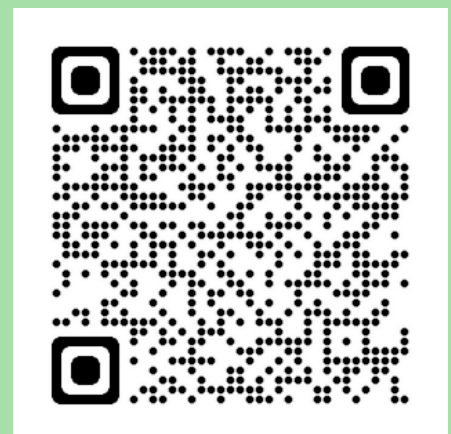
MELODY VALENZUELA - RECREATION SUPERVISOR, VIEWPOINT DISTRICT

JOHN GAVILAN - FACILITY DIRECTOR

JOHN PAUL SEDILLO - RECREATION COORDINATOR



Register @ laparks.org



All programs are subject to change or cancellation.

Persons with disabilities are welcomed to participate in our classes and programs.

Reasonable accommodations will be made with prior arrangements.

Please be aware that some accommodations may take 30 days or longer.

Please submit your request for an accommodation as soon as possible.

Achieving gender equity through a continuous commitment to girls and women in sports.

PlayLA Youth and Adaptive Youth Sports Program is made possible by the LA28 Olympic and Paralympic Games. Waivers available for those who qualify, ask for details.

Refund policy:

A 15% administrative fee will be assessed by the City of Los Angeles Department of Recreation and Parks for any patron granted a refund. No refunds or credits for missed days.