



City of Los Angeles Department of Recreation and Parks

MAR VISTA RECREATION CENTER

11430 Woodbine St. Los Angeles CA 90066

(310)398-5982 - LAPARKS.ORG



**AGES
5-13**

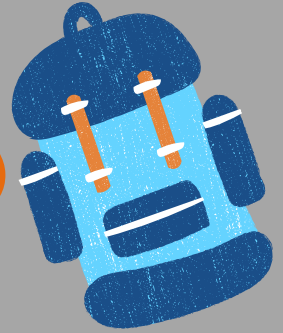
Fall Day Camp



**\$10 Registration Fee
includes T-shirt**



NOV. 25-27
**NO CLASS NOV 28TH &
29TH**

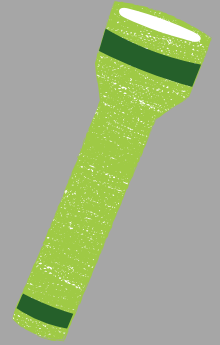


CLASS HOURS: 8AM-4PM

Registration begins Aug 27, 2024

Fee Per Day: \$50.00

**Class Activities: Sports, Games, Arts &
Crafts, Cooking, Science and More!**

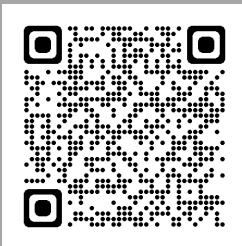
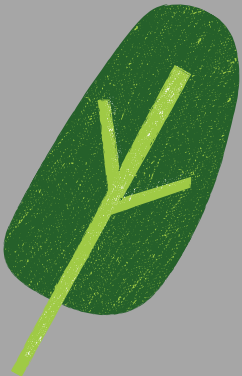
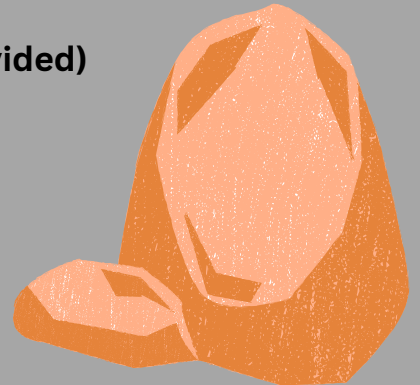


All Children need to:

***Bring a morning snack (afternoon snack provided)**

*** Bring their own lunch**

***Wear their camp t-shirt daily**



Extended

Care

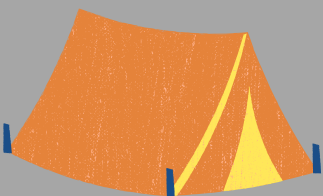
4-6pm

\$10/Day

People with all abilities are welcome to participate in our programs. Reasonable accommodations will be made with prior arrangements. Please be aware that some accommodations may take 30 days or longer.

Please submit your request as soon as possible. All information is subject to change without notice.

REFUND POLICY: A non-refundable 20% administration fee will be assessed by the Recreation Center for any patron granted a refund, change or transfer per class or activity.



Fall Classes HOURS: 8AM-4PM

Registration begins Aug 12th, 2024

**ACTIVITIES: Games, Sports, Arts & Crafts, Cooking,
Science, and More!**

**Extended
Care
4-6pm
4-Days: \$40
3-Days: \$30**

Extra T-Shirts are \$10/shirt

**Registration
Fee: \$ 25
per Camper**

All Campers need to:

***bring a morning snack (afternoon snack provided)**

*** bring their own lunch**

***wear their camp t-shirt daily**

People with all abilities are welcome to participate in our programs. Reasonable accommodations will be made with prior arrangements. Please be aware that some accommodations may take 30 days or longer.

Please submit your request as soon as possible. All information is subject to change without notice.

REFUND POLICY: *A non-refundable 20% administration fee will be assessed by the Recreation Center for any patron granted a refund, change or transfer per class or activity.*