

MACARTHUR PARK COMMUNITY CENTER



2230 W. 6th St., Los Angeles, CA 90057

(213) 368-0520

macarthurpark.communitycenter@lacity.org

www.laparks.org/recenter/macarthur



Follow Us:
[@macarthurpark_cc](https://www.instagram.com/macarthurpark_cc)



Scan To Visit
Our Webpage

FACILITY INFORMATION



HOURS OF OPERATION

Monday - Friday	9:00 a.m. - 8:00 p.m.
Saturday	9:00 a.m. - 5:00 p.m.
Sunday	Closed

IMPORTANT NUMBERS

MacArthur Park Office	(213) 368-0520
Region Office	(213) 485-1310
Park Film Office	(323) 644-6220
Municipal Sports	(818) 246-5613
Office of Public Safety	(213) 978-4670
Park Rangers	(323) 906-7390
LAPD Non- Emergency	(877) ASK-LAPD

IMPORTANT DATES

Spring League Registration	02/03/2025
Spring League Starts	04/05/2025
Spring Class Registration	03/03/2025
Spring Classes Begin	04/07/2025
Memorial Day (Closed)	05/26/2025
Juneteenth (Closed)	06/19/2025

IMPORTANT INFORMATION

All programs are offered on a first-come, first-serve basis.

Participants must have reached the minimum age by the first day of the program.

All classes and programs are subject to change.

Persons with disabilities are welcomed to participate in our classes and programs.

Reasonable accommodations will be made with prior arrangements. Please be aware that some accommodations may take 30 days or longer. Please submit your request for an accommodation as soon as possible.

Achieving gender equity through continuous commitment to girls and women in sports.

Registration Information

Full payment is required at time of registration.
A participant is not considered registered until full payment has been received.

Payments may be made by cash, check, debit card
or credit card (Visa or Mastercard only).

Please make checks payable to the City of Los Angeles.
When paying in cash, please have exact amount.
Recreation staff cannot make change.

A \$35 collection fee will be charged for each returned check.

Administration may cancel or combine activities if minimum enrollment is not met.

Class and League times and dates are subject to change.

Refund Policy

You may request a refund before the program's scheduled first day.

A 15% administrative fee will be deducted from all refunds.

Full refunds are only given if recreation center cancels a class or program.

There will be no refunds after the program has begun unless a class or sports league is changed or cancelled by the recreation center.

Please allow 6-8 weeks for the processing of all refund requests.

Volunteer Information

Give back to your community and make a difference in the life of a child. MacArthur Park Community Center is seeking committed individuals that wish to dedicate time to assist in providing quality recreation.

The LA Parks Volunteer Program accepts minors, aged 14 and up with parental/guardian approval. Live scan fingerprinting and background checks are required.

For more information, please contact the main office at (213) 368-0520. Visit www.laparks.org/volunteerapp to complete and submit your New Volunteer application.

Park Advisory Board

Park Advisory Boards (PABs) are essential to the overall operation of a recreation facility.

The partnership between staff and community members is of primary importance in identifying and meeting the recreational needs of the community.

A Park Advisory Board works to make facilities safe, clean and hospitable while offering guidance and assistance on programming and fundraising.

If you would like to join the MacArthur Park Community Center Advisory Board, please stop by the office for more information.

Facility Rental

Facility usage permits are available for anyone (over 18 years old) interested in using the facility for meetings or personal usage such as birthday parties, baby showers and/or community events.

Request must be made at least 4-6 weeks prior to the event.

Facility rental payments may be made by cash, check, debit card, credit card (Visa or Mastercard only) or money orders. and all fees must be paid in full at least 2 weeks prior to the start of the event.

Filming

A film permit is required to make any commercial still photograph, commercial motion picture, television program, or similar production at a city park or recreation facility.

Please contact the Park Film Office for more information at (323) 644-6220.



MacArthur Park Community Center COED SOCCER LEAGUE

Divisions	Year Born
Tiny Tots	2021 - 2020
Rookies	2019 - 2018
Pee-Wees	2017 - 2016
Minors	2015 - 2014
Majors	2013 - 2012
Juniors	2011, 2010, 2009
Seniors	2008 - 2007

*Seniors cannot turn 18 during the season.

\$10 Per Participant



2025 Spring Season: April 5th - June 7th
Registration Starts: Monday, February 3rd

Register Online or In Person

Evaluations:

Friday, March 7th

Minors and Majors at 6:00 p.m. and Juniors at 7:00 p.m.

Good sportsmanship is everyone's responsibility. Be a good sport.



MacArthur Park Community Center

GIRLS SOCCER

Divisions	Year Born
Minors	2015 - 2014
Majors	2013 - 2012
Juniors	2011, 2010, 2009



\$10 Per Participant

2025 Spring Season: April 5th - June 7th

Registration Starts: Monday, February 3rd

Register Online or In Person

Evaluations:

Friday, March 7th

Minors and Majors at 6:00 p.m. and Juniors at 7:00 p.m.

Good sportsmanship is everyone's responsibility. Be a good sport.



MacArthur Park Community Center



BALLET



Sessions	Ages	Day	Time
Ballet 1	5-8	Tuesdays	5:00 p.m. - 6:00 p.m.
Ballet 2	9-12	Tuesdays	6:00 p.m. - 7:00 p.m.

\$10 Per Participant

Registration Starts: Monday, March 3rd

Classes: April 8th - May 20th

Register Online or In Person



TUMBLING

Sessions	Ages	Day	Time
Tumbling 1	5-8	Thursdays	5:00 p.m. - 6:00 p.m.
Tumbling 2	9-12	Thursdays	6:00 p.m. - 7:00 p.m.

\$10 Per Participant

Registration Starts: Monday, March 3rd

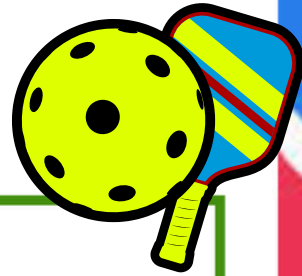
Classes: April 10th - May 22nd

Register Online or In Person



MacArthur Park Community Center

PICKLEBALL



Sessions	Ages	Day	Time
Pickleball 1	5-8	Mondays	4:00 p.m. - 5:00 p.m.
Pickleball 2	9-12	Mondays	5:00 p.m. - 6:00 p.m.

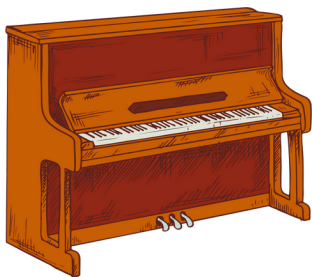
\$10 Per Participant

Registration Starts: Monday, March 3rd

Classes: April 7th - June 2nd

No Class on May 26th

Register Online or In Person



PIANO CLASSES

Ages 5-17

\$50 Per Participant Monthly: January - December

***Closed on all City Observed Holidays**

Classes Are Thursdays

One Participant Per Session

30 min. Sessions from 4:00 p.m. - 7:30 p.m.

***Call Center for Info on Available Time Slots**

Register Online or In Person



MacArthur Park Community Center

TINY TOT PROGRAMS

LITTLE DRIBBLERS

Ages: 3-5

\$10 Per Participant

Registration Starts: Monday, March 3rd

Saturdays: April 12th - May 31st

9:00 a.m. - 10:00 a.m.

Register Online or In Person



SOCCKER



Year Born: 2021 - 2020

\$10 Per Participant

2025 Spring Season: April 5th - June 7th

Registration Starts: Monday, February 3rd

Saturdays: April 5th - June 7th

10:00 a.m. - 11:00 a.m.

Register Online or In Person

MacArthur Park Community Center

AFTER SCHOOL

PROGRAM

Ages: 5 - 12

Registration Fee: \$25

Monthly Fee: \$45

August 12, 2024 - June 10, 2025

Monday - Friday

2:30 p.m. - 6:30 p.m.

We Pick Up From:

- **Charles White Elementary**
- **Esperanza Elementary**
- **MacArthur Elementary**



Includes:

- **Pick Up From School**
- **Homework Help**
- **Arts and Crafts**
- **Games**
- **Snack**



LAUSD School Year 2024 - 2025

(No Program on All City Observed Holidays and LAUSD Observed Holidays)

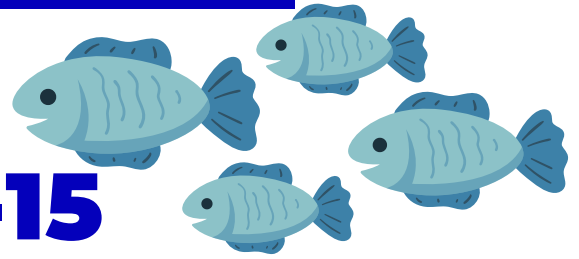
Register Online or In Person

Good sportsmanship is everyone's responsibility. Be a good sport.
The classes and programs in this brochure may be subject to cancellation.

MacArthur Park Community Center

FISHING CLUB

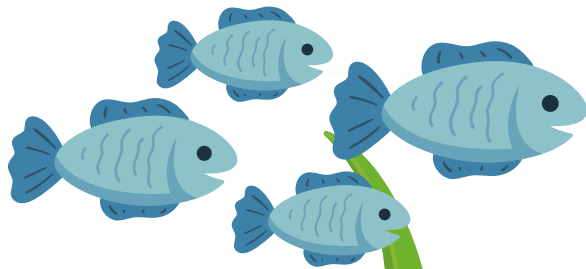
Ages: 4-15



2nd Saturday of the Month
Spring Dates:

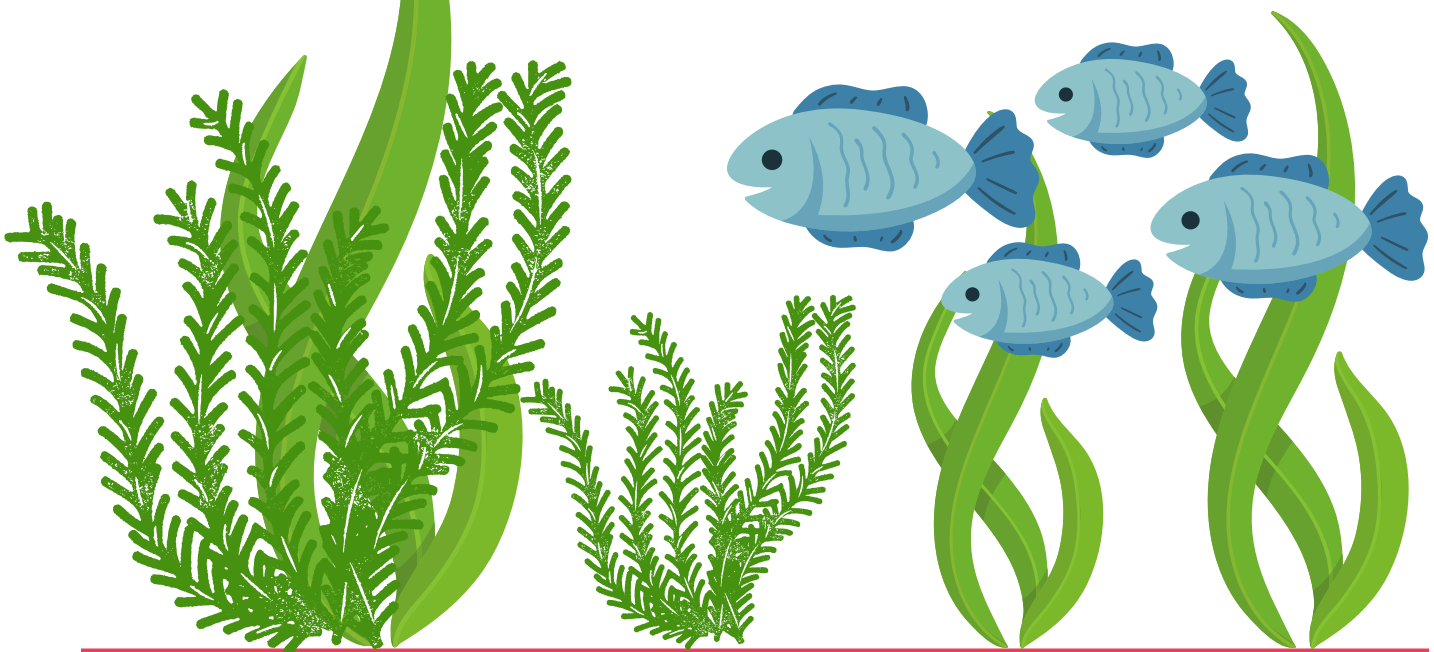
March 8th: 10:00AM - 12:00PM

April 12th: 10:00AM - 12:00PM



FREE!

***Come Learn to Fish
with our LAPD Officers!**



MacArthur Park Community Center

SPRING EVENT

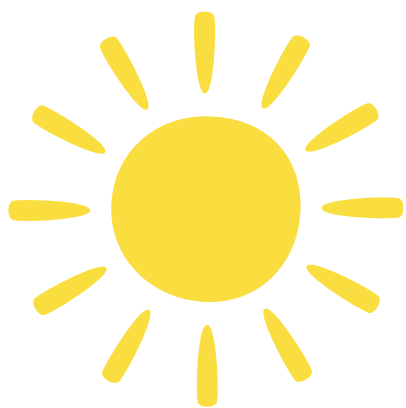
FREE!

Saturday, April 5th

10:00 a.m.- 2:00 p.m.

Come and Enjoy!

- **An Egg Hunt**
- **Arts and Crafts**
- **Games**
- **Music and More!**



MacArthur Park Community Center

SPRING CAMP

Ages: 5 - 12

Registration Fee: \$25

Weekly Fee: \$50

April 14th - April 18th

Monday - Friday

8:00 a.m. - 6:00 p.m.



Includes:

- **Arts and Crafts**
- **Sports**
- **Snack**



MacArthur Park Community Center

SUMMER CAMP

Ages: 5 - 12

Registration Fee: \$25

Weekly Fee: TBD

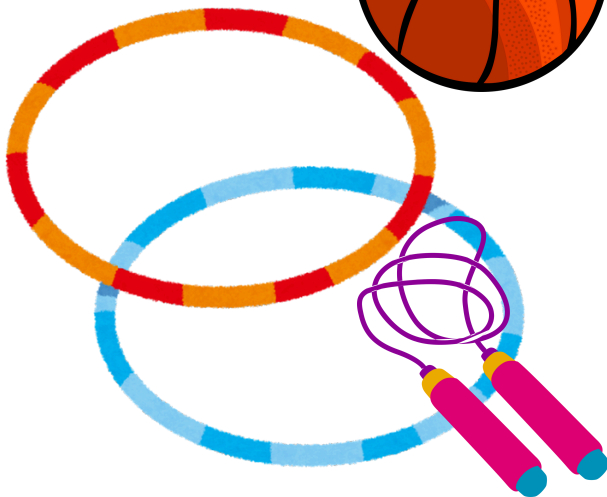
June 11th - August 8th

Monday - Friday

8:00 a.m. - 6:00 p.m.

Includes:

- **Arts and Crafts**
- **Sports**
- **Snack**



MACARTHUR PARK COMMUNITY CENTER

**Spring
2025**

2230 W. 6th St., Los Angeles, CA 90057
(213) 368-0520

macarthurpark.communitycenter@lacity.org
www.laparks.org/recenter/macarthur



OUR MISSION

Our mission is to enrich the lives of the residents of Los Angeles by providing safe, welcoming parks and recreation facilities and affordable, diverse recreation and human services activities for people of all ages to play, learn, contemplate, build community and be good stewards of our environment.

MACARTHUR PARK MAP



OUR VISION

Our vision is to provide affordable recreational, physical and cultural opportunities for all of Los Angeles residents, with a focus on families, youth development and building healthy communities. The programs and services offered by the Department will provide excellent value and quality and emphasize the equitable distribution of resources throughout the city. We will offer these programs in safe, attractive and well-maintained facilities that will reflect the public's needs and interests.

OUR MOTTO

We build healthy communities through people, parks and programs.



Follow us
[@macarthurpark_cc](https://www.instagram.com/macarthurpark_cc)



Scan To Visit
Our Webpage

**CITY OF LOS ANGELES
DEPARTMENT OF RECREATION AND PARKS**

Karen Bass, Mayor
Eunisses Hernandez, Councilmember 1st District

BOARD OF RECREATION & PARK COMMISSIONERS

Renata Simril, President
Luis Sanchez, Vice President
Fiona Hutton, Member
Benny Tran, Member

RECREATION & PARKS ADMINISTRATION

Jimmy Kim, General Manager
Matthew Rudnick, Executive Officer & Chief of Staff
Chinyere Stoneham, Assistant General Manager, Recreation Service Branch

METRO REGION RECREATION ADMINISTRATION

Anita Meacham, Superintendent
Kimberly Simonet, Principal Recreation Supervisor II
Leslie Perez, Principal Recreation Supervisor I
Juan Guzman, Recreation Supervisor, Northwest District

MACARTHUR PARK COMMUNITY CENTER

Stephanie Galvez, Recreation Facility Director

Recreation Assistants

Alysha Bagnerise, Melissa Munoz, Alexy Vela, Sarahi Orozco, Perla Venegas,
Citlali Diaz, Rafael Hernandez, Ekaterina Semkina, Art Carrasco, Aida Mendez,
Nicholas Subia, Samantha Santillano, Silvia Portillo, Alejandro Moreno, Jacob
Portillo, Anthony Melendrez, Henry Rivera, Heaven Melendrez, Ryan Santillano,
Miguel Villatoro, Elber Gonzalez

MAINTENANCE STAFF

Luis Aguilar, Park Maintenance Supervisor
Miguel Uribe, Lead Senior
Michelle Martin, Raul Valdez, Rosa Galdamez, Gardener Caretakers