



DENKER REC. CENTER



Welcome
Spring



2025

1550 W. 35th Pl.
Los Angeles, CA 90018
Office #: (323) 733-8367
Email: Denker.RecreationCenter@LACity.org





DENKER REC. CENTER

1550 W. 35TH PL LOS ANGELES, CA 90018

OFFICE: (323) 733-8367



TEEN CLUB AGES 11-17



TUES-THURS 5:30PM-8:30PM
FRIDAYS 5:00PM-9:00PM

- **ACADEMIC ENRICHMENT**
- **SOCIAL NETWORKING**
- **SELF ESTEEM BUILDING**
- **PAID WORK EXPERIENCE**
- **DAILY DROP IN**
- **FRIDAY NIGHT EXTREME TEENS**
- **FIELD TRIPS**

Persons with disabilities are encouraged to participate in our classes and programs. Reasonable accommodations may be made with prior arrangement. The classes and programs on this flyer may be subject to cancellation or change.





DENKER REC. CENTER



REGISTRATION STARTS
2/3/2025

YOUTH CO-ED BASKETBALL

FEE INCLUDES: UNIFORM,
AWARDS AND OFFICIALS

\$10



YOUTH CO-ED BASKETBALL

GAME DAYS
EVERY SATURDAY

9:30AM-10:30AM
11AM - 12PM
12PM - 2PM
2PM - 4PM

DIVISION

PEEWEE/ROOKIE
MINOR
MAJOR
JUNIOR

AGES

5yr-8yr old
9yr-10yr old
11yr - 12yr old
13yr-15yr old

GAME TIME

TBA
TBA
TBA
TBA

FIRST GAME STARTS: 3/22/25

LAST GAME ENDS 5/24/25

1550 W. 35th PL LA, CA 90018
Phone #: (323) 733-8367
Denker.RecreationCenter@LACity.org



SCAN QR
CODE OR
VISIT

laparks.org/reccenter/denker

Register
here



DENKER REC. CENTER



PLAYLA

**COMIENZA LA
INSCRIPCIÓN
2/03/2025**

BALONCESTO MIXTO JUVENIL

LA TARIFA INCLUYE: UNIFORME,
PREMIOS Y OFICIALES

\$10



BALONCESTO MIXTO JUVENIL

DÍAS DE JUEGO
TODOS LOS SÁBADOS

9:30 A.M.-10:30 A.M.
11:00 A 12:00 HORAS
12:00 P. M. A 2:00 P. M.
**DE 2:00 A 4:00
HORAS**

DIVISIÓN

PEEWEE/NOVATO
MENOR MAYOR
JUNIOR

SIGLOS

5 años - 8 años de edad
9-10 años
11 años - 12 años
13 años - 15 años

TIEMPO DE JUEGO

Por determinar Por
determinar Por
determinar Por
determinar

COMIENZA EL PRIMER JUEGO: **3/22/25**

TERMINA EL ÚLTIMO JUEGO **5/24/25**

1550 W. 35th PL LA, CA 90018

Teléfono #: (323) 733-8367

Denker.RecreationCenter@LACity.org



ESCANEA
EL CÓDIGO
QR O VISITA

Regístrate
aquí

laparks.org/reccenter/denker



DENKER REC. CENTER



REGISTRATION STARTS

2/3/2025

CO-ED BASEBALL

FEE INCLUDES: UNIFORM,
AWARDS AND OFFICIALS

\$ 10

CO-ED BASEBALL

GAME DAYS
EVERY SATURDAY

\$ 10

DIVISION

T-BALL
COACH-PITCH
MINOR/MAJOR
JUNIOR

AGES

5yr - 7yr old
8yr - 10yr old
11yr - 13yr old
14yr - 16yr old

TIME OF GAME

9:00am-10:30am
11:00am-1:00pm
1:30PM-3:00PM
3:00PM-5:00PM

FIRST GAME STARTS: 3/22/25

LAST GAME ENDS: 5/24/25

1550 W. 35th PL LA, CA 90018

Phone #: (323) 733-8367

Denker.RecreationCenter@LACity.org



SCAN QR
CODE OR
VISIT

Register
here

LAPARKS.ORG/RECCENTER/Denker

NO REFUNDS WILL BE GRANTED UNLESS PROGRAM IS CANCELED

Persons with disabilities are encouraged to participate in our classes and programs. Reasonable accommodations may be made with prior arrangement. "Achieving Gender Equity through a continuous commitment to Girls and Women in Sports" This program is subject to cancellation.



DENKER REC. CENTER



PLAY LA

COMIENZA EL REGISTRO:
2/03/2025

BEISBOL MIXTO:

Precio incluye: uniforme,
premios y oficiales

\$ 10

BEISBOL MIXTO:

Días de juego son todos
Los sábados:

\$ 10

DIVISIÓN

T-BALL
COACH-PITCH
MINOR/MAJOR
JUNIOR

AÑOS

De 5 a 7 anos
De 8 a 10 anos
De 11 a 13 anos
De 14 a 16 anos

TIEMPO DE JUEGO

9:00am-10:30am
11:00am-1:00pm
1:30PM-3:00PM
3:00PM-5:00PM

**El primer juego comienza:
el 22 de Marzo de 2025**

**El último juego termina:
24 de Mayo de 2025**

1550 W. 35th PL LA, CA 90018

Phone #: (323) 733-8367

Denker.RecreationCenter@LACity.org



Escanea
el código
QR o
visita:

LAPARKS.ORG/RECCENTER/Denker

Registrar
aquí

No se darán reembolsos a menos que se cancels el programa



DENKER REC. CENTER PLAYLA



REGISTRATION STARTS
2/3/2025

YOUTH CO-ED SOCCER

FEE INCLUDES: UNIFORM,
AWARDS AND OFFICIALS

\$ 10



YOUTH CO-ED SOCCER

FEE INCLUDES: UNIFORM,
AWARDS AND OFFICIALS

\$ 10

DIVISION

PEEWEE
ROOKIE
MINOR/MAJOR
JUNIOR

AGES

5yr - 6yr old
7yr - 8yr old
9yr - 12yr old
13yr - 15yr old

FIRST GAME STARTS: 3/22/25

LAST GAME ENDS 5/24/25

1550 W. 35th PL LA, CA 90018
Phone #: (323) 733-8367
Denker.RecreationCenter@LACity.org



SCAN QR
CODE OR
VISIT

Register
here

LAPARKS.ORG/RECCENTER/Denker

NO REFUNDS WILL BE GRANTED UNLESS PROGRAM IS CANCELED

Persons with disabilities are encouraged to participate in our classes and programs. Reasonable accommodations may be made with prior arrangement. "Achieving Gender Equity through a continuous commitment to Girls and Women in Sports" This program is subject to cancellation.



DENKER REC. CENTER PLAYLA



**COMIENZA LA
INSCRIPCIÓN
2/3/2025**

FÚTBOL JUVENIL MIXTO

LA TARIFA INCLUYE: UNIFORME,
PREMIOS Y OFICIALES

\$ 10



FÚTBOL JUVENIL MIXTO

LA TARIFA INCLUYE: UNIFORME,
PREMIOS Y OFICIALES

\$ 10

DIVISIÓN

PEEWEE
NOVATO
MENOR/MAYOR
JUNIOR

SIGLOS

5 años - 6 años de edad
7 años - 8 años
9 años - 12 años
13 años - 15 años

**COMIENZA EL PRIMER JUEGO:
el 22 de Marzo de 2025**

**TERMINA EL ÚLTIMO JUEGO
24 de Mayo de 2025**

1550 W. 35th PL LA, CA 90018

Teléfono #: (323) 733-8367

Denker.RecreationCenter@LACity.org



ESCANEA
EL CÓDIGO
QR O VISITA

Regístrate
aquí

LAPARKS.ORG/RECCENTER/Denker

NO SE CONCEDERÁN REEMBOLSOS A MENOS QUE SE CANCELE EL PROGRAMA

Se anima a las personas con discapacidades a participar en nuestras clases y programas. Se pueden realizar adaptaciones razonables con previo acuerdo. "Lograr la equidad de género mediante un compromiso continuo con las niñas y las mujeres en el deporte" Este programa está sujeto a cancelación.

DENKER REC. CENTER



REGISTRATION STARTS
2/03/2025

SOFT BALL

LEAGUE STARTS
APRIL 5, 2025

LEAGUE ENDS
MAY 24, 2025

FEE

\$10

GAME DAYS
SATURDAYS
TBA



DIVISION

MINOR
MAJOR
JUNIOR

AGES

8-10
11-12
13-15

GAME TIME

SATURDAYS - TBA
SATURDAYS - TBA
SATURDAYS - TBA

1550 W. 35th PL LA, CA 90018

Phone #: (323) 733-8367

Denker.RecreationCenter@LACity.org



SCAN QR
CODE OR
VISIT

Register
here

LAPARKS.ORG/RECCENTER/Denker

NO REFUNDS WILL BE GRANTED UNLESS PROGRAM IS CANCELED

Persons with disabilities are encouraged to participate in our classes and programs. Reasonable accommodations may be made with prior arrangement. "Achieving Gender Equity through a continuous commitment to Girls and Women in Sports" This program is subject to cancellation.

"PlayLA Youth and Adaptive Sports Program is made possible by the LA28 Olympic and Paralympic Games, allowing youth to participate for \$10. Waivers are available, ask for details.



GPLA

Girls Play Los Angeles



VOLLEYBALL



REGISTRATION BEGINS
2/3/2025



AGES
9-15
yrs old



FEE
\$10

DIVISION

MINORS
MAJORS
JUNIORS

AGES

9yr-10yr old
11yr - 12yr old
13yr - 15yr old

GAME TIMES

WEDNESDAYS - TBA
WEDNESDAYS - TBA
WEDNESDAYS - TBA



DENKER REC

1550 W. 35th Place
Los Angeles, CA 90018
Number: (323) 733-8367 |
Email: Denker.RecreationCenter@city.org



LEAGUE STARTS:
4/09/25

LEAGUE ENDS:
5/21/25

Persons with disabilities are encouraged to participate in our classes and programs. Reasonable accommodations may be made with prior arrangement. "Achieving Gender Equity through a continuous commitment to Girls and Women in Sports" This program is subject to cancellation.





GPLA

Girls Play Los Angeles



VÓLEIBOL



COMIENZA EL REGISTRO
2/3/2025



AGES
9-15
yrs old



FEE
\$10

DIVISIÓN

MENOR
ESPECIALIDAD
JÓVENES

EDADES

9 años - 10 años 11
años - 12 años 13
años - 15 años

TIEMPO DE JUEGO

Miércoles - TBA
Miércoles - TBA
Miércoles - TBA



DENKER REC

1550 W. 35th Place
Los Angeles, CA 90018
Number: (323) 733-8367 |
Email: Denker.RecreationCenter@lacity.org



COMIENZA LA LIGA:
4/09/25

LA LIGA TERMINA:
5/21/25

Persons with disabilities are encouraged to participate in our classes and programs. Reasonable accommodations may be made with prior arrangement. "Achieving Gender Equity through a continuous commitment to Girls and Women in Sports" This program is subject to cancellation.





TRACK & FIELD



Registration Starts
3/03/25

AGES 8-15
\$10
PER CHILD

Every Thursday
4:00pm - 5:00pm

8 WEEK SESSION

CLASSES BEGIN APR 10TH, 2025

CLASSES ENDS MAY 24, 2025

DENKER REC CENTER

1550 W. 35TH PL

LOS ANGELES. CA 90018

(323) 733-8367



SCAN QR
CODE OR
VISIT

laparks.org/reccenter/denker

Persons with disabilities are encouraged to participate in our classes and programs. Reasonable accommodations may be made with prior arrangement. "Achieving Gender Equity through a continuous commitment to Girls and Women in Sports" This program is subject to cancellation. "PlayLA Youth and Adaptive Sports Program is made possible by the LA28 Olympic and Paralympic Games, allowing youth to participate for \$10. Waivers are available, ask for details.



PISTA & CAMPO



Comienza el registro

3/03/25

Edades 8-15

\$10

POR NIÑO

Todos los jueves

4:00pm - 5:00pm

SESIÓN DE 8 SEMANAS

LAS CLASES COMIENZAN EL 10 DE ABRIL DE 2025

LA CLASE TERMINA EL 24 DE MAYO DE 2025

DENKER REC CENTER

1550 W. 35TH PL.

LOS ANGELES. CA 90018

(323) 733-8367

SCAN QR
CODE OR
VISIT

laparks.org/reccenter/denker



Persons with disabilities are encouraged to participate in our classes and programs. Reasonable accommodations may be made with prior arrangement. "Achieving Gender Equity through a continuous commitment to Girls and Women in Sports" This program is subject to cancellation. "PlayLA Youth and Adaptive Sports Program is made possible by the LA28 Olympic and Paralympic Games, allowing youth to participate for \$10. Waivers are available, ask for details.



JUDO

8 WEEK SESSION

DENKER REC. CENTER

1550 W. 35TH PL. LA, CA 90018
OFFICE: (323)733-8367



REGISTRATION:
3/03/25

TUESDAY - 6:30PM-8:30PM
THURSDAY - 6:30P-8:30PM

\$10 EACH
SESSION



**CLASSES BEGIN
APR 8TH, 2025**

**AGES 5-17
AGES VARY BY SITE**

Persons with disabilities are encouraged to participate in our classes and programs. Reasonable accommodations may be made with prior arrangement. "Achieving Gender Equity through a continuous commitment to Girls and Women in Sports" This program is subject to cancellation. "PlayLA Youth and Adaptive Sports Program is made possible by the LA28 Olympic and Paralympic Games, allowing youth to participate for \$10. Waivers are available, ask for details.



VISIT US AT: LAPARKS.ORG



JUDO

SESIÓN DE 10 SEMANAS

DENKER REC. CENTER

1550 W. 35TH PL. LA, CA 90018
OFFICE: (323)733-8367



MARTES - 6:30PM-8:30PM

JUEVES - 6:30PM-8:30PM

3 DE MARZO DE 2025

\$10 CADA
SESIÓN



**LAS CLASES COMIENZAN
5 DE ABRIL DE 2025
EDADES 5-17
LAS EDADES VARÍAN
SEGÚN EL SITIO**

Persons with disabilities are encouraged to participate in our classes and programs. Reasonable accommodations may be made with prior arrangement. "Achieving Gender Equity through a continuous commitment to Girls and Women in Sports" This program is subject to cancellation. "PlayLA Youth and Adaptive Sports Program is made possible by the LA28 Olympic and Paralympic Games, allowing youth to participate for \$10. Waivers are available, ask for details.



VISIT US AT: LAPARKS.ORG



JUDO

8 WEEK SESSION

<p>\$10 PER PERSON</p>	<p>YOUTH AGE 5-17</p>	<p>APR 5TH - MAY 24 2025</p>
-----------------------------------	----------------------------------	--

@DENKERRECREATIONCENTER

SATURDAYS

AGE 5-17: 10AM - 12PM

DENKER RECREATION

1550 W. 35TH PL.
LOS ANGELES, CA 90018
(323) 733-8367



SCAN QR
CODE OR
VISIT

laparks.org/reccenter/denker



Persons with disabilities are encouraged to participate in our classes and programs. Reasonable accommodations may be made with prior arrangement. "Achieving Gender Equity through a continuous commitment to Girls and Women in Sports" This program is subject to cancellation. "PlayLA Youth and Adaptive Sports Program is made possible by the LA28 Olympic and Paralympic Games, allowing youth to participate for \$10. Waivers are available, ask for details.



DENKER REC. CENTER



Boxing



Youth Co-Ed

Registration Starts

3/03/25



AGES 7-15

\$10

PER CHILD

8 WEEK SESSION

CLASSES BEGIN APR 7TH, 2025

CLASSES ENDS MAY 19TH, 2025

MONDAYS

4PM-5PM

5PM-6PM

DENKER REC CENTER

1550 W. 35TH PL.

LOS ANGELES. CA 90018

SCAN QR
CODE OR
VISIT

laparks.org/reccenter/denker **(323) 733-8367**



Persons with disabilities are encouraged to participate in our classes and programs. Reasonable accommodations may be made with prior arrangement. "Achieving Gender Equity through a continuous commitment to Girls and Women in Sports" This program is subject to cancellation. "PlayLA Youth and Adaptive Sports Program is made possible by the LA28 Olympic and Paralympic Games, allowing youth to participate for \$10. Waivers are available, ask for details.



DENKER REC. CENTER

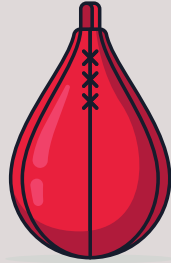
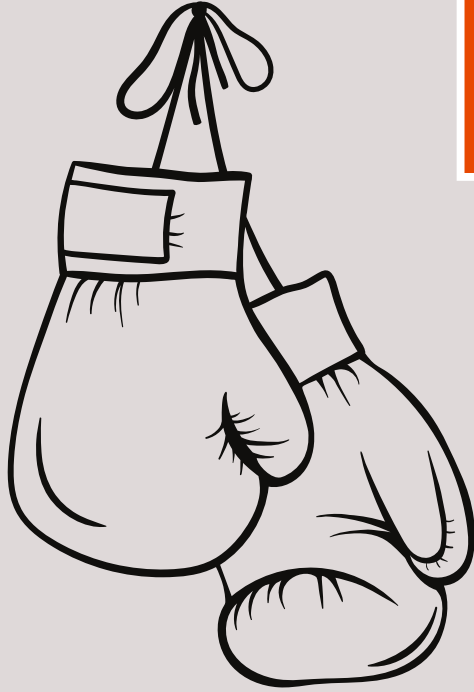


GPLA

Girls Play Los Angeles

Registration Starts
3/03/25

Boxing



AGES 7-15
\$10
PER CHILD

8 WEEK SESSION
CLASSES BEGIN APR 7TH, 2025
CLASSES ENDS MAY 19TH, 2025

MONDAYS
6PM-7PM

DENKER REC CENTER

1550 W. 35TH PL.

LOS ANGELES. CA 90018

(323) 733-8367



SCAN QR
CODE OR
VISIT

laparks.org/reccenter/denker

Persons with disabilities are encouraged to participate in our classes and programs. Reasonable accommodations may be made with prior arrangement. "Achieving Gender Equity through a continuous commitment to Girls and Women in Sports" This program is subject to cancellation. "PlayLA Youth and Adaptive Sports Program is made possible by the LA28 Olympic and Paralympic Games, allowing youth to participate for \$10. Waivers are available, ask for details.



DENKER REC. CENTER

CROCHET



YOUTH CO-ED

Registration Starts
3/03/25



AGES 6-14

\$10

PER CHILD

8 WEEK SESSION

CLASSES BEGIN APR 9TH, 2025

CLASSES ENDS MAY 28, 2025

WEDNESDAYS

4:30PM-5:30PM

DENKER REC CENTER

1550 W. 35TH PL.

LOS ANGELES, CA 90018

(323) 733-8367



SCAN QR
CODE OR
VISIT

laparks.org/reccenter/denker



BALLET

8 WEEK SESSION

DENKER REC. CENTER

1550 W. 35TH PL. LA, CA 90018
OFFICE: (323)733-8367



TUESDAYS

TINY BALLET 5:00PM-5:30PM

BALLET 5:30PM-6:30PM

REGISTRATION:
3/03/25

\$10 PER CHILD



**CLASSES BEGIN
APRIL 8TH, 2025**

**CLASSES END
MAY 27TH, 2025**

AGES 4-6 "TINY BALLET"
AGES 7-12 "BALLET"

YOUTH CO-ED



Persons with disabilities are encouraged to participate in our classes and programs. Reasonable accommodations may be made with prior arrangement. "Achieving Gender Equity through a continuous commitment to Girls and Women in Sports" This program is subject to cancellation. "PlayLA Youth and Adaptive Sports Program is made possible by the LA28 Olympic and Paralympic Games, allowing youth to participate for \$10. Waivers are available, ask for details.



DENKER REC. CENTER



ARTFUL EXPRESSIONS



Registration Starts
3/03/25



8 WEEK SESSION

AGES 5-17

\$10

PER CHILD

CLASSES BEGIN APR 10TH, 2025

CLASSES ENDS MAY 29TH, 2025

THURSDAYS

5:00PM-6:00PM

DENKER REC CENTER

1550 W. 35TH PL.

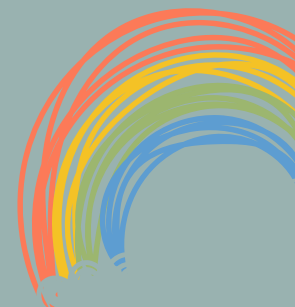
LOS ANGELES. CA 90018

(323) 733-8367



SCAN QR
CODE OR
VISIT

laparks.org/recenter/denker



DENKER REC. CENTER

DANCE



REGISTRATION STARTS
3/03/2025



@DENKERRECREATIONCENTER

AGES 9-17

\$10
PER CHILD

8 WEEK SESSION

FRIDAYS
6PM-7PM

CLASSES BEGIN APRIL 11TH, 2025

CLASSES ENDS MAY 30TH, 2025

DENKER REC CENTER

1550 W. 35TH PL.

LOS ANGELES. CA 90018

(323) 733-8367



SCAN QR
CODE OR
VISIT

laparks.org/reccenter/denker



Persons with disabilities are encouraged to participate in our classes and programs. Reasonable accommodations may be made with prior arrangement. "Achieving Gender Equity through a continuous commitment to Girls and Women in Sports" This program is subject to cancellation. "PlayLA Youth and Adaptive Sports Program is made possible by the LA28 Olympic and Paralympic Games, allowing youth to participate for \$10. Waivers are available, ask for details.

DENKER REC. CENTER



SPRING CAMP



Fee

\$85

Ages

5-12

APR 14th - 18th

PARTICIPANTS MUST BRING THEIR OWN LUNCH

MON - FRI 8:00AM - 6:00PM

**SPORTS, GAMES, ARTS &
CRAFTS + MUCH MORE**

**SNACKS
PROVIDED**



@DENKERRECREATIONCENTER



DENKER RECREATION CENTER

1550 W. 35TH PL., LOS ANGELES. CA 90018

**OFFICE: (323)733-8367 | EMAIL:
DENKER.RECREATIONCENTER@LACITY.ORG**

Persons with disabilities are encouraged to participate in our classes and programs. Reasonable accommodations may be made with prior arrangement. "Achieving Gender Equity through a continuous commitment to Girls and Women in Sports" This program is subject to cancellation.



DENKER REC. CENTER



EGG-CEPTIONAL SPRING EVENT

FREE FOOD, GAMES

MUSIC, PRIZES

EGG HUNT

JUMPERS, KITE FLYING

+ ARTS & CRAFTS

**FREE
ENTRY**

SATURDAY, APRIL 12TH, 2025

11 AM - 2:00 PM

1550 W. 35TH PL., LOS ANGELES. CA 90018

EMAIL: DENKER.RECREATIONCENTER@LACITY.ORG

OFFICE #: (323) 733 - 8367





DENKER REC. CENTER



HUEVO-EXCEPCIONAL EVENTO DE PRIMAVERA

COMIDA GRATIS, JUEGOS, MÚSICA,
PREMIOS, BÚSQUEDA DE HUEVOS,
SALTOS, VUELO DE COMETAS + ARTES
Y MANUALIDADES

**ENTRADA
LIBRE**

**SÁBADO 12 DE ABRIL DE 2025
11:00 A 14:00 HORAS**

1550 W. 35TH PL., LOS ÁNGELES, CA 90018

CORREO ELECTRÓNICO: DENKER.RECREATIONCENTER@LACITY.ORG

OFICINA #: (323) 733 - 8367

Se anima a las personas con discapacidades a participar en nuestras clases y programas. Se pueden realizar adaptaciones razonables con previa solicitud. Las clases y los programas que aparecen en este folleto pueden estar sujetos a cancelación o cambio.





DENKER REC. CENTER



Registration Starts
3/03/25



NIGHT

ADULT VOLLEYBALL

MONDAYS

STARTS/ENDS:
APRIL 7TH - MAY 19TH
2025

AGES: 18+ 6:00PM-9:00PM

DENKER REC

1550 W. 35TH PL.
LOS ANGELES, CA 90018
(323) 733-8367

FEE:

\$10

PER PERSON



SCAN QR
CODE OR
VISIT

@DENKERRECREATIONCENTER

laparks.org/reccenter/denker

Persons with disabilities are encouraged to participate in our classes and programs. Reasonable accommodations may be made with prior arrangement. The classes and programs on this flyer may be subject to cancellation or change.

DENKER REC. CENTER



Registration Starts
3/03/25



ADULT FITNESS

MON & WED

STARTS/ENDS:
MARCH 24TH - MAY 14TH
2025

AGES: 18+ 6:00PM-7:00PM

DENKER REC

1550 W. 35TH PL.
LOS ANGELES, CA 90018
(323) 733-8367

FEE:

FREE



SCAN QR
CODE OR
VISIT

@DENKERRECREATIONCENTER

laparks.org/reccenter/denker

Persons with disabilities are encouraged to participate in our classes and programs. Reasonable accommodations may be made with prior arrangement. The classes and programs on this flyer may be subject to cancellation or change.