



# JUDO

## 8 WEEK SESSION

### DENKER REC. CENTER

1550 W. 35TH PL. LA, CA 90018  
OFFICE: (323)733-8367



TUES & THURS

6:30P-8:30PM

**REGISTRATION:**

**8/26/24**

**\$10** PER CHILD



**CLASSES BEGIN  
OCT 8TH, 2024**

**AGES 5-12**

**AGES VARY BY SITE**

Persons with disabilities are encouraged to participate in our classes and programs. Reasonable accommodations may be made with prior arrangement. "Achieving Gender Equity through a continuous commitment to Girls and Women in Sports" This program is subject to cancellation. "PlayLA Youth and Adaptive Sports Program is made possible by the LA28 Olympic and Paralympic Games, allowing youth to participate for \$10. Waivers are available, ask for details.



VISIT US AT: [LAPARKS.ORG](http://LAPARKS.ORG)



# JUDO

## SESIÓN DE 8 SEMANAS

### DENKER REC. CENTER

1550 W. 35TH PL. LA, CA 90018  
OFFICE: (323)733-8367



MARTES Y JUEVES

6:30PM-8:30PM

**INSCRIPCION:**  
**8/26/24**

**\$10** POR NINO



**LAS CLASES COMIENZAN  
8 DE OCTUBRE DE 2024**

**EDADES 5-12**

**LAS EDADES VARÍAN**

**SEGÚN EL SITIO**

Persons with disabilities are encouraged to participate in our classes and programs. Reasonable accommodations may be made with prior arrangement. "Achieving Gender Equity through a continuous commitment to Girls and Women in Sports" This program is subject to cancellation. "PlayLA Youth and Adaptive Sports Program is made possible by the LA28 Olympic and Paralympic Games, allowing youth to participate for \$10. Waivers are available, ask for details.





# TRACK & FIELD



**Registration Starts**  
**8/26/24**

**AGES 8-15**  
**\$10**  
**PER CHILD**

**Every Thursday**  
**4:00pm - 5:00pm**

**8 WEEK SESSION**

**CLASSES BEGIN OCT 10TH, 2024**

**CLASSES ENDS DEC 5, 2024**

**DENKER REC CENTER**

**1550 W. 35TH PL**

**LOS ANGELES, CA 90018**

**(323) 733-8367**



SCAN QR  
CODE OR  
VISIT

[laparks.org/reccenter/denker](https://laparks.org/reccenter/denker)

Persons with disabilities are encouraged to participate in our classes and programs. Reasonable accommodations may be made with prior arrangement. "Achieving Gender Equity through a continuous commitment to Girls and Women in Sports" This program is subject to cancellation. "PlayLA Youth and Adaptive Sports Program is made possible by the LA28 Olympic and Paralympic Games, allowing youth to participate for \$10. Waivers are available, ask for details.



# TRACK & FIELD



**Comienza el registro**  
**8/26/24**

**Edades 8-15**

**\$10**

**POR NIÑO**

**Todos los jueves**  
**4:00pm - 5:00pm**

## SESIÓN DE 10 SEMANAS

LAS CLASES COMIENZAN EL 10 DE OCTUBRE DE 2024

LAS CLASES TERMINAN EL 10 DE OCTUBRE DE 2024

### DENKER REC CENTER

1550 W. 35TH PL

LOS ANGELES, CA 90018

(323) 733-8367

SCAN QR  
CODE OR  
VISIT

[laparks.org/reccenter/denker](http://laparks.org/reccenter/denker)



Persons with disabilities are encouraged to participate in our classes and programs. Reasonable accommodations may be made with prior arrangement. "Achieving Gender Equity through a continuous commitment to Girls and Women in Sports" This program is subject to cancellation. "PlayLA Youth and Adaptive Sports Program is made possible by the LA28 Olympic and Paralympic Games, allowing youth to participate for \$10. Waivers are available, ask for details.



# DENKER REC. CENTER

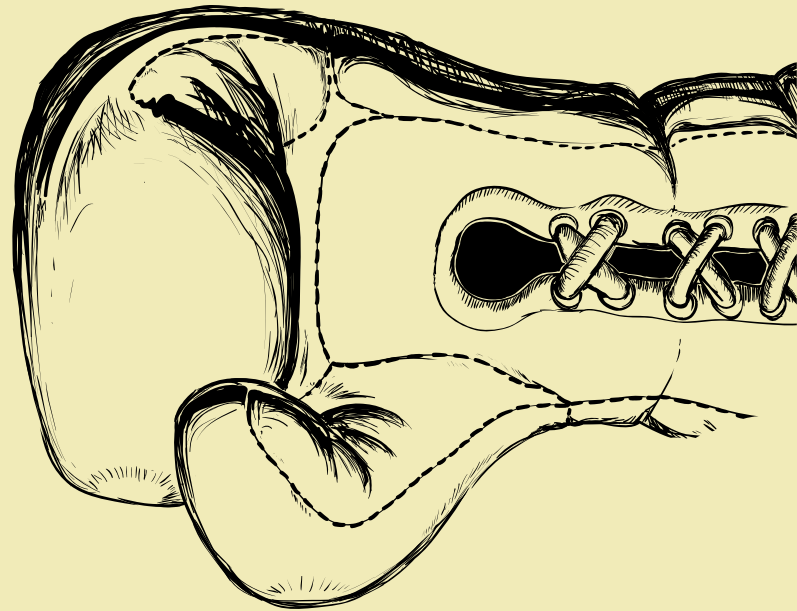
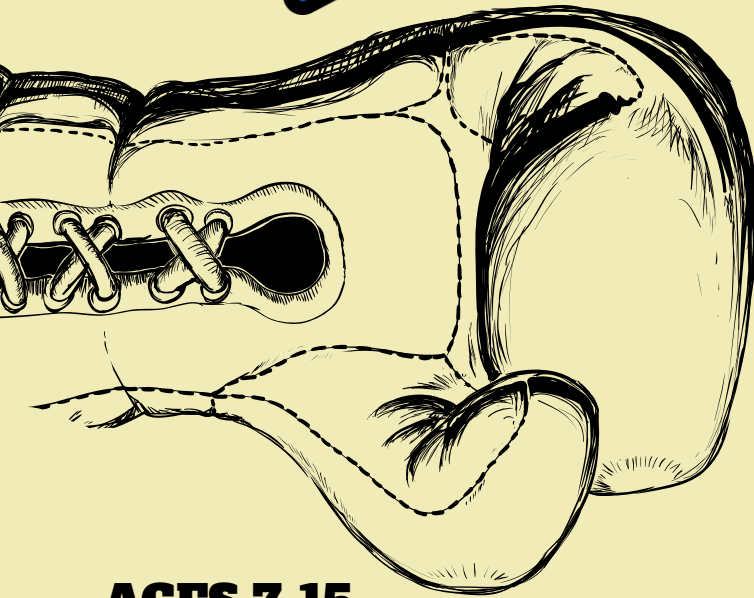


# Boxing

Co-Ed

**Registration Starts**

**8/26/24**



**AGES 7-15**

**\$10**

**PER CHILD**

**8 WEEK SESSION**

**CLASSES BEGIN OCT 7TH, 2024**

**CLASSES ENDS DEC 9, 2024**

**\*NO CLASSES OCT 14 & NOV 11 \***

**MONDAYS**

**4PM-5PM**

**5PM-6PM**

**DENKER REC CENTER**

**1550 W. 35TH PL.**

**LOS ANGELES. CA 90018**

SCAN QR  
CODE OR  
VISIT

[laparks.org/reccenter/denker](http://laparks.org/reccenter/denker) **(323) 733-8367**



Persons with disabilities are encouraged to participate in our classes and programs. Reasonable accommodations may be made with prior arrangement. "Achieving Gender Equity through a continuous commitment to Girls and Women in Sports" This program is subject to cancellation. "PlayLA Youth and Adaptive Sports Program is made possible by the LA28 Olympic and Paralympic Games, allowing youth to participate for \$10. Waivers are available, ask for details.





# DENKER REC. CENTER KICKBALL



YOUTH CO-ED



**Registration Starts**  
**8/26/24**

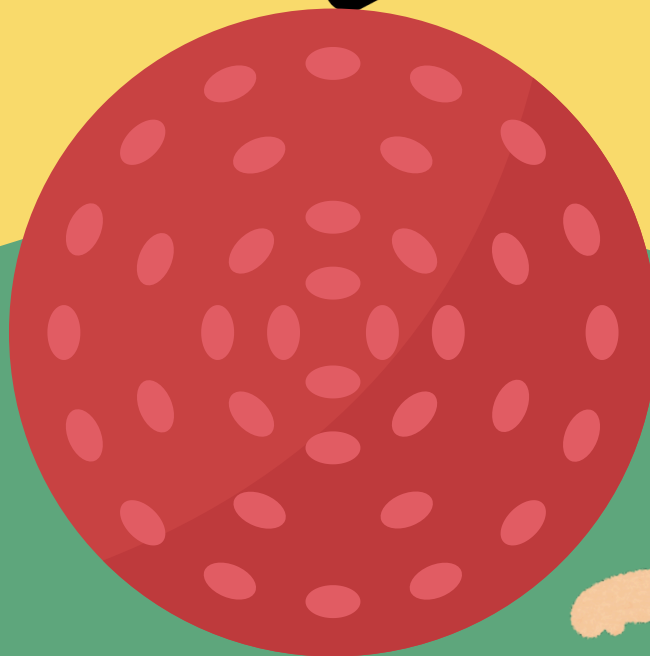
**AGES 6-17**

**\$10**

**PER CHILD**

**MONDAY**

**6PM-7PM**



**8 WEEK SESSION**

**CLASSES BEGIN OCT 7TH, 2024**

**CLASSES ENDS DEC 9TH, 2024**

**\*NO CLASSES OCT 14 & NOV 11 \***

**DENKER REC CENTER**

**1550 W. 35TH PL.**

**LOS ANGELES. CA 90018**

**(323) 733-8367**



SCAN QR  
CODE OR  
VISIT

[laparks.org/reccenter/denker](http://laparks.org/reccenter/denker)

Persons with disabilities are encouraged to participate in our classes and programs. Reasonable accommodations may be made with prior arrangement. "Achieving Gender Equity through a continuous commitment to Girls and Women in Sports" This program is subject to cancellation. "PlayLA Youth and Adaptive Sports Program is made possible by the LA28 Olympic and Paralympic Games, allowing youth to participate for \$10. Waivers are available, ask for details.



# DENKER REC. CENTER

# Color Guard



## 8 WEEK SESSION

### DENKER REC. CENTER

1550 W. 35TH PL. LA, CA 90018  
OFFICE: (323)733-8367



WEDNESDAYS

6:00PM - 7:00PM

### REGISTRATION:

8/26/24



**\$10** PER CHILD

AGES: 9-13



**CLASSES BEGIN  
OCTOBER 9, 2024**

**CLASSES END  
NOV 27TH, 2024**



Persons with disabilities are encouraged to participate in our classes and programs. Reasonable accommodations may be made with prior arrangement. "Achieving Gender Equity through a continuous commitment to Girls and Women in Sports" This program is subject to cancellation.

"PlayLA Youth and Adaptive Sports Program is made possible by the LA28 Olympic and Paralympic Games, allowing youth to participate for \$10. Waivers are available, ask for details.

DENKER REC. CENTER



# BASKETBALL



## Skills

**\$10**

PER PERSON

YOUTH AGE

**5-12**

**OCT 12TH - NOV 30**

@DENKERRECREATIONCENTER

**SATURDAYS**

**AGE 5-8: 10AM - 11AM**

**AGE 9-12: 11AM - 12PM**

**DENKER REC**

1550 W. 35TH PL.

LOS ANGELES, CA 90018

(323) 733-8367



SCAN QR  
CODE OR  
VISIT

[laparks.org/recenter/denker](https://laparks.org/recenter/denker)

Persons with disabilities are encouraged to participate in our classes and programs. Reasonable accommodations may be made with prior arrangement. "Achieving Gender Equity through a continuous commitment to Girls and Women in Sports" This program is subject to cancellation.

"PlayLA Youth and Adaptive Sports Program is made possible by the LA28 Olympic and Paralympic Games, allowing youth to participate for \$10. Waivers are available, ask for details.





# FALL CO-ED VOLLEYBALL CLINIC

Fee  
**\$10**  
Per session

Ages  
**9-12**

**Oct 5, 12 & 19th**

<b>Session #1</b>	<b>Oct 5th</b>	<b>10am-12pm</b>
<b>Session #2</b>	<b>Oct 12th</b>	<b>10am-12pm</b>
<b>Session #3</b>	<b>Oct 19th</b>	<b>10am-12pm</b>



SCAN QR  
CODE OR  
VISIT

@DENKERRECREATIONCENTER

[LAPARKS.ORG/RECCENTER/Denker](http://LAPARKS.ORG/RECCENTER/Denker)

## DENKER. RECREATION CENTER

1550 W. 35TH PL. LA, CA 90018

OFFICE: (323)733-8367 | EMAIL:  
DENKER.RECREATIONCENTER@LACITY.ORG

Persons with disabilities are encouraged to participate in our classes and programs. Reasonable accommodations may be made with prior arrangement. "Achieving Gender Equity through a continuous commitment to Girls and Women in Sports" This program is subject to cancellation.



City Of Los Angeles Department Of Recreation & Parks



# FALL CO-ED FLAG FOOTBALL CLINIC

Fee  
**\$10**  
Per session

Ages  
**9-12**

## Oct 5, 12 & 19th

<b>Session #1</b>	<b>Oct 5th</b>	<b>10am-12pm</b>
<b>Session #2</b>	<b>Oct 12th</b>	<b>10am-12pm</b>
<b>Session #3</b>	<b>Oct 19th</b>	<b>10am-12pm</b>



SCAN QR  
CODE OR  
VISIT

@DENKERRECREATIONCENTER

[LAPARKS.ORG/RECCENTER/Denker](http://LAPARKS.ORG/RECCENTER/Denker)

## DENKER. RECREATION CENTER

1550 W. 35TH PL. LA, CA 90018

OFFICE: (323)733-8367 | EMAIL:  
DENKER.RECREATIONCENTER@LACITY.ORG

Persons with disabilities are encouraged to participate in our classes and programs. Reasonable accommodations may be made with prior arrangement. "Achieving Gender Equity through a continuous commitment to Girls and Women in Sports" This program is subject to cancellation.





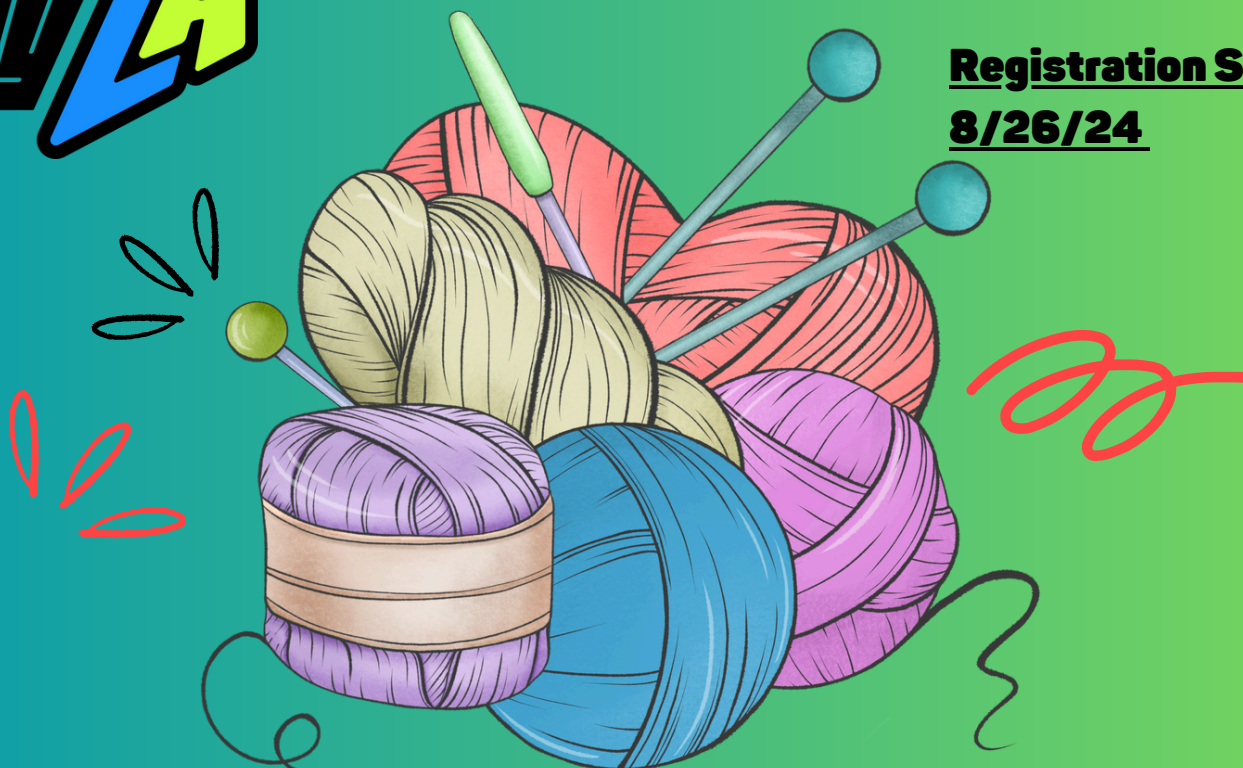
# DENKER REC. CENTER

# CROCHET



YOUTH CO-ED

**Registration Starts**  
**8/26/24**



**AGES 6-14**

**\$10**

**PER CHILD**

**8 WEEK SESSION**

**CLASSES BEGIN OCT 9TH, 2024**

**CLASSES ENDS DEC 9, 2024**

**WEDNESDAYS**

**4:30PM-5:30PM**

**DENKER REC CENTER**

**1550 W. 35TH PL.**

**LOS ANGELES. CA 90018**

**(323) 733-8367**



SCAN QR  
CODE OR  
VISIT

[laparks.org/reccenter/denker](https://laparks.org/reccenter/denker)

Persons with disabilities are encouraged to participate in our classes and programs. Reasonable accommodations may be made with prior arrangement. "Achieving Gender Equity through a continuous commitment to Girls and Women in Sports" This program is subject to cancellation.

# DENKER REC. CENTER

# DANCE



**REGISTRATION STARTS**

**8/26/2024**



@DENKERRECREATIONCENTER

## 8 WEEK SESSION

AGES 7-12

# \$10

PER CHILD

CLASSES BEGIN OCT 9TH, 2024

CLASSES ENDS DEC 9TH, 2024

WEDNESDAYS

5:00PM-6:00PM

## DENKER REC CENTER

1550 W. 35TH PL.

LOS ANGELES. CA 90018

(323) 733-8367

SCAN QR  
CODE OR  
VISIT

[laparks.org/recenter/denker](http://laparks.org/recenter/denker)



Persons with disabilities are encouraged to participate in our classes and programs. Reasonable accommodations may be made with prior arrangement. "Achieving Gender Equity through a continuous commitment to Girls and Women in Sports" This program is subject to cancellation. "PlayLA Youth and Adaptive Sports Program is made possible by the LA28 Olympic and Paralympic Games, allowing youth to participate for \$10.