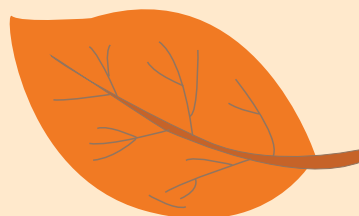


DENKER REC. CENTER



Welcome

FALL



2024

DENKER RECREATION CENTER

1550 W. 35TH PL.

LOS ANGELES, CA 90018

PHONE: (323) 733-8367

EMAIL: DENKER.RECREATIONCENTER@LACITY.ORG



DENKER REC. CENTER

1550 W. 35th Pl

Los Angeles, CA 90018

Office: (323) 733-8367

Email: Denker.RecreationCenter@lacity.org



AFTERSCHOOL CLUB



ONE TIME REGISTRATION FEE: \$10

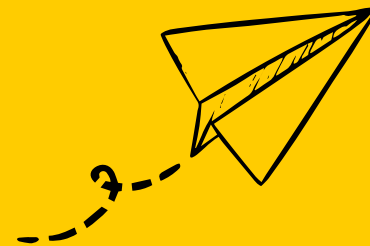
WEEKLY FEE: \$25 PER CHILD

WE PICK UP FROM LOCAL SCHOOLS

MONDAY-FRIDAY

GRADES: K-6TH

2:00PM - 6:00PM



WHAT WE PROVIDE

- Homework Help
- Enrichment Program
- Tutoring
- Recreational Activities
- Snack





DENKER REC. CENTER



REGISTRATION STARTS

8/5/2024

YOUTH CO-ED SOCCER

FEE INCLUDES: UNIFORM,
AWARDS AND OFFICIALS

\$ 1 0

YOUTH CO-ED SOCCER

FEE INCLUDES: UNIFORM,
AWARDS AND OFFICIALS

\$ 1 0



DIVISION

PeeWee
Rookie
Minor/Major
Junior

AGES

5yr - 6yr old
7yr - 8yr old
9yr - 12yr old
13yr - 15yr old

TIME OF GAME

Saturdays - TBA
Saturdays - TBA
Saturdays - TBA
Saturdays - TBA

FIRST GAME STARTS: 10/5/24

LAST GAME ENDS 11/23/24

1550 W. 35th PL LA, CA 90018

Phone #: (323) 733-8367

Denker.RecreationCenter@LACity.org



SCAN QR
CODE OR
VISIT

Register
here

LAPARKS.ORG/RECCENTER/Denker

NO REFUNDS WILL BE GRANTED UNLESS PROGRAM IS CANCELED

Persons with disabilities are encouraged to participate in our classes and programs. Reasonable accommodations may be made with prior arrangement. "Achieving Gender Equity through a continuous commitment to Girls and Women in Sports" This program is subject to cancellation.

"PlayLA Youth and Adaptive Sports Program is made possible by the LA28 Olympic and Paralympic Games, allowing youth to participate for \$10. Waivers are available, ask for details.



DENKER REC. CENTER



PLAYLA

COMIENZA EL REGISTRO

8/5/2024

FÚTBOL MIXTO JUVENIL

Precio incluye: uniforme,
premios y funcionarios

\$ 10



FÚTBOL MIXTO JUVENIL

Precio incluye: uniforme,
premios y funcionarios

\$ 10

PARTE

Enano
Novato
Menor/Major
Junior

EADES

5 años - 6 años
7 años - 8 años
9 años - 12 años
13 años - 15 años

TIEMPO DE JUEGOS

Sábado - TBA
Sábado - TBA
Sábado - TBA
Sábado - TBA

**El primer juego comienza:
5 de Octubre de 2024**

**El último juego termina:
11 de Noviembre de 2024**

1550 W. 35th PL LA, CA 90018
Phone #: (323) 733-8367
Denker.RecreationCenter@LACity.org



SCAN QR
CODE OR
VISIT

Register
here

LAPARKS.ORG/RECCENTER/Denker

NO REFUNDS WILL BE GRANTED UNLESS PROGRAM IS CANCELED

Persons with disabilities are encouraged to participate in our classes and programs. Reasonable accommodations may be made with prior arrangement. "Achieving Gender Equity through a continuous commitment to Girls and Women in Sports" This program is subject to cancellation.

"PlayLA Youth and Adaptive Sports Program is made possible by the LA28 Olympic and Paralympic Games, allowing youth to participate for \$10. Waivers are available, ask for details.

DENKER REC. CENTER



GPLA

Girls Play Los Angeles



REGISTRATION STARTS

8/5/2024

SOCCER



LEAGUE STARTS
OCTOBER 5, 2024

LEAGUE ENDS
NOV 23, 2024

FEE
\$10

GAME DAYS
SATURDAYS
TBA



DIVISION

MINOR
MAJOR
JUNIOR

AGES

8-10
11-12
13-15

GAME TIME

SATURDAYS - TBA
SATURDAYS - TBA
SATURDAYS - TBA

1550 W. 35th PL LA, CA 90018

Phone #: (323) 733-8367

Denker.RecreationCenter@LACity.org



SCAN QR
CODE OR
VISIT

Register
here

LAPARKS.ORG/RECCENTER/Denker

NO REFUNDS WILL BE GRANTED UNLESS PROGRAM IS CANCELED

Persons with disabilities are encouraged to participate in our classes and programs. Reasonable accommodations may be made with prior arrangement. "Achieving Gender Equity through a continuous commitment to Girls and Women in Sports" This program is subject to cancellation.

"PlayLA Youth and Adaptive Sports Program is made possible by the LA28 Olympic and Paralympic Games, allowing youth to participate for \$10. Waivers are available, ask for details.

DENKER REC. CENTER



GPLA

Girls Play Los Angeles



COMIENZA EL REGISTRO

8/5/2024

FÚTBOL

COMIENZA LA LIGA

5 DE OCTUBRE DE 2024

LA LIGA TERMINA

23 DE NOVIEMBRE DE 2024

TARIFA

\$10

DÍAS DE JUEGO

SÁBADOS

TBA



DIVISIÓN

**MENOR
ESPECIALIDAD
JÓVENES**

EDADES

**8-10
11-12
13-15**

TIEMPO DE JUEGO

**Sábado - TBA
Sábado - TBA
Sábado - TBA**



1550 W. 35th PL LA, CA 90018

Phone #: (323) 733-8367

Denker.RecreationCenter@LACity.org



SCAN QR
CODE OR
VISIT

Register
here

LAPARKS.ORG/RECCENTER/Denker

NO REFUNDS WILL BE GRANTED UNLESS PROGRAM IS CANCELED

Persons with disabilities are encouraged to participate in our classes and programs. Reasonable accommodations may be made with prior arrangement. "Achieving Gender Equity through a continuous commitment to Girls and Women in Sports" This program is subject to cancellation.

"PlayLA Youth and Adaptive Sports Program is made possible by the LA28 Olympic and Paralympic Games, allowing youth to participate for \$10. Waivers are available, ask for details.



GPLA

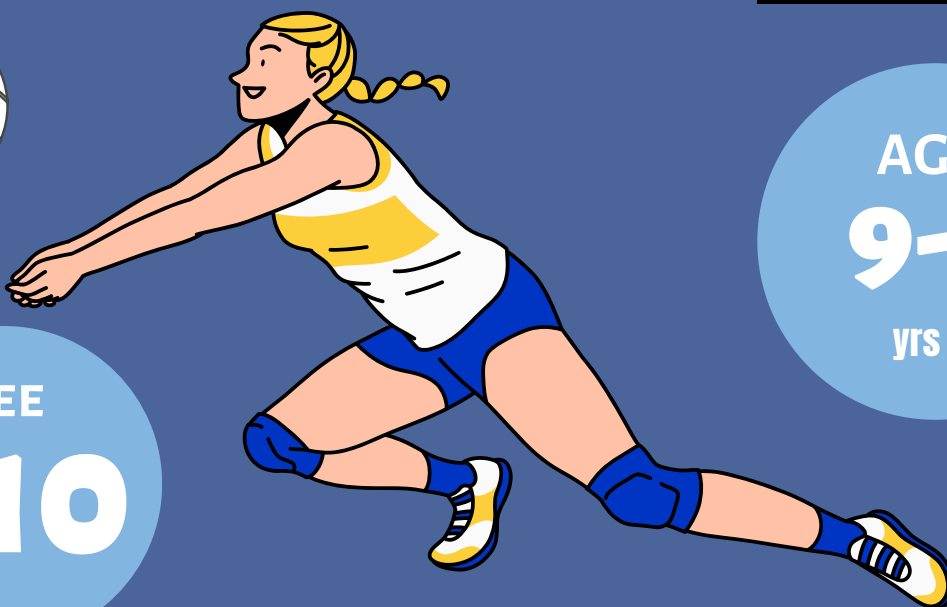
Girls Play Los Angeles



VOLLEYBALL



REGISTRATION BEGINS
8/5/2024



AGES
9-15
yrs old

FEE
\$10

DIVISION

- MINORS
- MAJORS
- JUNIORS

AGES

- 9yr-10yr old
- 11yr - 12yr old
- 13yr - 15yr old

GAME TIMES

- WEDNESDAYS - TBA
- WEDNESDAYS - TBA
- WEDNESDAYS - TBA



DENKER REC

1550 W. 35th Place
 Los Angeles, CA 90018
 Number: (323) 733-8367 |
 Email: Denker.RecreationCenter@lacity.org



LEAGUE STARTS:
10/05/24

LEAGUE ENDS:
11/23/24

Persons with disabilities are encouraged to participate in our classes and programs. Reasonable accommodations may be made with prior arrangement. "Achieving Gender Equity through a continuous commitment to Girls and Women in Sports" This program is subject to cancellation.





GPLA

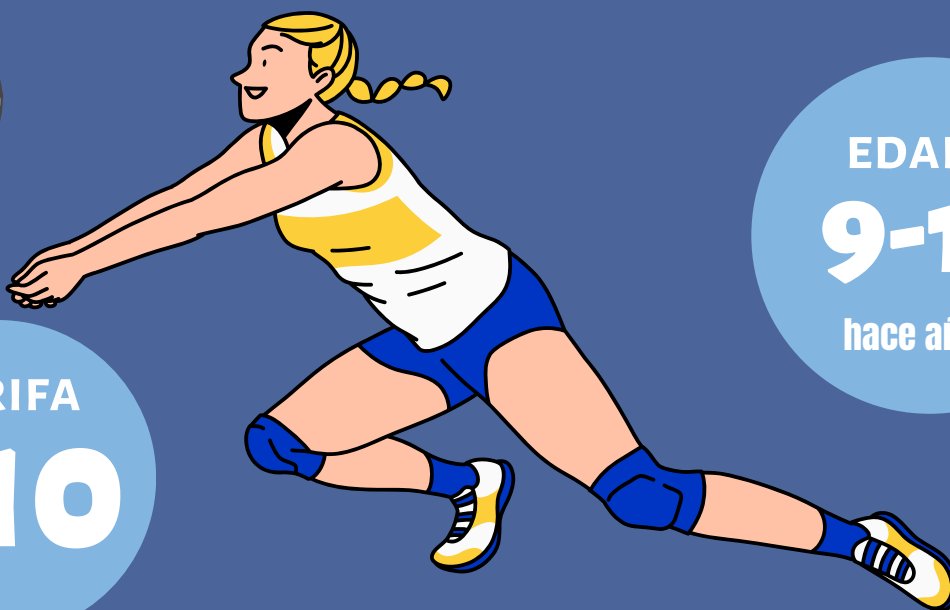
Girls Play Los Angeles



VÓLEIBOL



COMIENZA EL REGISTRO
8/5/2024



EDADES
9-15
hace años

TARIFA
\$10

DIVISIÓN

MENOR
ESPECIALIDAD
JÓVENES

EDADES

9 años - 10 años
11 años - 12 años
13 años - 15 años

TIEMPO DE JUEGO

WEDNESDAYS - TBA
WEDNESDAYS - TBA
WEDNESDAYS - TBA



DENKER REC

1550 W. 35th Place
Los Angeles, CA 90018
Number: (323) 733-8367 |
Email: Denker.RecreationCenter@lacity.org



COMIENZA LA LIGA:
10/05/24

LA LIGA TERMINA:
11/23/24

Persons with disabilities are encouraged to participate in our classes and programs. Reasonable accommodations may be made with prior arrangement. "Achieving Gender Equity through a continuous commitment to Girls and Women in Sports" This program is subject to cancellation.





JUDO

8 WEEK SESSION

DENKER REC. CENTER

1550 W. 35TH PL. LA, CA 90018
OFFICE: (323)733-8367



TUES & THURS

6:30P-8:30PM

REGISTRATION:

8/26/24

\$10 PER CHILD



**CLASSES BEGIN
OCT 8TH, 2024**

AGES 5-12

AGES VARY BY SITE

Persons with disabilities are encouraged to participate in our classes and programs. Reasonable accommodations may be made with prior arrangement. "Achieving Gender Equity through a continuous commitment to Girls and Women in Sports" This program is subject to cancellation. "PlayLA Youth and Adaptive Sports Program is made possible by the LA28 Olympic and Paralympic Games, allowing youth to participate for \$10. Waivers are available, ask for details.



VISIT US AT: LAPARKS.ORG



JUDO

SESIÓN DE 8 SEMANAS

DENKER REC. CENTER

1550 W. 35TH PL. LA, CA 90018
OFFICE: (323)733-8367



MARTES Y JUEVES

6:30PM-8:30PM

INSCRIPCION:
8/26/24

\$10 POR NINO



**LAS CLASES COMIENZAN
8 DE OCTUBRE DE 2024**

EDADES 5-12

LAS EDADES VARÍAN

SEGÚN EL SITIO

Persons with disabilities are encouraged to participate in our classes and programs. Reasonable accommodations may be made with prior arrangement. "Achieving Gender Equity through a continuous commitment to Girls and Women in Sports" This program is subject to cancellation. "PlayLA Youth and Adaptive Sports Program is made possible by the LA28 Olympic and Paralympic Games, allowing youth to participate for \$10. Waivers are available, ask for details.





TRACK & FIELD



Registration Starts
8/26/24

AGES 8-15
\$10
PER CHILD

Every Thursday
4:00pm - 5:00pm

8 WEEK SESSION

CLASSES BEGIN OCT 10TH, 2024

CLASSES ENDS DEC 5, 2024

DENKER REC CENTER

1550 W. 35TH PL

LOS ANGELES, CA 90018

(323) 733-8367

SCAN QR
CODE OR
VISIT

laparks.org/reccenter/denker



Persons with disabilities are encouraged to participate in our classes and programs. Reasonable accommodations may be made with prior arrangement. "Achieving Gender Equity through a continuous commitment to Girls and Women in Sports" This program is subject to cancellation. "PlayLA Youth and Adaptive Sports Program is made possible by the LA28 Olympic and Paralympic Games, allowing youth to participate for \$10. Waivers are available, ask for details.



TRACK & FIELD



Comienza el registro
8/26/24

Edades 8-15

\$10
POR NIÑO

Todos los jueves
4:00pm - 5:00pm

SESIÓN DE 10 SEMANAS

LAS CLASES COMIENZAN EL 10 DE OCTUBRE DE 2024

LAS CLASES TERMINAN EL 10 DE OCTUBRE DE 2024

DENKER REC CENTER

1550 W. 35TH PL

LOS ANGELES, CA 90018

(323) 733-8367

SCAN QR
CODE OR
VISIT

laparks.org/reccenter/denker



Persons with disabilities are encouraged to participate in our classes and programs. Reasonable accommodations may be made with prior arrangement. "Achieving Gender Equity through a continuous commitment to Girls and Women in Sports" This program is subject to cancellation. "PlayLA Youth and Adaptive Sports Program is made possible by the LA28 Olympic and Paralympic Games, allowing youth to participate for \$10. Waivers are available, ask for details.



DENKER REC. CENTER

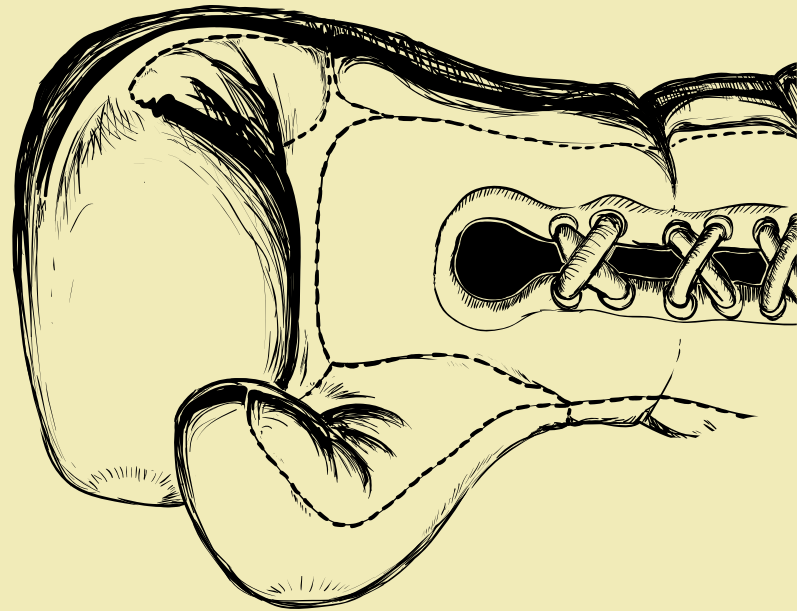


Boxing

Co-Ed

Registration Starts

8/26/24



AGES 7-15

\$10

PER CHILD

8 WEEK SESSION

CLASSES BEGIN OCT 7TH, 2024

CLASSES ENDS DEC 9, 2024

***NO CLASSES OCT 14 & NOV 11 ***

MONDAYS

4PM-5PM

5PM-6PM

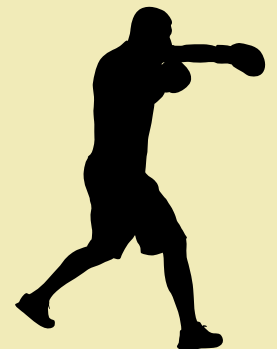
DENKER REC CENTER

1550 W. 35TH PL.

LOS ANGELES. CA 90018

SCAN QR
CODE OR
VISIT

laparks.org/reccenter/denker **(323) 733-8367**



Persons with disabilities are encouraged to participate in our classes and programs. Reasonable accommodations may be made with prior arrangement. "Achieving Gender Equity through a continuous commitment to Girls and Women in Sports" This program is subject to cancellation. "PlayLA Youth and Adaptive Sports Program is made possible by the LA28 Olympic and Paralympic Games, allowing youth to participate for \$10. Waivers are available, ask for details.



DENKER REC. CENTER

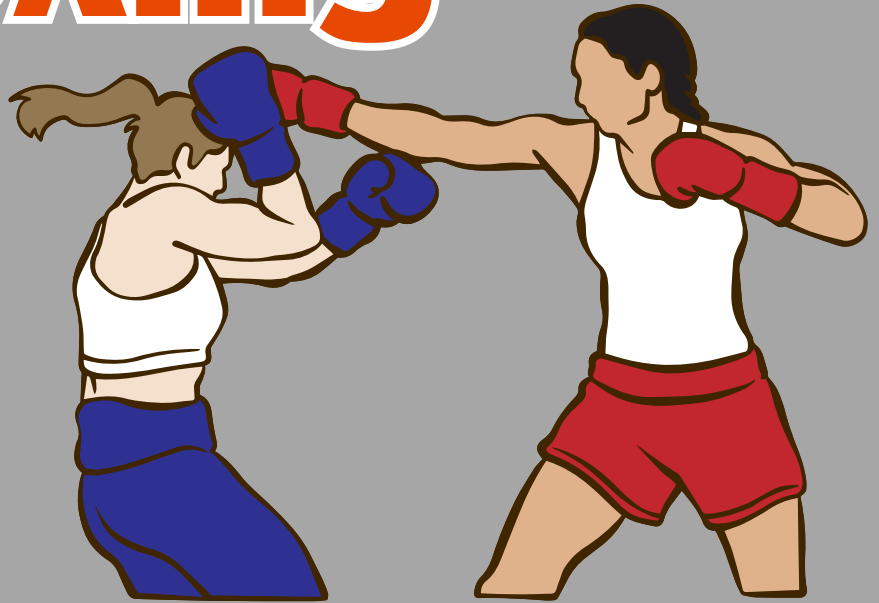
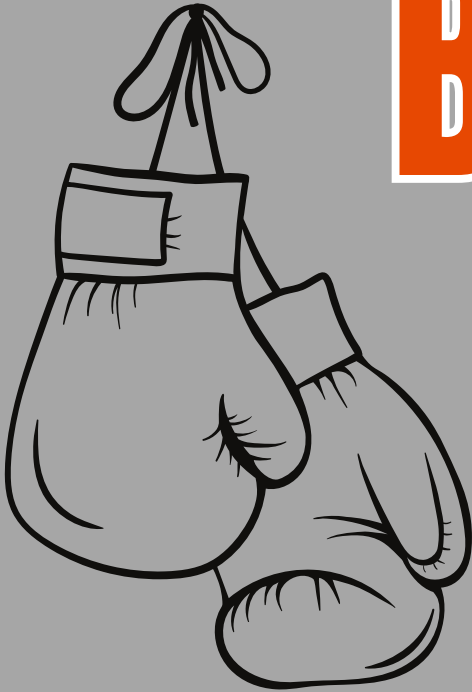


GPLA

Girls Play Los Angeles

Boxing

Registration Starts
8/26/24



AGES 7-15

\$10

PER CHILD

8 WEEK SESSION

CLASSES BEGIN OCT 7TH, 2024

CLASSES ENDS DEC 9, 2024

***NO CLASSES OCT 14 & NOV 11 ***

MONDAYS

6PM-7PM

DENKER REC CENTER

1550 W. 35TH PL.

LOS ANGELES. CA 90018

(323) 733-8367



SCAN QR
CODE OR
VISIT

laparks.org/reccenter/denker

Persons with disabilities are encouraged to participate in our classes and programs. Reasonable accommodations may be made with prior arrangement. "Achieving Gender Equity through a continuous commitment to Girls and Women in Sports" This program is subject to cancellation. "PlayLA Youth and Adaptive Sports Program is made possible by the LA28 Olympic and Paralympic Games, allowing youth to participate for \$10. Waivers are available, ask for details.



DENKER REC. CENTER KICKBALL



YOUTH CO-ED



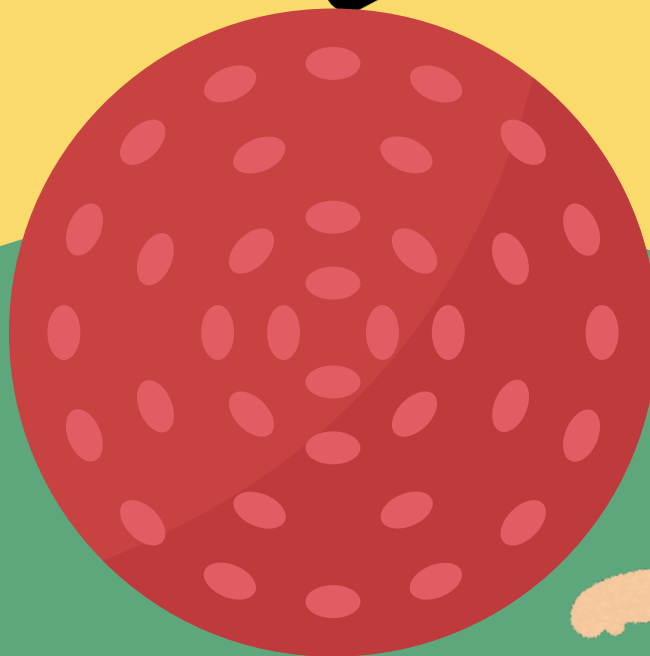
Registration Starts
8/26/24

AGES 6-17

\$10

PER CHILD

MONDAY
6PM-7PM



8 WEEK SESSION

CLASSES BEGIN OCT 7TH, 2024

CLASSES ENDS DEC 9TH, 2024

***NO CLASSES OCT 14 & NOV 11 ***

DENKER REC CENTER

1550 W. 35TH PL.

LOS ANGELES. CA 90018

(323) 733-8367



SCAN QR
CODE OR
VISIT

laparks.org/reccenter/denker

Persons with disabilities are encouraged to participate in our classes and programs. Reasonable accommodations may be made with prior arrangement. "Achieving Gender Equity through a continuous commitment to Girls and Women in Sports" This program is subject to cancellation. "PlayLA Youth and Adaptive Sports Program is made possible by the LA28 Olympic and Paralympic Games, allowing youth to participate for \$10. Waivers are available, ask for details.



BALLET

8 WEEK SESSION

DENKER REC. CENTER

1550 W. 35TH PL. LA, CA 90018
OFFICE: (323)733-8367



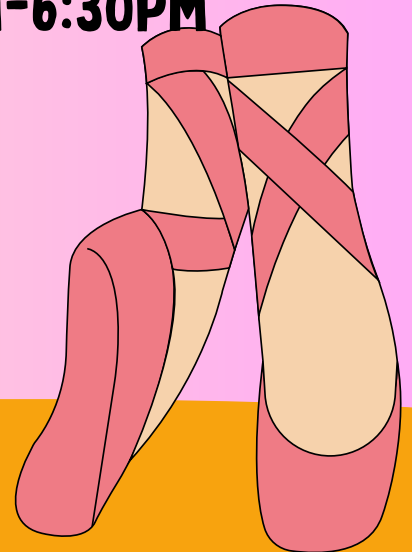
TUESDAYS

TINY BALLET 5:00PM-6:00PM

BALLET 5:30PM-6:30PM

REGISTRATION:
8/26/24

\$10 PER CHILD



**CLASSES BEGIN
OCT 8TH, 2024**

**CLASSES END
NOV 26TH, 2024**

AGES 4-6 "TINY BALLET"
AGES 7-12 "BALLET"



Persons with disabilities are encouraged to participate in our classes and programs. Reasonable accommodations may be made with prior arrangement. "Achieving Gender Equity through a continuous commitment to Girls and Women in Sports" This program is subject to cancellation.

"PlayLA Youth and Adaptive Sports Program is made possible by the LA28 Olympic and Paralympic Games, allowing youth to participate for \$10. Waivers are available, ask for details.



DENKER REC. CENTER

Color Guard



8 WEEK SESSION

DENKER REC. CENTER

1550 W. 35TH PL. LA, CA 90018
OFFICE: (323)733-8367



WEDNESDAYS

6:00PM - 7:00PM

REGISTRATION:

8/26/24



\$10 PER CHILD

AGES: 9-13



**CLASSES BEGIN
OCTOBER 9, 2024**

**CLASSES END
NOV 27TH, 2024**



Persons with disabilities are encouraged to participate in our classes and programs. Reasonable accommodations may be made with prior arrangement. "Achieving Gender Equity through a continuous commitment to Girls and Women in Sports" This program is subject to cancellation.

"PlayLA Youth and Adaptive Sports Program is made possible by the LA28 Olympic and Paralympic Games, allowing youth to participate for \$10. Waivers are available, ask for details.

DENKER REC. CENTER



BASKETBALL



Skills



\$10 PER PERSON	YOUTH AGE 5-12	OCT 9TH - NOV 27
---------------------------	--------------------------	-------------------------

@DENKERRECREATIONCENTER

WEDNESDAYS

5PM - 6PM



DENKER REC

1550 W. 35TH PL.
LOS ANGELES, CA 90018
(323) 733-8367



SCAN QR
CODE OR
VISIT

laparks.org/recenter/denker

Persons with disabilities are encouraged to participate in our classes and programs. Reasonable accommodations may be made with prior arrangement. "Achieving Gender Equity through a continuous commitment to Girls and Women in Sports" This program is subject to cancellation. "PlayLA Youth and Adaptive Sports Program is made possible by the LA28 Olympic and Paralympic Games, allowing youth to participate for \$10. Waivers are available, ask for details.

DENKER REC. CENTER



BASKETBALL



Skills

\$10

PER PERSON

YOUTH AGE

5-12

OCT 12TH - NOV 30

@DENKERRECREATIONCENTER

SATURDAYS

AGE 5-8: 10AM - 11AM

AGE 9-12: 11AM - 12PM



DENKER REC

1550 W. 35TH PL.
LOS ANGELES, CA 90018
(323) 733-8367



SCAN QR
CODE OR
VISIT

laparks.org/recenter/denker

Persons with disabilities are encouraged to participate in our classes and programs. Reasonable accommodations may be made with prior arrangement. "Achieving Gender Equity through a continuous commitment to Girls and Women in Sports" This program is subject to cancellation. "PlayLA Youth and Adaptive Sports Program is made possible by the LA28 Olympic and Paralympic Games, allowing youth to participate for \$10. Waivers are available, ask for details.

City Of Los Angeles Department Of Recreation & Parks



FALL CO-ED VOLLEYBALL CLINIC

Fee
\$10
Per session

Ages
9-12

Oct 5, 12 & 19th

Session #1	Oct 5th	10am-12pm
Session #2	Oct 12th	10am-12pm
Session #3	Oct 19th	10am-12pm

@DENKERRECREATIONCENTER



SCAN QR
CODE OR
VISIT

LAPARKS.ORG/RECCENTER/Denker

DENKER. RECREATION CENTER

1550 W. 35TH PL. LA, CA 90018

OFFICE: (323)733-8367 | EMAIL:
DENKER.RECREATIONCENTER@LACITY.ORG

Persons with disabilities are encouraged to participate in our classes and programs. Reasonable accommodations may be made with prior arrangement. "Achieving Gender Equity through a continuous commitment to Girls and Women in Sports" This program is subject to cancellation.



City Of Los Angeles Department Of Recreation & Parks



FALL CO-ED FLAG FOOTBALL CLINIC

Fee
\$10
Per session

Ages
9-12

Oct 5, 12 & 19th

Session #1	Oct 5th	10am-12pm
Session #2	Oct 12th	10am-12pm
Session #3	Oct 19th	10am-12pm



SCAN QR
CODE OR
VISIT

@DENKERRECREATIONCENTER

LAPARKS.ORG/RECCENTER/Denker

DENKER. RECREATION CENTER

1550 W. 35TH PL. LA, CA 90018

OFFICE: (323)733-8367 | EMAIL:
DENKER.RECREATIONCENTER@LACITY.ORG

Persons with disabilities are encouraged to participate in our classes and programs. Reasonable accommodations may be made with prior arrangement. "Achieving Gender Equity through a continuous commitment to Girls and Women in Sports" This program is subject to cancellation.



City Of Los Angeles Department Of Recreation & Parks



GPLA

Girls Play Los Angeles



FALL VOLLEYBALL CLINIC

Fee
\$10
Per session

Ages
9-12

Oct 5, 12 & 19th

Session #1

Oct 5th

3pm-5pm

Session #2

Oct 12th

3pm-5pm

Session #3

Oct 19th

1pm-3pm

@DENKERRECREATIONCENTER



SCAN QR
CODE OR
VISIT

LAPARKS.ORG/RECCENTER/Denker

DENKER. RECREATION CENTER

1550 W. 35TH PL. LA, CA 90018

OFFICE: (323)733-8367 | EMAIL:
DENKER.RECREATIONCENTER@LACITY.ORG

Persons with disabilities are encouraged to participate in our classes and programs. Reasonable accommodations may be made with prior arrangement. "Achieving Gender Equity through a continuous commitment to Girls and Women in Sports" This program is subject to cancellation.



City Of Los Angeles Department Of Recreation & Parks



FALL FLAG FOOTBALL CLINIC

Fee
\$10
Per session

Ages
9-12

Oct 5, 12 & 19th

Session #1	Oct 5th	12pm-2pm
Session #2	Oct 12th	10am-12pm
Session #3	Oct 19th	12pm-2pm



SCAN QR
CODE OR
VISIT

@DENKERRECREATIONCENTER

LAPARKS.ORG/RECCENTER/Denker

DENKER. RECREATION CENTER

1550 W. 35TH PL. LA, CA 90018

OFFICE: (323)733-8367 | EMAIL:
DENKER.RECREATIONCENTER@LACITY.ORG

Persons with disabilities are encouraged to participate in our classes and programs. Reasonable accommodations may be made with prior arrangement. "Achieving Gender Equity through a continuous commitment to Girls and Women in Sports" This program is subject to cancellation.





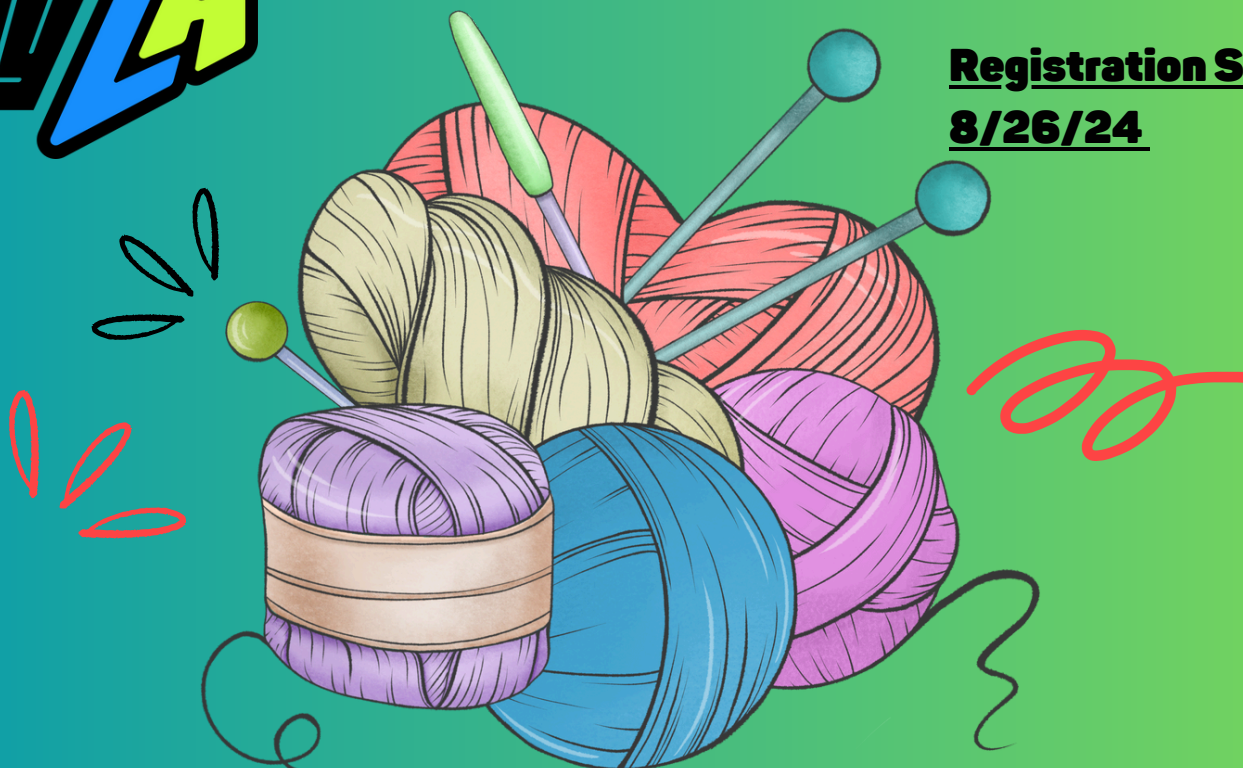
DENKER REC. CENTER

CROCHET



YOUTH CO-ED

Registration Starts
8/26/24



AGES 6-14

\$10

PER CHILD

8 WEEK SESSION

CLASSES BEGIN OCT 9TH, 2024

CLASSES ENDS DEC 9, 2024

WEDNESDAYS

4:30PM-5:30PM

DENKER REC CENTER

1550 W. 35TH PL.

LOS ANGELES. CA 90018

(323) 733-8367



SCAN QR
CODE OR
VISIT

laparks.org/reccenter/denker

Persons with disabilities are encouraged to participate in our classes and programs. Reasonable accommodations may be made with prior arrangement. "Achieving Gender Equity through a continuous commitment to Girls and Women in Sports" This program is subject to cancellation.

DENKER REC. CENTER

DANCE



REGISTRATION STARTS

8/26/2024



@DENKERRECREATIONCENTER

8 WEEK SESSION

AGES 7-12

\$10

PER CHILD

CLASSES BEGIN OCT 9TH, 2024

CLASSES ENDS DEC 9TH, 2024

WEDNESDAYS

5:00PM-6:00PM

DENKER REC CENTER

1550 W. 35TH PL.

LOS ANGELES. CA 90018

(323) 733-8367

SCAN QR
CODE OR
VISIT

laparks.org/reccenter/denker



Persons with disabilities are encouraged to participate in our classes and programs. Reasonable accommodations may be made with prior arrangement. "Achieving Gender Equity through a continuous commitment to Girls and Women in Sports" This program is subject to cancellation. "PlayLA Youth and Adaptive Sports Program is made possible by the LA28 Olympic and Paralympic Games, allowing youth to participate for \$10.



FREE CLASSES



DENKER RECREATION CENTER
 1550 W. 35th Pl. Los Angeles, CA 90018
 Office #: (323) 733-8367

Last day of registration is October 1st, 2024. Registration forms will not be accepted afterwards

SEPT 18TH 2024 THROUGH DEC 4TH, 2024
NO CLASS OCT 30TH & NOV 27TH

10 WEEK PROGRAMS

Activity/ Description:	Day:	Time:	Ages:
UKULELE 9/18 - 12/4	Wednes days	4:00pm, 4:30pm	6-8
GUITAR 9/18 - 12/24	Wednes days	5:00pm, 5:30pm 6:00pm, 6:30pm	9-15

Activities may be subject to change.

Persons with disabilities are encouraged to participate in our programs.
 Reasonable accommodations will be made with prior arrangements.



DENKER REC. CENTER

HALLOWEEN

ZOMBIE

APOCALYPSE

OCTOBER 26, 2024
12PM - 4PM

FREE
TO PUBLIC

FREE
ENTRY

FREE FOOD, CANDY,
GAMES, PRIZES,
MAZE & MUCH MORE



1550 W. 35th Pl., Los Angeles. CA 90018

Office: (323) 733-8367

Email: Denker.RecreationCenter@lacity.org

@DENKERRECREATIONCENTER



DENKER REC. CENTER.

HALLOWEEN

ZOMBI

APOCALIPSIS

GRATUITO
PARA EL
PÚBLICO

26 DE OCTUBRE DE 2024

12:00 P. M. A 4:00 P. M.

COMIDA GRATIS, DULCES,
JUEGOS, PREMIOS,
LABERINTO Y MUCHO MÁS.

GRATIS
ENTRADA



1550 W. 35th Pl., Los Angeles. CA 90018

Office: (323) 733-8367

Email: Denker.RecreationCenter@lacity.org

@DENKERRECREATIONCENTER