



TRACK & FIELD



Registration Starts
12/02/24

AGES 8-15
\$10
PER CHILD

Every Thursday
4:00pm - 5:00pm

8 WEEK SESSION

CLASSES BEGIN JAN 9TH, 2025

CLASSES ENDS FEB 20, 2025

DENKER REC CENTER

1550 W. 35TH PL

LOS ANGELES, CA 90018

(323) 733-8367



SCAN QR
CODE OR
VISIT

laparks.org/reccenter/denker

Persons with disabilities are encouraged to participate in our classes and programs. Reasonable accommodations may be made with prior arrangement. "Achieving Gender Equity through a continuous commitment to Girls and Women in Sports" This program is subject to cancellation. "PlayLA Youth and Adaptive Sports Program is made possible by the LA28 Olympic and Paralympic Games, allowing youth to participate for \$10. Waivers are available, ask for details.



PISTA & CAMPO



Comienza el registro
12/02/24

Edades 8-15

\$10

POR NIÑO

Todos los jueves
4:00pm - 5:00pm

SESIÓN DE 8 SEMANAS

LAS CLASES COMIENZAN EL 9 DE ENERO DE 2025

LA CLASE TERMINA EL 20 DE FEBRERO DE 2025



DENKER REC CENTER

1550 W. 35TH PL.

LOS ANGELES. CA 90018

(323) 733-8367

SCAN QR
CODE OR
VISIT

laparks.org/reccenter/denker



Persons with disabilities are encouraged to participate in our classes and programs. Reasonable accommodations may be made with prior arrangement. "Achieving Gender Equity through a continuous commitment to Girls and Women in Sports" This program is subject to cancellation. "PlayLA Youth and Adaptive Sports Program is made possible by the LA28 Olympic and Paralympic Games, allowing youth to participate for \$10. Waivers are available, ask for details.



JUDO

8 WEEK SESSION

DENKER REC. CENTER

1550 W. 35TH PL. LA, CA 90018
OFFICE: (323)733-8367



TUES & THURS

6:30P-8:30PM

REGISTRATION:

12/02/24

\$10 PER CHILD



**CLASSES BEGIN
JAN 7TH, 2025**

AGES 5-12

AGES VARY BY SITE

Persons with disabilities are encouraged to participate in our classes and programs. Reasonable accommodations may be made with prior arrangement. "Achieving Gender Equity through a continuous commitment to Girls and Women in Sports" This program is subject to cancellation. "PlayLA Youth and Adaptive Sports Program is made possible by the LA28 Olympic and Paralympic Games, allowing youth to participate for \$10. Waivers are available, ask for details.



VISIT US AT: LAPARKS.ORG



JUDO

SESIÓN DE 10 SEMANAS

DENKER REC. CENTER

1550 W. 35TH PL. LA, CA 90018
OFFICE: (323)733-8367

PLAYLA

MARTES Y JUEVES

6:30PM-8:30PM

2 DE DICIEMBRE DE 2024

\$10

POR NIÑO



LAS CLASES COMIENZAN 7 DE ENERO DE 2025

EDADES 5-12

LAS EDADES VARÍAN

SEGÚN EL SITIO

Persons with disabilities are encouraged to participate in our classes and programs. Reasonable accommodations may be made with prior arrangement. "Achieving Gender Equity through a continuous commitment to Girls and Women in Sports" This program is subject to cancellation. "PlayLA Youth and Adaptive Sports Program is made possible by the LA28 Olympic and Paralympic Games, allowing youth to participate for \$10. Waivers are available, ask for details.



VISIT US AT: LAPARKS.ORG



DENKER REC. CENTER

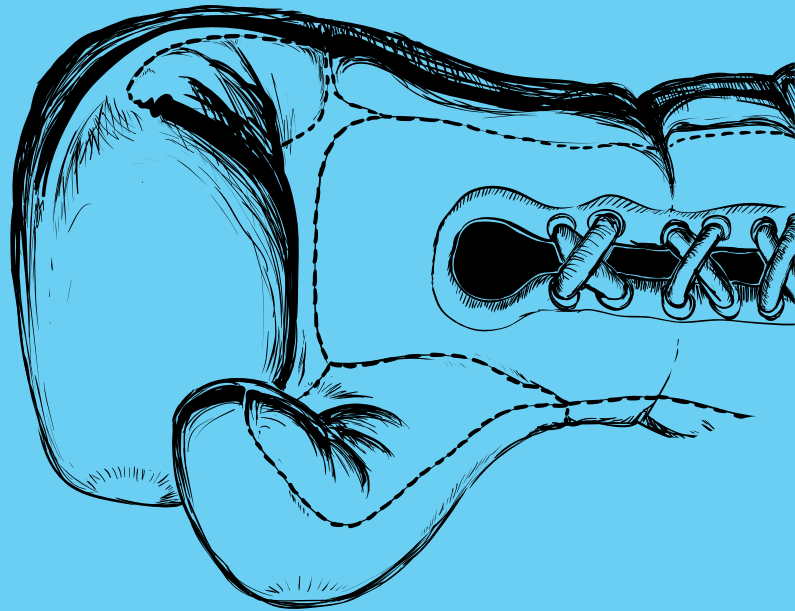


Boxing



Co-Ed

Registration Starts
12/02/24



AGES 7-15

\$10

PER CHILD

8 WEEK SESSION

CLASSES BEGIN JAN 6TH, 2025

CLASSES ENDS FEB 17TH, 2025

***NO CLASSES JAN 20 & FEB 17TH ***

MONDAYS

4PM-5PM

5PM-6PM

DENKER REC CENTER

1550 W. 35TH PL.

LOS ANGELES. CA 90018

SCAN QR
CODE OR
VISIT

laparks.org/reccenter/denker **(323) 733-8367**



Persons with disabilities are encouraged to participate in our classes and programs. Reasonable accommodations may be made with prior arrangement. "Achieving Gender Equity through a continuous commitment to Girls and Women in Sports" This program is subject to cancellation. "PlayLA Youth and Adaptive Sports Program is made possible by the LA28 Olympic and Paralympic Games, allowing youth to participate for \$10. Waivers are available, ask for details.



BALLET

8 WEEK SESSION

DENKER REC. CENTER

1550 W. 35TH PL. LA, CA 90018
OFFICE: (323)733-8367



TUESDAYS

TINY BALLET 5:00PM-6:00PM

BALLET 5:30PM-6:30PM

REGISTRATION:
12/02/24

\$10 PER CHILD



**CLASSES BEGIN
JAN 7TH, 2025**

**CLASSES END
FEB 18TH, 2025**

AGES 4-6 "TINY BALLET"
AGES 7-12 "BALLET"

YOUTH CO-ED



Persons with disabilities are encouraged to participate in our classes and programs. Reasonable accommodations may be made with prior arrangement. "Achieving Gender Equity through a continuous commitment to Girls and Women in Sports" This program is subject to cancellation. "PlayLA Youth and Adaptive Sports Program is made possible by the LA28 Olympic and Paralympic Games, allowing youth to participate for \$10. Waivers are available, ask for details.

DENKER REC. CENTER

SOCCER

Clinic



Registration Starts
12/02/24

\$10 PER PERSON	YOUTH AGE 5-12	JAN 4TH - FEB 22 2025
---------------------------	--------------------------	--

@DENKERRECREATIONCENTER

SATURDAYS

AGE 5-8: 10AM - 11AM

AGE 9-12: 11AM - 12PM



DENKER REC

1550 W. 35TH PL.
LOS ANGELES, CA 90018
(323) 733-8367



SCAN QR
CODE OR
VISIT

laparks.org/reccenter/denker

Persons with disabilities are encouraged to participate in our classes and programs. Reasonable accommodations may be made with prior arrangement. "Achieving Gender Equity through a continuous commitment to Girls and Women in Sports" This program is subject to cancellation. "PlayLA Youth and Adaptive Sports Program is made possible by the LA28 Olympic and Paralympic Games, allowing youth to participate for \$10. Waivers are available, ask for details.

DENKER REC. CENTER

BASEBALL



Skills

Registration Starts
12/02/24

\$10

PER PERSON

YOUTH AGE

5-8

JAN 16TH - MAR 6
2025

@DENKERRECREATIONCENTER

THURSDAYS

AGE 5-8: 4:00PM-5:00PM

DENKER REC

1550 W. 35TH PL.
LOS ANGELES, CA 90018
(323) 733-8367



SCAN QR
CODE OR
VISIT

laparks.org/reccenter/denker

Persons with disabilities are encouraged to participate in our classes and programs. Reasonable accommodations may be made with prior arrangement. "Achieving Gender Equity through a continuous commitment to Girls and Women in Sports" This program is subject to cancellation. "PlayLA Youth and Adaptive Sports Program is made possible by the LA28 Olympic and Paralympic Games, allowing youth to participate for \$10. Waivers are available, ask for details.



DENKER REC. CENTER

CROCHET



YOUTH CO-ED

Registration Starts
12/02/24



AGES 6-14

\$10

PER CHILD

8 WEEK SESSION

CLASSES BEGIN JAN 8TH, 2025

CLASSES ENDS FEB 26, 2025

WEDNESDAYS

4:30PM-5:30PM

DENKER REC CENTER

1550 W. 35TH PL.

LOS ANGELES. CA 90018

(323) 733-8367



SCAN QR
CODE OR
VISIT

laparks.org/reccenter/denker

Persons with disabilities are encouraged to participate in our classes and programs. Reasonable accommodations may be made with prior arrangement. "Achieving Gender Equity through a continuous commitment to Girls and Women in Sports" This program is subject to cancellation.

DENKER REC. CENTER

DANCE



PLAYLA

REGISTRATION STARTS
12/02/2024



@DENKERRECREATIONCENTER

8 WEEK SESSION

AGES 7-12

\$10

PER CHILD

CLASSES BEGIN JAN 8TH, 2025

CLASSES ENDS MAR 6TH, 2025

WEDNESDAYS

5:00PM-6:00PM

DENKER REC CENTER

1550 W. 35TH PL.

LOS ANGELES. CA 90018

(323) 733-8367

SCAN QR
CODE OR
VISIT

laparks.org/reccenter/denker

Persons with disabilities are encouraged to participate in our classes and programs. Reasonable accommodations may be made with prior arrangement. "Achieving Gender Equity through a continuous commitment to Girls and Women in Sports" This program is subject to cancellation. "PlayLA Youth and Adaptive Sports Program is made possible by the LA28 Olympic and Paralympic Games, allowing youth to participate for \$10.

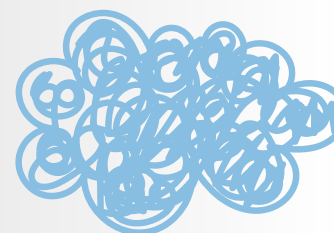
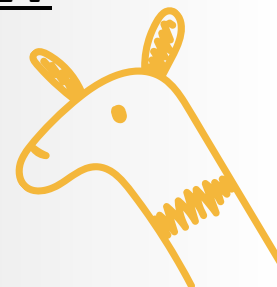
DENKER REC. CENTER



ARTFUL EXPRESSIONS



Registration Starts
12/02/24



8 WEEK SESSION

AGES 5-17

\$10

PER CHILD

CLASSES BEGIN JAN 9TH, 2025

CLASSES ENDS FEB 27TH, 2025

THURSDAYS

5:00PM-6:00PM

DENKER REC CENTER

1550 W. 35TH PL.

LOS ANGELES. CA 90018

(323) 733-8367



SCAN QR
CODE OR
VISIT

laparks.org/recenter/denker

