

City of Los Angeles Department of Recreation and Parks



# Pickleball Courts at Hermon Park

(Arroyo Seco Park)

## Community Meeting



**Highland Park Senior Center**  
Wednesday, April 9, 2025  
6:30 p.m. - 7:30 p.m.



# AGENDA

WELCOME AND INTRODUCTIONS

WHERE TO FIND INFORMATION

MEETING PURPOSE / THE PROCESS

SCOPE OF WORK

CONCESSIONAIRE USE

NEXT STEPS

Q & A



# HERMON PARK - WHO WE ARE

## METRO REGION

---

**Anita Meacham**  
Region Superintendent

**Kimberly Simonet**  
Principal Recreation Supervisor II

**Juan Guzman**  
Recreation Supervisor

## PICKLEBALL COMMITTEE

---

**Juan Aynat** , Chairperson, Valley Region

**Leslie Richter**, West Region

**Juan Guzman**, Metro Region

**Elaine Piha**, Pacific Region

**Rich Kraveitz**, Valley Region

**Anthony Gallo**, Park Services Division

**Mark Stipanovich**, RAP Concessions



# Learn more about Pickleball in the City of Los Angeles

[www.laparks.org/pickleball](http://www.laparks.org/pickleball)

The Department of Recreation and Parks is seeking to expand Pickleball opportunities using a balanced approach that promotes accessibility and equity to this rapidly growing sport while preserving the importance of tennis courts in our communities. Our goal is to ensure that both Pickleball and Tennis thrive and meet the diverse recreational needs of our residents.

## MISSION STATEMENT

Our Department is dedicated to promote the growth, accessibility, and enjoyment of Pickleball by helping create inclusive opportunities, developing quality facilities, and fostering community engagement for players of all ages and skill levels, while adhering to the best practices in sustainability, rules, safety, and equitable access.

## Pickleball

Pickleball is one of the fastest growing sports nationwide. With groups of two to four players, the game of Pickleball combines the elements of badminton, tennis, and table tennis. Whether you are new to Pickleball or an avid player, LA City Parks has indoor and outdoor Pickleball courts available for you to play and enjoy.

The Department of Recreation and Parks is seeking to expand Pickleball opportunities using a balanced approach that promotes accessibility to this rapidly growing sport while preserving the importance of tennis courts in our communities. Our goal is to ensure that both Pickleball and Tennis thrive and meet the diverse recreational needs of our residents.



## MISSION STATEMENT

Our Department is dedicated to promote the growth, accessibility, and enjoyment of Pickleball by helping create inclusive opportunities, developing quality facilities, and fostering community engagement for players of all ages and skill levels, while adhering to the best practices in sustainability, rules, safety, and equitable access.

## OBJECTIVES OF THE CITYWIDE PICKLEBALL COMMITTEE

- A. To identify potential areas and underused tennis courts in the city for the development of new standalone complexes or the creation of hybrid Pickleball court opportunities.
- B. To help promote the sport of Pickleball within RAP communities by collaborating with local ambassadors to highlight the benefits of pickleball.
- C. To recommend facilities with Pickleball courts, offer classes and instruction for players of all levels, including beginner, intermediate, and advanced.
- D. To help promote the socialization benefit of Pickleball with our RAP Facilities by encouraging the hosting of tournaments or events to add fun and excitement to the game.
- E. To advocate the importance of well-maintained facilities with clearly marked courts, established rules, an organized waiting system, and adequate lighting.
- F. To serve in an advisory role on the latest rules, waiting systems, and best practices for Pickleball court use.
- G. To advocate setting aside dedicated playing times for older adults and players with disabilities.



# The Project

Tennis court conversion.

## Assessment / Outreach

Gather feedback and provide clarity.

## Scope of Work (From Concept to Development)

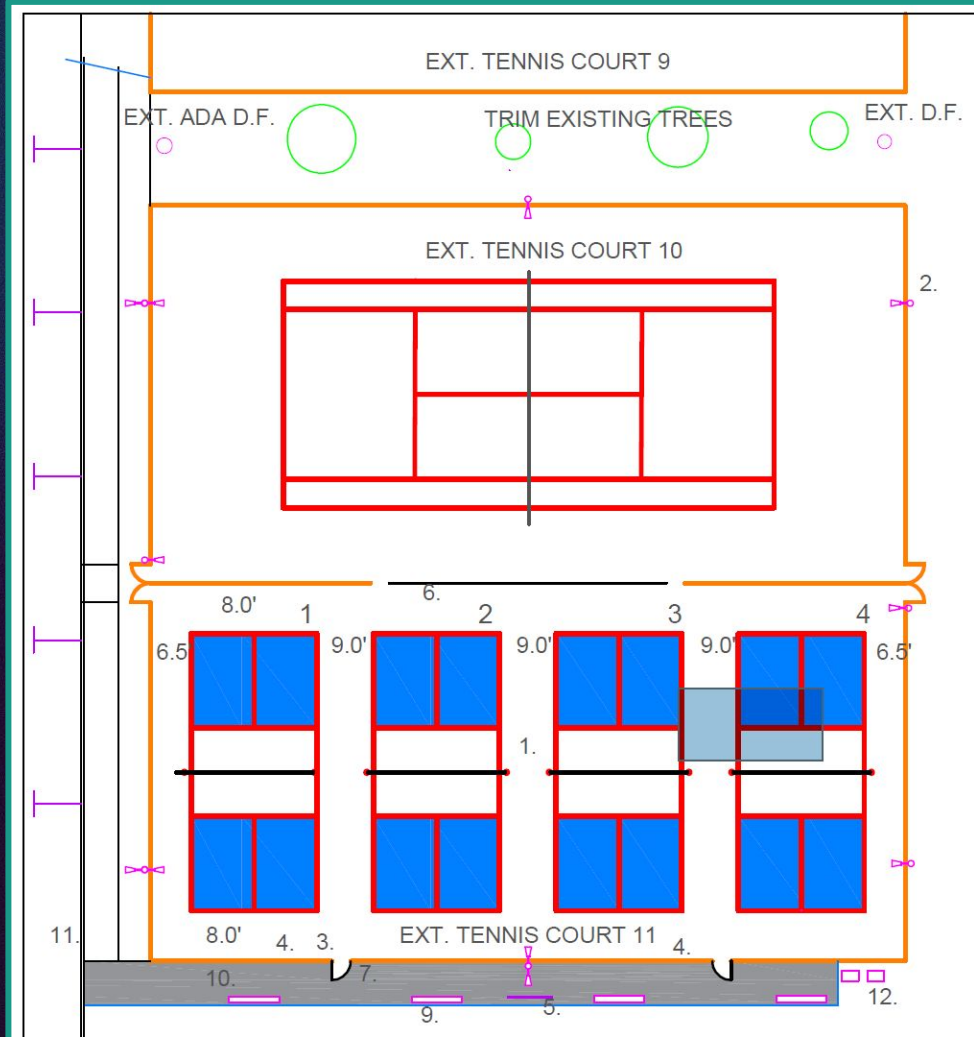
## Discuss Next Steps (Final Approval)

# MEETING PURPOSE

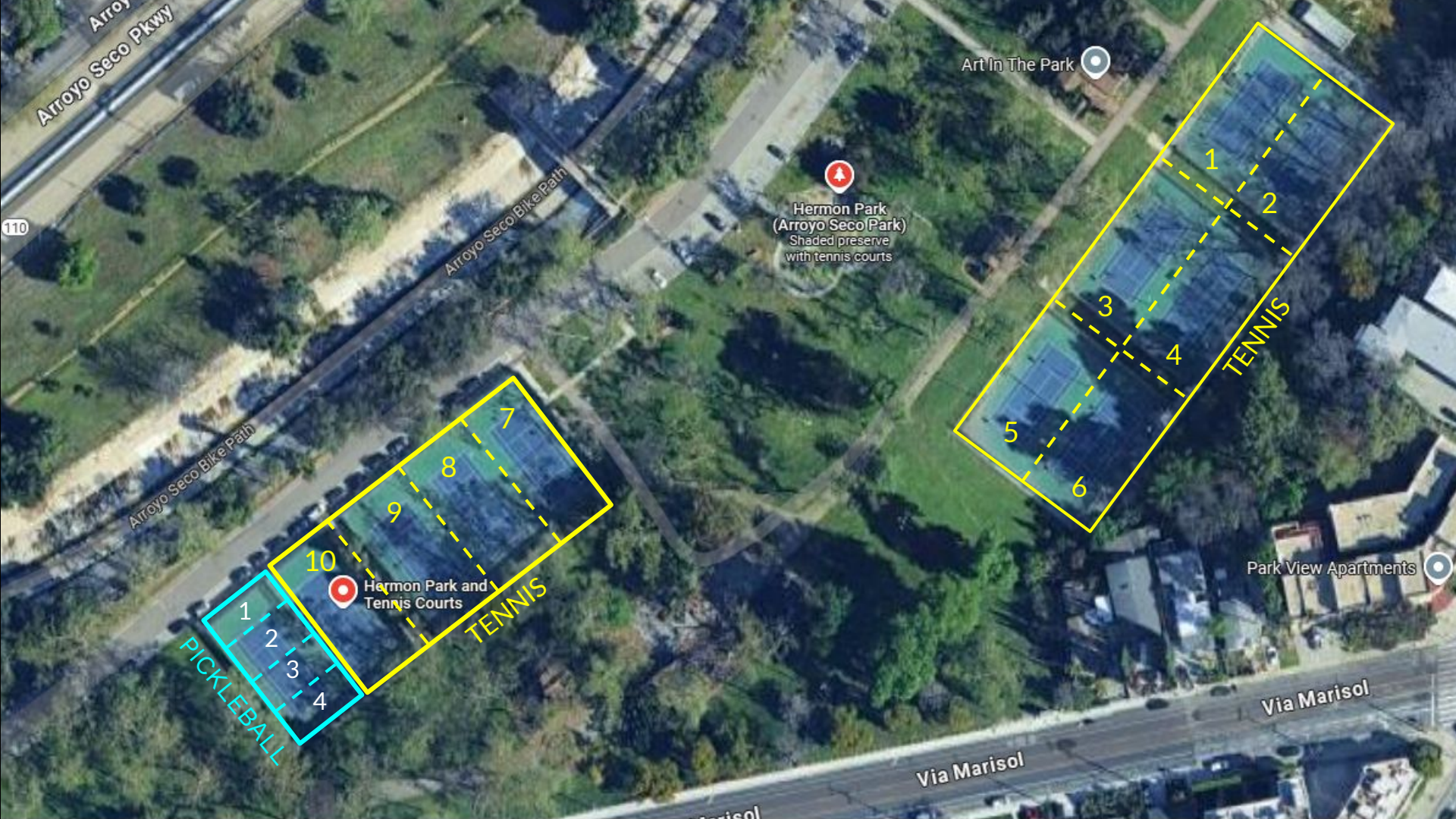
# SCOPE OF WORK

## FOUR PICKLEBALL COURTS - CONVERSION OF TENNIS COURT #11

1. Remove tennis net and posts, patch slab, level low spots, patch cracks, clean surface and prime.
2. Paint surface with 2-3 colors, service area, kitchen area and surrounding area.
3. Add 4 pickleball nets and 8 posts.
4. Remove existing tennis net and posts.
5. Relocate existing plywood practice wall to Court 9.
6. Replace windscreen where needed on Courts 10 and 11 (if needed).
7. Extend divider fence between Courts 10 and 11. Two access points will be constructed.
8. Add concrete/asphalt passage sidewalk outside of Court 11.
9. Add benches on southside waiting areas.









# WHY HERMON PARK

- Growing demand - lack of courts in area
- Existing infrastructure - reduce cost
- Unlighted - minimize the impact
- **Location:** Hermon Park being in a prime location in the Metro Region services Highland Park, Lincoln Park, El Sereno, etc.
- **Next phase** - add lighting to tennis courts (9-10) to increase tennis hours of operation
- **Parking**



## WHY DEDICATED OVER HYBRID

- Greater player experience
- Fewer complaints
- Higher volume of use
- Preservation of tennis and pickleball enthusiasts
- Proper dimensions with safety clearance



# Where can we play?

Total # of parks  
with Tennis courts in the  
East/Griffith  
North/Northwest  
(4 out of the 5 Metro Region Districts)

13

Total number of  
Pickleball courts  
within the  
same districts

2

Total # of  
Tennis courts in the  
Metro Region Districts

41

West  
Region  
31

Valley  
Region  
28

Metro  
Region  
2

Pacific  
Region  
12



# CONCESSIONAIRE USE

## LA Tennis

Until further notice, **LA Tennis** has a City authorized permit at Hermon Park to conduct tennis instruction on the days, courts, and times listed below:

Courts 1 and 2

7:00 a.m. - 10:00 p.m.

Monday - Friday

Courts 1, 2, 3 & 4

7:00 a.m. - 10:00 p.m.

Saturday & Sunday



# NEXT STEPS



## **BID & JOB WALK**

The project goes through the City's bidding process and the scope of work is refined.



## **IDENTIFY FUNDING**

Funding resources are identified by Recreation and Parks either via private donors, or co-sponsored by different City departments.



## **PREPARE & PRESENT**

The accepted bid and proposal are presented to the Recreation and Park Board of Commissioners for approval.



## **NOTICE TO PROCEED**

The Notice to Proceed is executed and the project begins!



1 **TIMELINE:**  
Project Launch

2 **DURATION OF  
CONSTRUCTION**

3 **SETBACKS**

4 **COMPLETION DATE**

**UNKNOWN**



And lastly...



# QUESTIONS / COMMENTS

SCAN HERE FOR PROJECT  
UPDATES OR TO ASK  
ADDITIONAL QUESTIONS

