

## MEETING AGENDA

### CITY OF LOS ANGELES DEPARTMENT OF RECREATION AND PARKS FACILITY REPAIR AND MAINTENANCE COMMISSION TASK FORCE

Thursday, February 6, 2025 at 10:00 A.M.  
or soon thereafter as the Board of Recreation and Park Commissioners  
adjourns its Regular Meeting noticed for 9:00 A.M.

Chevy Chase Recreation Center  
4165 E. Chevy Chase Dr.,  
Los Angeles 90039

**Please Note: Public Comment Will be Taken In-Person Only**

To listen to the meeting via Teleconference,  
Use this link: <https://us02web.zoom.us/j/87416494098>

Or Dial (669) 900-6833 to Join the Meeting  
Then Enter this Webinar ID: 874 1649 4098 AND PRESS #

---

LUIS SANCHEZ, CHAIR  
MARIE LLOYD, COMMISSIONER

Staff:

Jimmy Kim, General Manager  
Cathie Santo Domingo, Assistant General Manager  
Darryl Ford, Superintendent  
City Attorney Representative

---

TO LISTEN TO THE MEETING VIA TELECONFERENCE, YOU MUST DIAL (669) 900-6833, AND ENTER 874 1649 4098 AND THEN PRESS #, OR USE THE LINK <https://us02web.zoom.us/j/87416494098>. PUBLIC COMMENTS WILL BE TAKEN IN PERSON ONLY. EACH SPEAKER WILL BE GRANTED A MAXIMUM OF TWO (2) MINUTES FOR PUBLIC COMMENTS.

NOTICE TO PAID REPRESENTATIVES – IF YOU ARE COMPENSATED TO MONITOR, ATTEND, OR SPEAK AT THIS MEETING, CITY LAW MAY REQUIRE TO REGISTER AS A LOBBYIST AND REPORT YOUR ACTIVITY. SEE LOS ANGELES MUNICIPAL CODE 48.01 ET SEQ. MORE INFORMATION IS AVAILABLE AT <https://ethics.lacity.org/lobbying/>. FOR ASSISTANCE, PLEASE CONTACT THE ETHICS COMMISSION AT (213) 978-1960 OR [ethics.commission@lacity.org](mailto:ethics.commission@lacity.org).

THIS AGENDA AND ITS REPORTS ARE AVAILABLE ONLINE AT: <https://www.laparks.org/commissioners/facility-task-force>.

1. CALL TO ORDER
2. CURRENT BUSINESS
  - A. Park Needs Assessment  
Project Update

February 6, 2025

3. PUBLIC COMMENT

Comments by the Public on Matters within Task Force Jurisdiction

4. NEXT MEETING

The next Facility Repair and Maintenance Commission Task Force Meeting is tentatively scheduled for Thursday, March 6, 2025 at 10:00 A.M. or soon thereafter as the Board of Recreation and Park Commissioners adjourns its Regular Meeting noticed for 9:00 A.M.

5. ADJOURNMENT

Additional Information

Under the California State Ralph M. Brown Act, those wishing to make audio recordings of the Commission Task Force Meetings are allowed to bring tape recorders or camcorders in the Meeting.

Sign language interpreters, assistive listening devices, or any auxiliary aides and/or services may be provided upon request. To ensure availability, you are advised to make your request at least 72 hours prior to the meeting you wish to attend. For additional information, please contact the Commission Office at (213) 202-2640.

Information on Agenda items may be obtained by calling the Commission Office at (213) 202-2640. Copies of the Commission Task Force Agenda may be downloaded from the Department's website at [www.laparks.org](http://www.laparks.org).

CITY OF LOS ANGELES  
DEPARTMENT OF RECREATION AND PARKS  
FACILITY REPAIR AND MAINTENANCE COMMISSION TASK FORCE BRIEFING  
February 6, 2025

**Informational Update of the 2025 Recreation and Parks' Park Needs Assessment**

**Background:**

The Park Needs Assessment (PNA) is an evaluation of present and future park and recreational needs of the residents throughout the entire City of Los Angeles, with the goal of developing a Decision Making Framework to objectively inform how RAP should be prioritizing overall park investment, including future capital improvement projects, and to allocate RAP resources to meet the needs identified in the community outreach process that emphasizes inclusivity, accessibility, and transparency. This is the first Citywide PNA effort since 2009.

On December 19, 2024, the Board of Recreation and Park Commissioners approved Board Report No. 24-269; approving the bid and award of contact to Olin Partnership, LTD for the preparation of a Citywide Park Needs Assessment (PNA). On January 2, 2025, RAP executed contract No. 4140 with Olin Partnership, LTD.

The main components of the PNA include: 1) a Technical Advisory Committee (TAC) tasked with critically reviewing and helping to fine-tune materials based on specific technical expertise; 2) a Steering Committee (SC) tasked with providing input on the PNA during the project process; 3) Engaging with the public in a multi-phased outreach program; and, 4) Completing an evaluation of the current and future needs of park and recreation services.

In order to make accurate forecasts on the future needs of RAP services, population projections using the most current Citywide data combined with data of past park investment, growth, and development over the last 25 years will help inform the PNA.

The foundation of the PNA is the feedback gathered from various community outreach methods, including but not limited to stakeholder meetings, public workshops, focus groups, and surveys. The goals of public participation are to: 1) Educate the public about the role RAP plays within the City of Los Angeles; 2) Solicit input from a diverse audience from a diverse cross-section of the City, including individuals who may not be able to attend meetings; 3) Provide opportunities for communities across the City to provide feedback on the PNA process, including progress updates on the Technical Advisory Committee, Steering Committee, and RAP components of the Draft PNA development; and, 4) Include hybrid options that allow for a variety of methods based on any prevailing health restrictions, community preference, or other unforeseen requirements. Currently, there is a website for the PNA that includes information and updates about the project and opportunities for the public to get involved. The website will transition over the course of the process from an engagement website to a web-based version of the PNA document.

**January Updates as of 1/31/2025:**

On January 16, 2025, the PNA kick-off meeting was held with OLIN, the Consultant Team, and RAP Executive and Planning staff. The draft PNA report is anticipated to be released in late August 2025, and the final report is anticipated to be released in December 2025. The meeting slides are shown as Attachment 1.

RAP and OLIN have been diligently working to finalize the schedule and workplan, select and invite the Steering Committee and Technical Advisory Committee members, prepare for the PNA website and social

CITY OF LOS ANGELES  
DEPARTMENT OF RECREATION AND PARKS  
FACILITY REPAIR AND MAINTENANCE COMMISSION TASK FORCE BRIEFING  
February 6, 2025

platform launch, coordinate community meeting locations, share pertinent department information for the last 25 years, and collaborating on the goals and vision of the PNA.

**Historical Data and Literature Review as of 1/31/2025:**

RAP has provided to OLIN the following information and documents for the PNA's 25-year historical analysis:

1. RAP Branding Guidelines.
2. RAP Organizational Chart.
3. GIS Data:
  - a. Including Park Trees, Park Polygons, Facility Polygons.
4. Finance:
  - a. RAP Historical Annual Adopted Operating Budget Breakdown by Account 2000-2025, Annual Adopted Operating Golf Budget Breakdown 2013-2025.
  - b. RAP Fund Balances Detail.
  - c. Prop K Completion Records, 3-year Annual Plan, Prop K Maintenance Fund FMS report, Prop K Ballot Measure Proposed Project List, and available board reports accepting funding.
  - d. Completed Projects between FY 2003-2024.
  - e. All Quimby, Zone Change, Park Fee funded projects since FY2004, List of Quimby & Zone Change Collections from FY2004 to 1/11/17, List of Park Fee Collections from 1/11/2017 to 12/26/24, Park Fee Annual Reports from FY17 to FY24, Cost Account Tracking Service (CATS) Data.
  - f. Completed grant projects as grant-managed by RAP Projects.
5. Park Acquisitions from 2000-2024.
6. Recreation:
  - a. EARHL (Enrollment, Activity, Revenue, Household, Location) data.
  - b. Special Facilities attendance records 2015-2024, and 2025-2026 Budget Program Overview.
  - c. Muni Sports Independent Permit Survey FY 2021-2024.
  - d. Facility Hours Report FY 2021-2024.
7. Parks Condition Data from the LA Parks Portal.
8. A list of preferred meeting locations for the Community Outreach Task of the PNA.

OLIN is conducting a literature review in conjunction with the preparation of the PNA. The literature review list is shown as Attachment 2.

**Technical Advisory Committee (TAC) Updates as of 1/31/2025:**

- Potential TAC members have been selected and invited to participate. Finalization of the TAC is pending.
- The first TAC meeting is scheduled for February 10, 2025. The meeting will be held at Comrie Hall at EXPO Center. The anticipated agenda topics include a Project Introduction, Engagement Approach Discussion, Parks Conditions Assessment, Needs Criteria Discussion, and a Decision-Making Framework Discussion.

CITY OF LOS ANGELES  
DEPARTMENT OF RECREATION AND PARKS  
FACILITY REPAIR AND MAINTENANCE COMMISSION TASK FORCE BRIEFING  
February 6, 2025

- The second TAC meeting is anticipated to be held in March 2025, and will focus on the Parks Conditions Assessment, a continued Discussion of Needs Criteria, and Refine Ideas for Decision-Making Framework.

**Steering Committee (SC) Updates as of 1/31/2025:**

- Potential SC members have been selected and invited to participate. Finalization of the SC is pending.
- The first SC meeting is scheduled for February 18, 2025. The meeting will be held at Comrie Hall at EXPO Center. The anticipated agenda topics include a Project Introduction, Guiding Principles/Working Agreements, Engagement Approach Discussion, Park Conditions Assessment, and Start Needs Criteria.
- It is anticipated that the SC will meet on the following days:
  - March 18, 2025
  - April 15, 2025
  - May 20, 2025
  - August 19, 2025
  - September 16, 2025
  - November 18, 2025

**PNA Information Distribution and Website Updates as of 1/31/2025::**

- The first press release by RAP is anticipated to be released in mid-February with the launch of the PNA website and social platforms. This will be an announcement of the start of the PNA and will refer to opportunities for public engagement that can be found on the project website.

**Public Engagement (Phase 1) as of 1/31/2025:**

- The goal of Phase 1 is to focus on an assessment of the public's general understanding of RAP's role within the City and obtaining general feedback regarding RAP's overall performance as perceived by the community. Extensive surveying will be conducted to determine the needs of the participating public and to distinguish the specific user groups for the variety of park amenities. Participants would have an opportunity to describe and rank existing park amenities in order of importance in order to gauge the priorities based on user groups.
- Seven traditional large format meetings have been tentatively scheduled for the following dates and times.
  - Tuesday, March 4, 2025: Ramona Hall (CD1) from 6-8pm
  - Wednesday, March 5, 2025: Wilmington RC (CD15) from 6-8pm
  - Thursday, March 6, 2025: Algin Sutton RC (CD8) from 6-8pm
  - Saturday, March 8, 2025: Victory Vineland RC (CD2) from 10am-12pm
  - Tuesday, March 11 2025: Tarzana Child Care Building (CD3) from 6-8pm
  - Thursday, March 13, 2025: Westchester RC (CD11) from 6-8pm

CITY OF LOS ANGELES  
DEPARTMENT OF RECREATION AND PARKS  
FACILITY REPAIR AND MAINTENANCE COMMISSION TASK FORCE BRIEFING  
February 6, 2025

- Saturday, March 15, 2025: Lincoln Park SCC (CD14) from 10am-12pm
- One virtual meeting is anticipated to be held on March 18, 2025 from 6pm-8pm. The recording of the meeting will be made available on the PNA website.
- One interest group meeting for parks funding partners will be held on February 20, 2025. The meeting will be held at Comrie Hall at Expo Center.
- One interest group meeting for parks organizations, non profits, neighborhood councils, and other interested groups will be held virtually on February 27, 2025.
- Phase 1 may also include 4 equity-focused on-site workshops/focus groups, 2 tribal outreach conversations/workshops, and 1-4 pop up tables at events held by others. These events have yet to be scheduled.
- Community Partners will be invited to apply to assist with community engagement during the project. Over \$100,000 of funding will be made available to approximately 12 partner non-governmental and non-commercial organizations. The application for organizations will be available beginning February 6 through February 28, 2025. Partners will be selected during early March.

**Attachments:**

1. Attachment 1 - Kick-off Presentation Slides
2. Attachment 2 - PNA Literature Review List

CITY OF LOS ANGELES  
DEPARTMENT OF  
RECREATION AND PARKS

# PARK NEEDS ASSESSMENT

16 JANUARY 2024

PROJECT KICK OFF



- 1. Introductions**
  - 2. Introduction from RAP**
  - 3. Project Introduction & Schedule**
  - 4. Project Goals Discussion**
  - 5. Engagement Discussion**
  - 6. Steering Committee Discussion**
  - 7. Technical Advisory Committee Discussion**
  - 8. Next Steps and Upcoming Dates**
-



**PROJECT  
LEADERSHIP**



**JESSICA HENSON**  
Partner-in-Charge, Project  
Manager  
OLIN



**ANDREW  
DOBSHINSKY**  
Parks Planning Specialist  
OLIN



**SARAH SWANSEEN**  
Project Coordinator  
OLIN

**PLANNING,  
GEOGRAPHIC, &  
DESIGN EXPERTS**



**LAUREN ELACHI**  
Equity and Activism Design  
Specialist  
KDI



**CHRIS TORRES**  
Arts and Cultural Programming  
Expert  
AGENCY ARTIFACT



**ISAIAH FORD**  
Engagement and Outreach  
THE ROBERT GROUP

**ENGAGEMENT &  
CAPACITY BUILDING**



**THOMSON DRYJANSKI**  
Funding + Political Strategy  
ESTOLANO ADVISORS



**SHONA CALZADA GANGULY**  
Coalition Building  
BETTER WORLD GROUP



**CHRISTINA MONZER**  
Senior Project Manager  
THE ROBERT GROUP

**TECHNICAL  
EXPERTISE**



**MARK HANNA**  
Water Resource Engineering  
GEOSYNTEC



**HALEY BAUER**  
Water Resource Engineering  
GEOSYNTEC



**CONNIE CHUNG**  
Partner-in-Charge, Financial  
Analysis  
HR&A



**JON CHRISTENSEN**  
Park Access Research Lead  
UCLA/LUSKIN

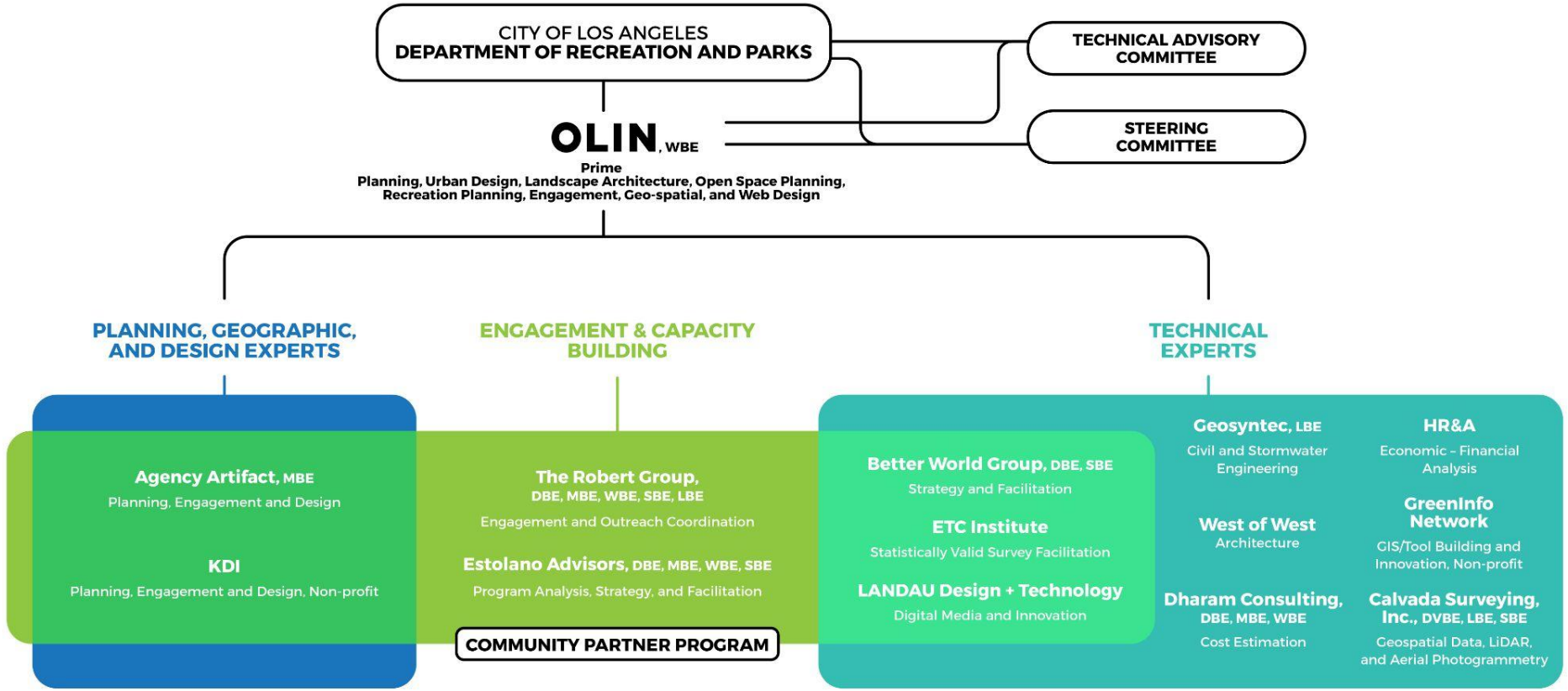


**MARÍA DEL CARMEN  
LAMADRID**  
Park Access Design Researcher  
GREENINFO NETWORK

**DRAFT**

# TEAM ORGANIZATION CHART

DRAFT



# ADDITIONAL TEAM MEMBERS

DRAFT

## FACILITATION AND ENGAGEMENT

---



**CECILIA ESTOLANO**  
CEO, Strategic Advisor and  
Facilitation Lead  
**ESTOLANO ADVISORS**



**CHELINA ODBERT**  
Community Equity  
**KDI**



**CHRISTINE ROBERT**  
Founder and President,  
Engagement and Outreach  
Expert  
**THE ROBERT GROUP**



**CYNTHIA GUZMAN**  
Funding + Political Strategy  
**ESTOLANO ADVISORS**



**CHRIS LANDAU**  
Video Direction  
**LANDAU DESIGN + TECHNOLOGY**



**KIMBERLY GUO**  
Coalition Building  
**BETTER WORLD GROUP**

## TECHNICAL CRITERIA

---



**JOANNA KARAMAN,RLA, ASLA**  
Associate, Ecology Specialist  
**OLIN**



**DAN RADEMACHER**  
Geospatial Data and Analysis Director  
**GREENINFO NETWORK**



**ERIC RILEY**  
Urban Planning  
**KDI**



**MAX DICKSON, AICP**  
Senior Planner  
**OLIN**



**EMILIO URANGA III**  
Arts and Programming  
**AGENCY ARTIFACT**



**STEPHANIE CASTLE ZINN**  
Water Quality Engineering  
**GEOSYNTEC CONSULTANTS**



**JONATHAN RIEKE, AIA, NCARB**  
Studio Director  
**WEST OF WEST**

## FINANCIAL AND STRATEGY

---



**JILL SCHMIDT BENGOCHEA**  
Financial Analysis  
**HR&A**



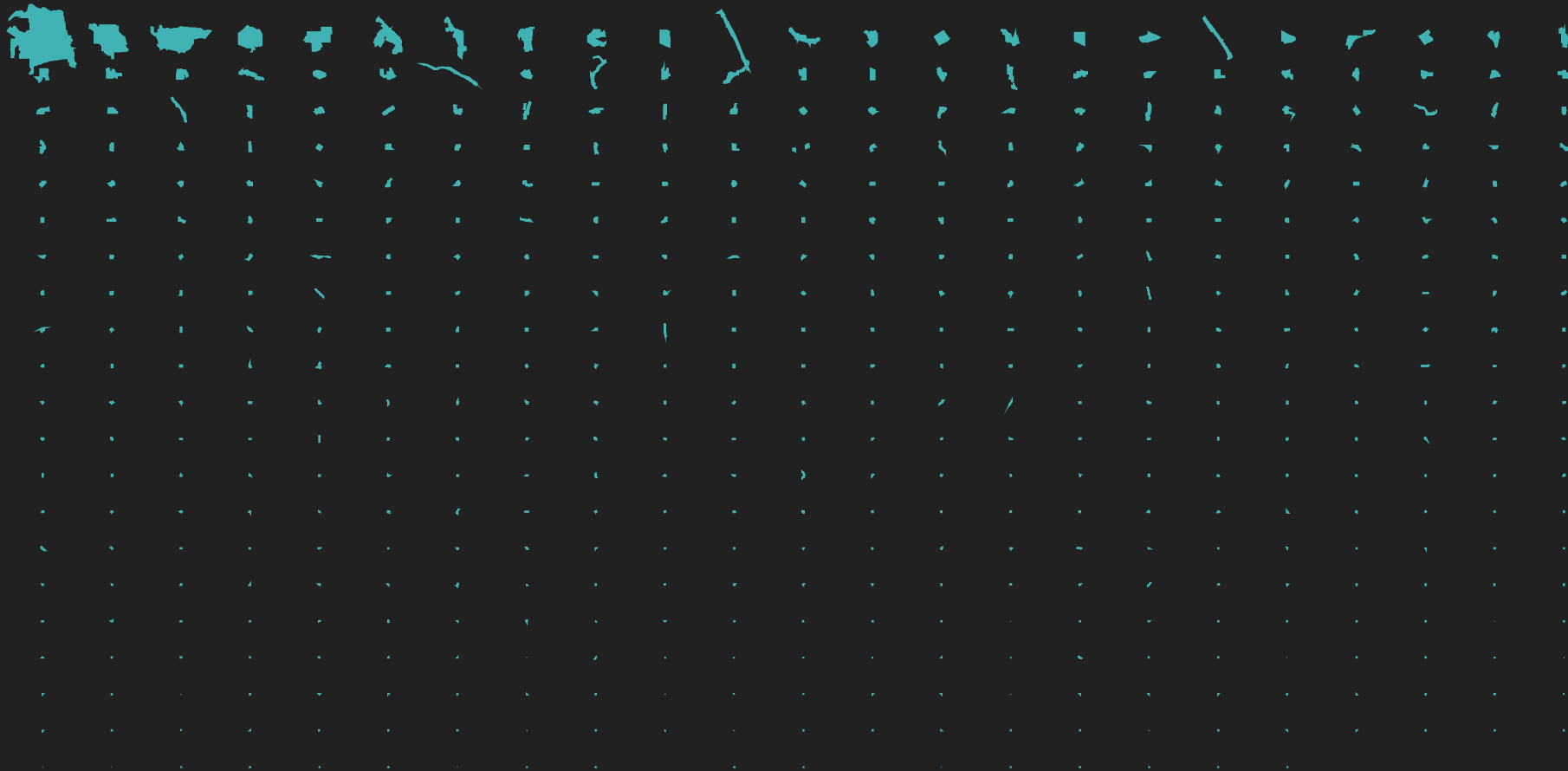
**SIMON R. HOUGH**  
Cost Estimation  
**DHARAM CONSULTING**

# PROJECT INTRO

---

**16,000+ ACRES**

**DRAFT**





# PROJECT SCHEDULE

DRAFT



TASK I: PROJECT INITIATION

TASK II: CONDUCT AND COORDINATE STEERING COMMITTEE MEETINGS

TASK III: CONDUCT AND COORDINATE TECHNICAL ADVISORY COMMITTEE (TAC) MEETINGS

TASK IV: PCA DATA  
TRANSLATED TO PNA

TASK V: EVALUATION OF CURRENT  
AND FUTURE PARK NEEDS

TASK VI: COMMUNITY OUTREACH AND PUBLIC PARTICIPATION

TASK VII: DRAFT REPORT  
AND PRESENTATION

TASK VIII: FINAL PNA  
DOCUMENT AND COLLATERAL  
MATERIALS



TASK IX. PROJECT MANAGEMENT

## THE PARK NEEDS ASSESSMENT MUST BE

**EQUITABLE**

**INNOVATIVE**

**GENERATIONAL**

## TO ACHIEVE THE ROBUST GOALS OF THE PARK NEEDS ASSESSMENT WE MUST

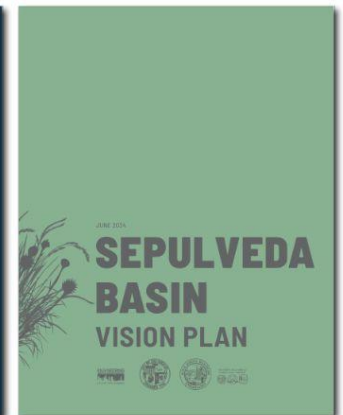
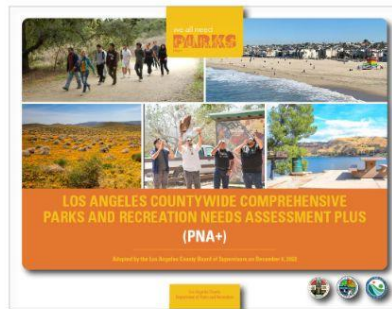
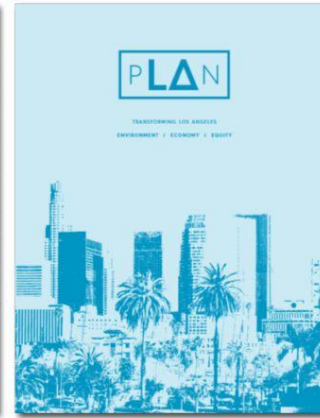
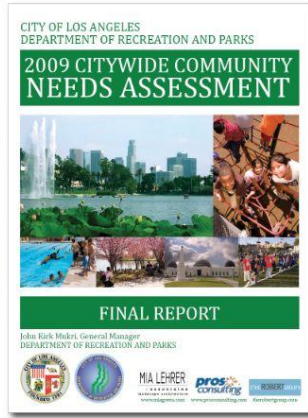
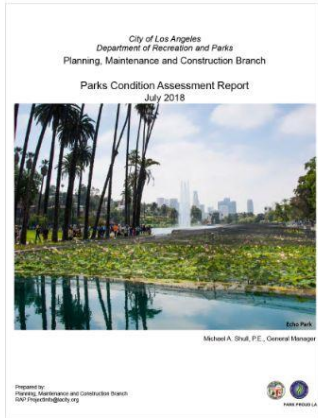
**BRING & BUILD CAPACITY**

**GROW BUY-IN**

**LINK TO DECISION MAKING  
AND FINANCIAL REALITY**



- **Baseline from Previous Assessments**
- **Literature Review**
- **Translate RAP Facilities Conditions Assessment to the PNA**
- **Population Growth Model**
- **Assessment Criteria**



...and many more



Modeling the Data into Attribute Tables that can be searched, understood, and made accessible to the public





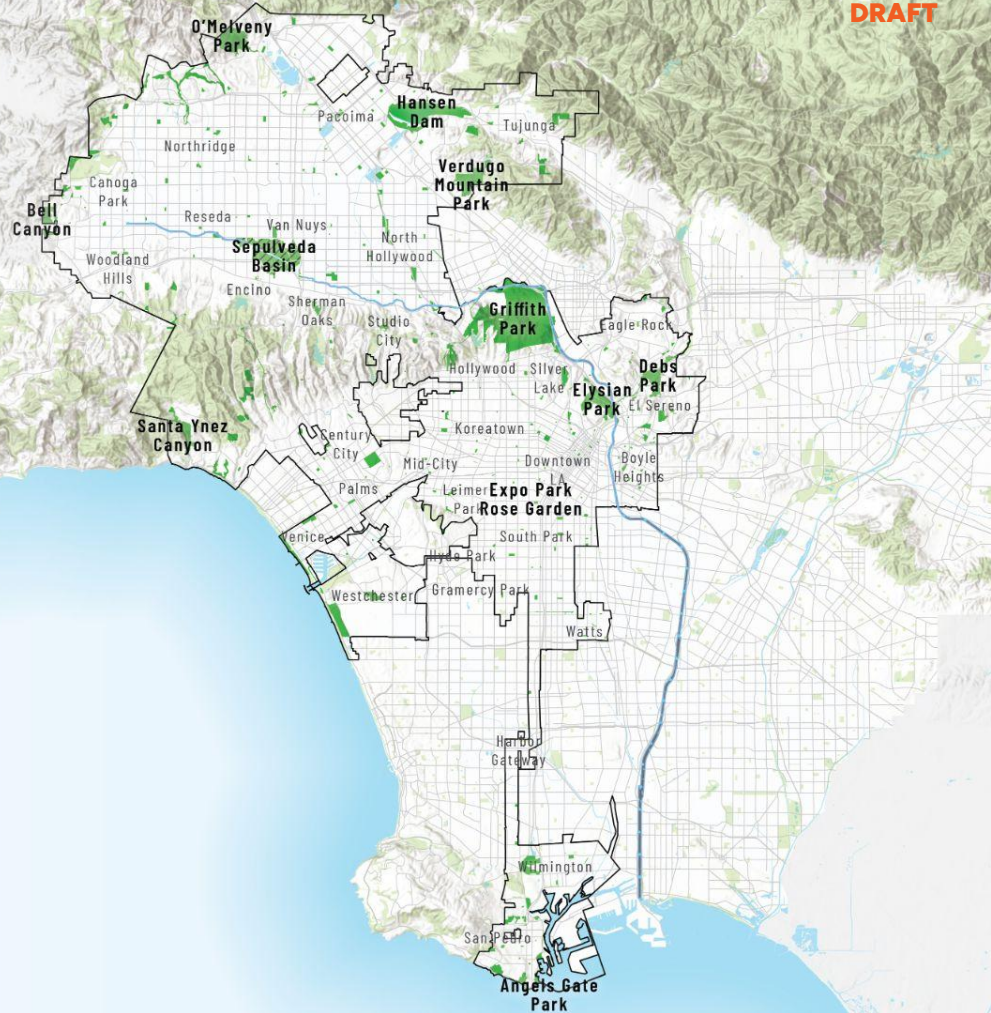
**High-Level  
Innovative Tools and  
Criteria**



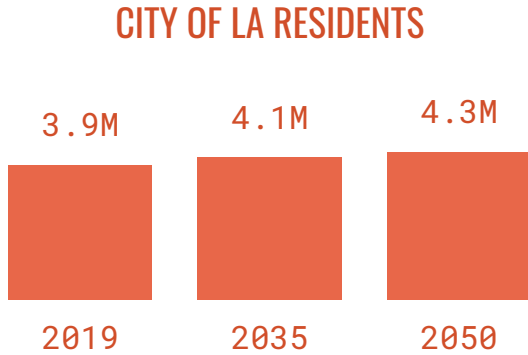
**Local Geographies and  
Lived Reality**

## High-Level Innovative Tools and Criteria

- City of LA Parks
- Other Parks and Open Spaces
- City of LA Boundary
- Roadways
- LA River
- Other Waterways



**THE CITY OF LA'S PROJECTED 10%  
GROWTH IS ON PAR WITH THE REGION'S  
OVERALL 11% GROWTH BY 2050**

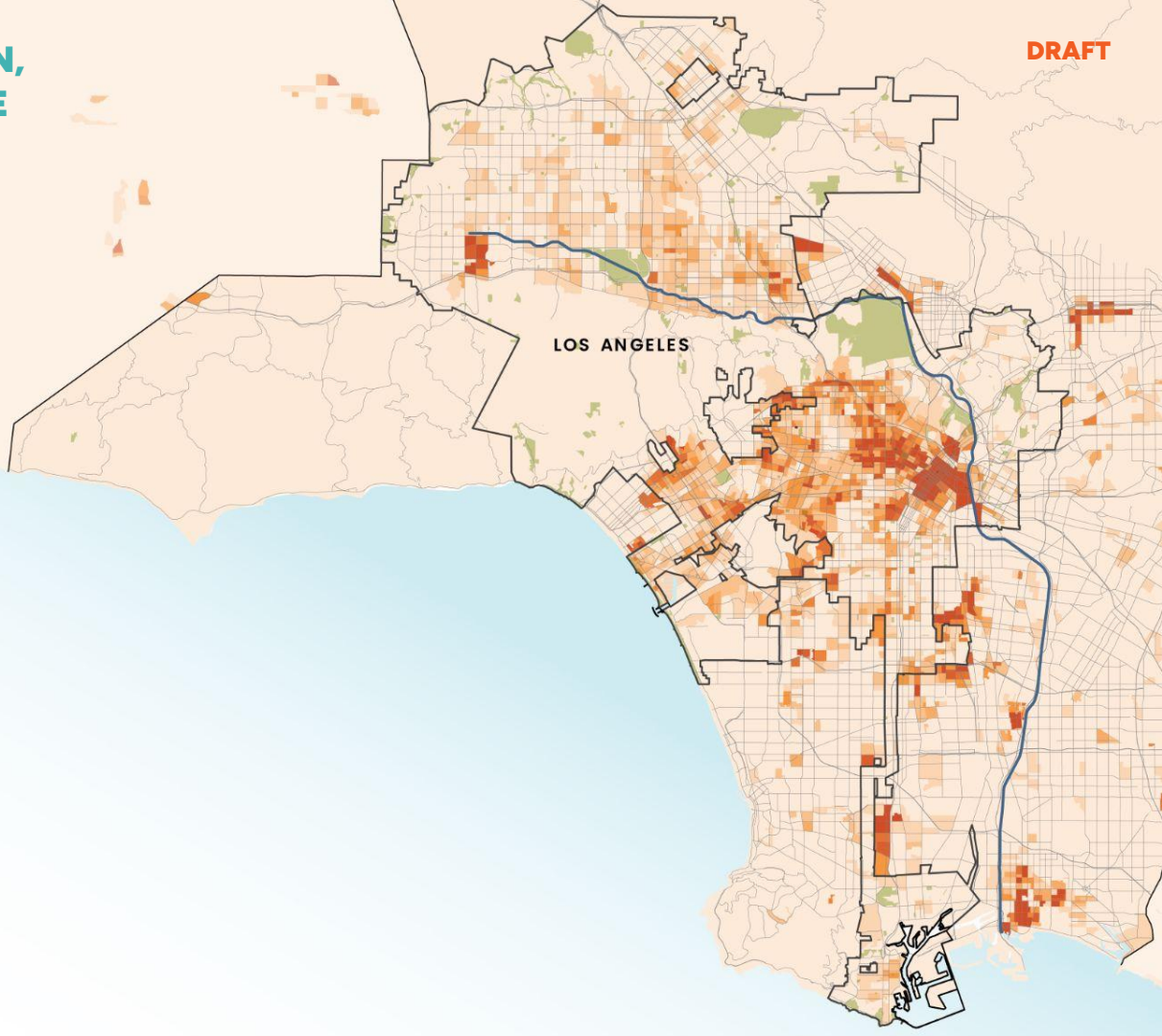


**NEIGHBORHOODS LIKE DOWNTOWN,  
WEST LAKE, AND KOREATOWN,  
ARE EXPECTED TO EXPERIENCE MORE  
POPULATION GROWTH BY 2035.**

**DRAFT**

**Household Growth Density by Square Mile  
2019-2035**

- 0-499
- 500-999
- 1,000-1,499
- 1,500-1,999
- 2,000-2,499
- 2,500-2,999
- 3,000-3,499
- 3,500-3,999
- 4,000+

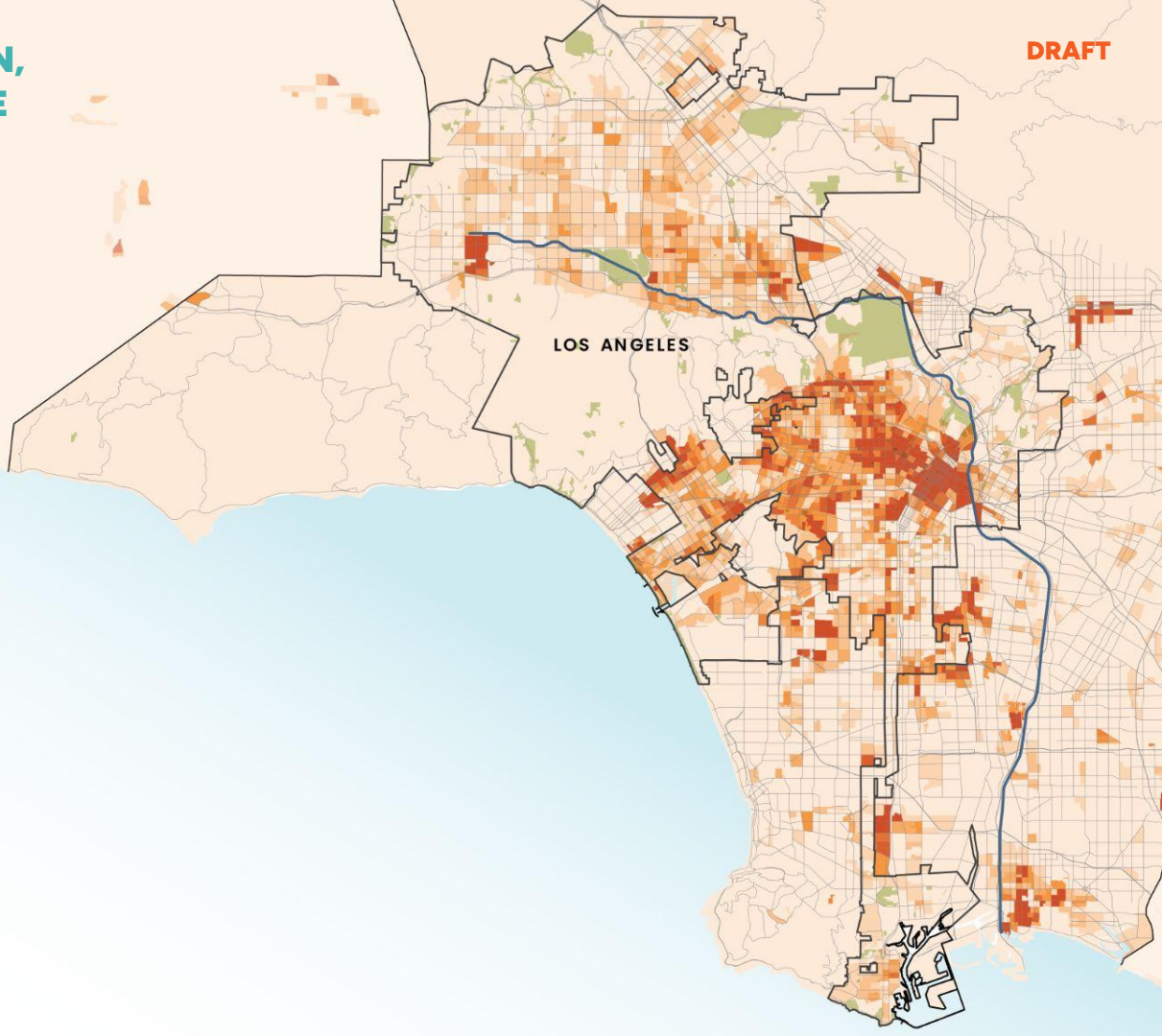
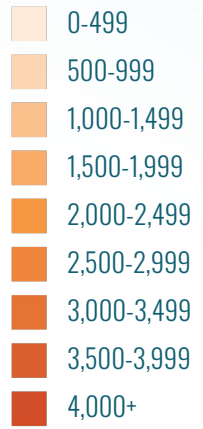


Source: Connect SoCal Growth Projections, SCAG, 2024.

**NEIGHBORHOODS LIKE DOWNTOWN,  
WEST LAKE, AND KOREATOWN,  
ARE EXPECTED TO CONTINUE TO  
EXPERIENCE GROWTH BY 2050.**

**DRAFT**

**Household Growth Density by Square Mile  
2019-2050**



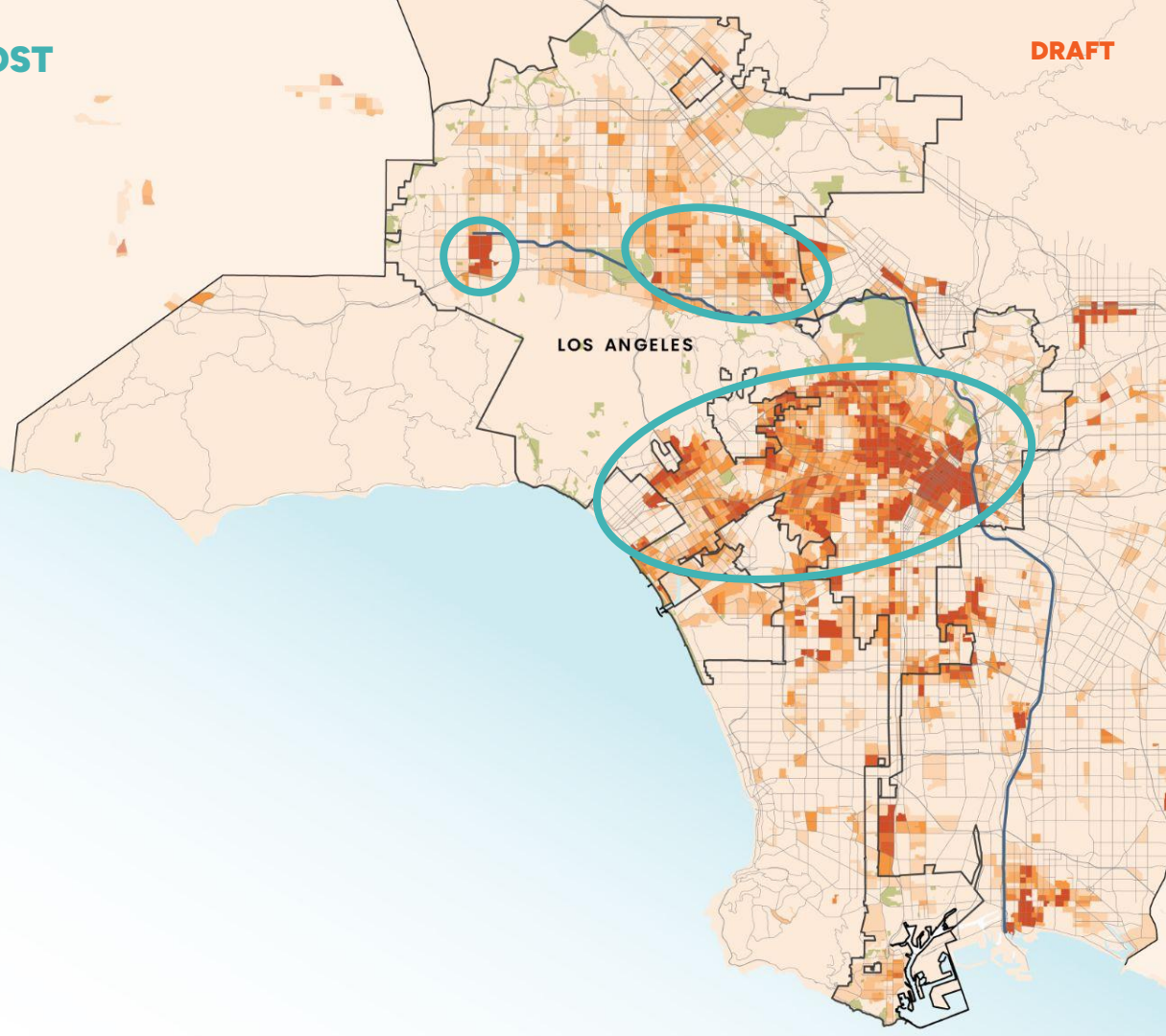
Source: Connect SoCal Growth Projections, SCAG, 2024.



## PARK PRESSURE IS LIKELY TO BE MOST ACUTE IN THESE NEIGHBORHOODS

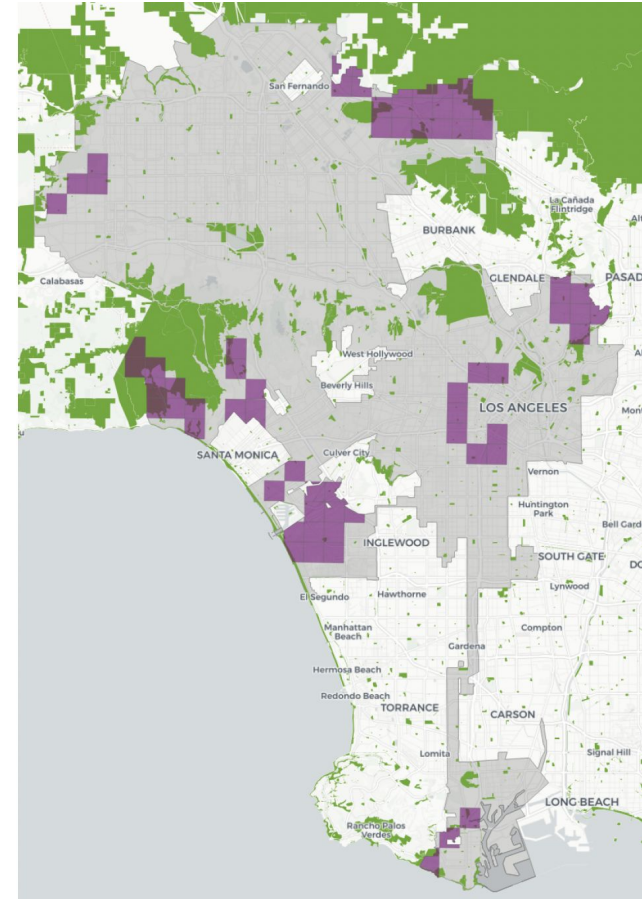
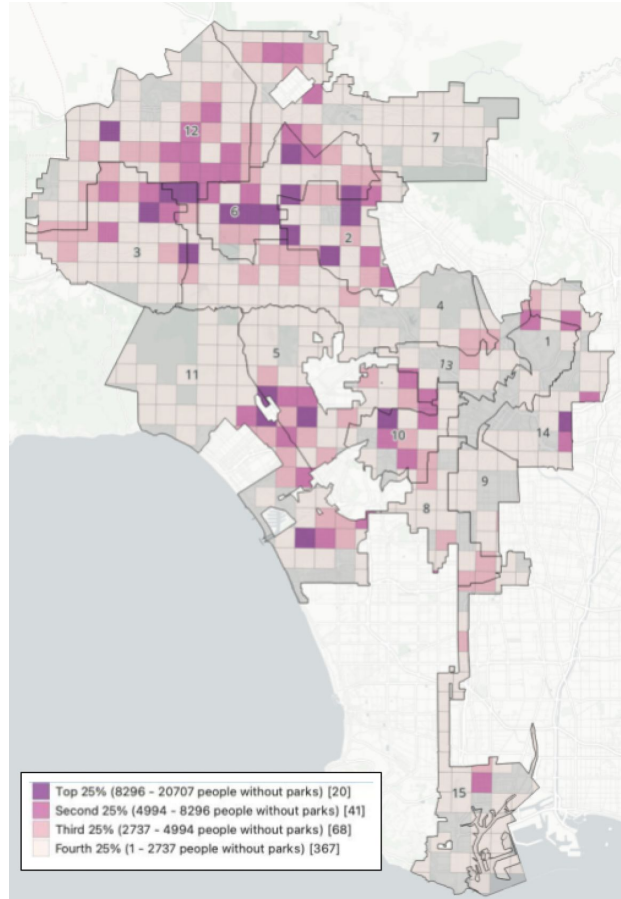
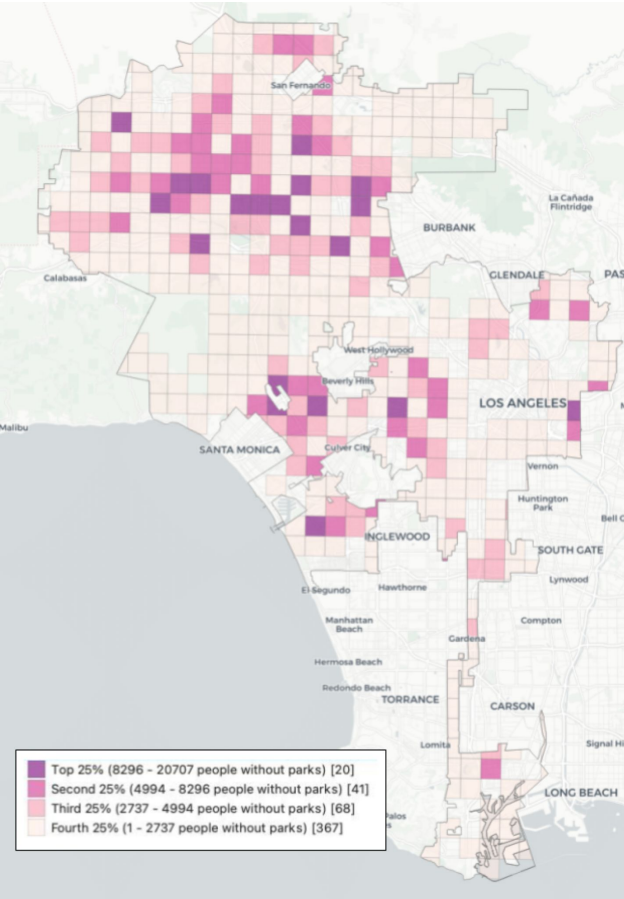
HOW SHOULD THE PNA DEFINE PARK PRESSURE?

DRAFT



# PER SQUARE MILE: PARK ACCESS

DRAFT

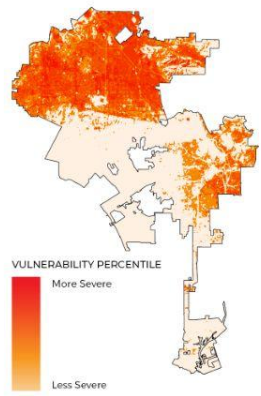


# PARKS THAT MAY SEE THE MOST CHANGE

DRAFT

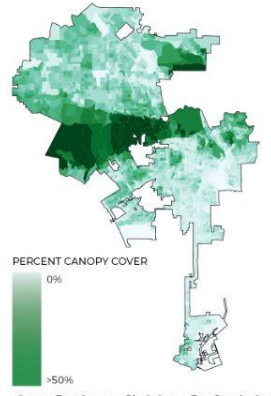


### HEAT ISLAND SEVERITY



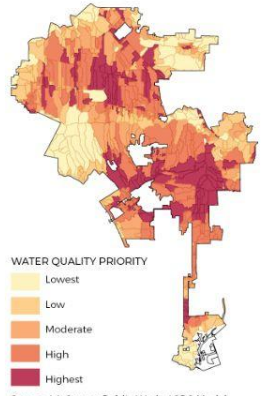
Source: Trust for Public Land Climate-Smart Cities Los Angeles, Heat Island Severity, 2019.

### TREE CANOPY COVER BY BLOCK GROUP



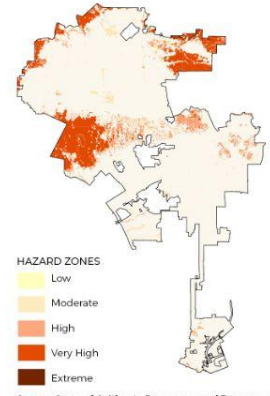
Source: Tree Canopy - Block Group, Tree People, Center for Urban Resilience (CURES) at Loyola Marymount University, 2020.

### WATER QUALITY PRIORITY



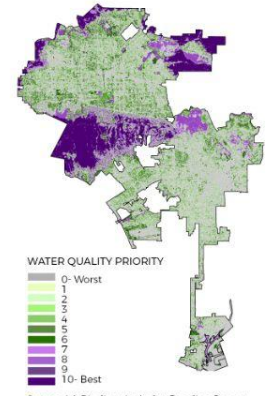
Source: LA County Public Works LSPC Model Input, 2012. <http://dpw/lacounty.gov/wmd/jrnpw/>; Geosyntec, 2018.

### FIRE THREAT SEVERITY



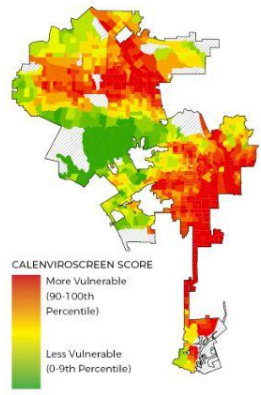
Source: State of California Department of Forestry and Fire Protection, Fire and Resource Assessment Program (FRAP) Statewide Fire Threat v14\_2, Accessed January 16th, 2023.

### HABITAT QUALITY



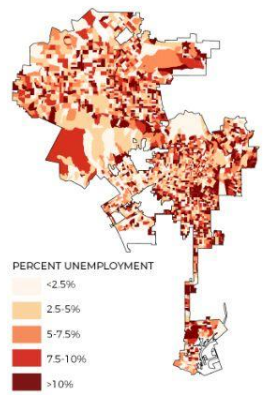
Source: LA Biodiversity Index Baseline Report, Habitat Quality, LA Sanitation, 2022.

### CALENVIROSCREEN 4.0



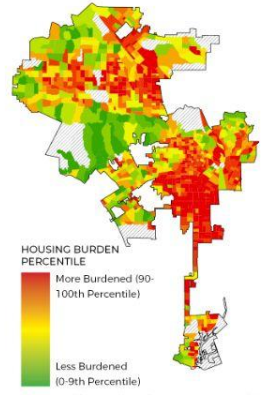
Source: California Office of Environmental Health Hazard Assessment, CalEnviroScreen4.0, 2021.

### PERCENT UNEMPLOYMENT



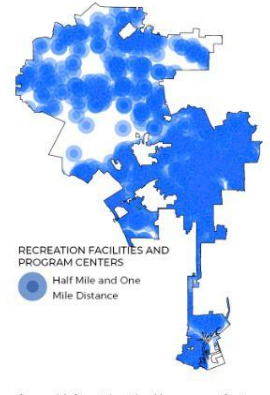
Source: U.S. Census Bureau, American Community Survey 2022 5-Year Estimates, Table B01001, 2022.

### HOUSING BURDEN



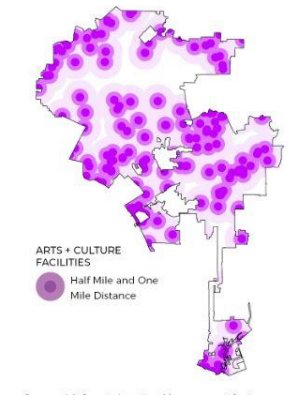
Source: California Office of Environmental Health Hazard Assessment, CalEnviroScreen4.0, 2021.

### FACILITIES + PROGRAM: RECREATION



Source: LA County Location Management System, Points of Interest

### FACILITIES + PROGRAM: ARTS/CULTURE



Source: LA County Location Management System, Points of Interest

# CONNECTING WITH LA COUNTY DATA



we all need  
**PARKS**  
PNA+

## EXECUTIVE SUMMARY

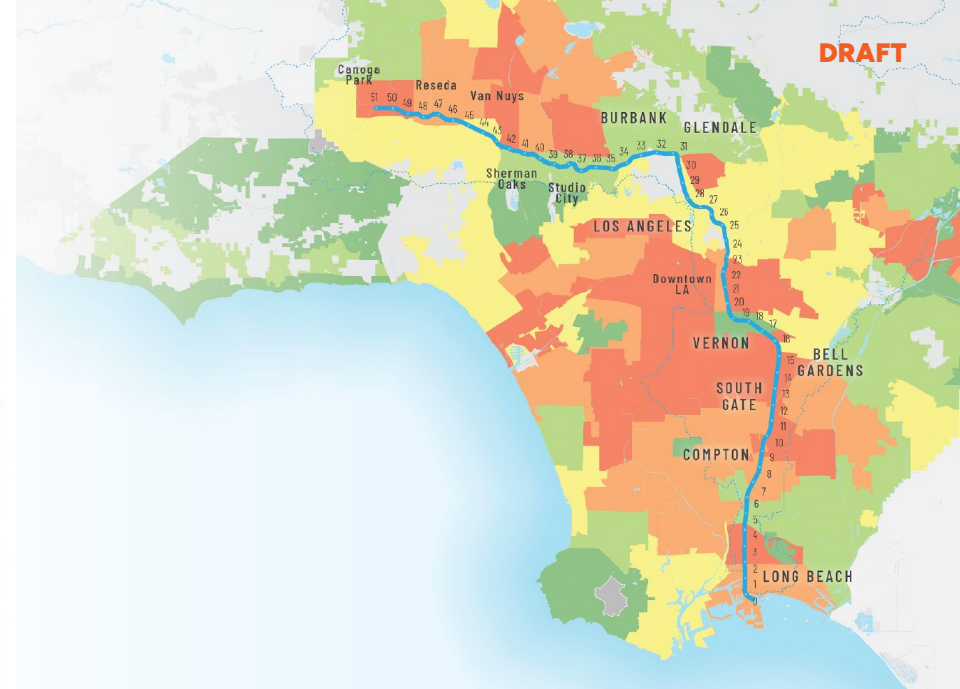
OF THE LOS ANGELES COUNTYWIDE COMPREHENSIVE  
PARKS AND RECREATION NEEDS ASSESSMENT PLUS  
(PNA+)

Adopted by the Los Angeles County Board of Supervisors on December 6, 2022

Los Angeles County  
Department of Parks and Recreation



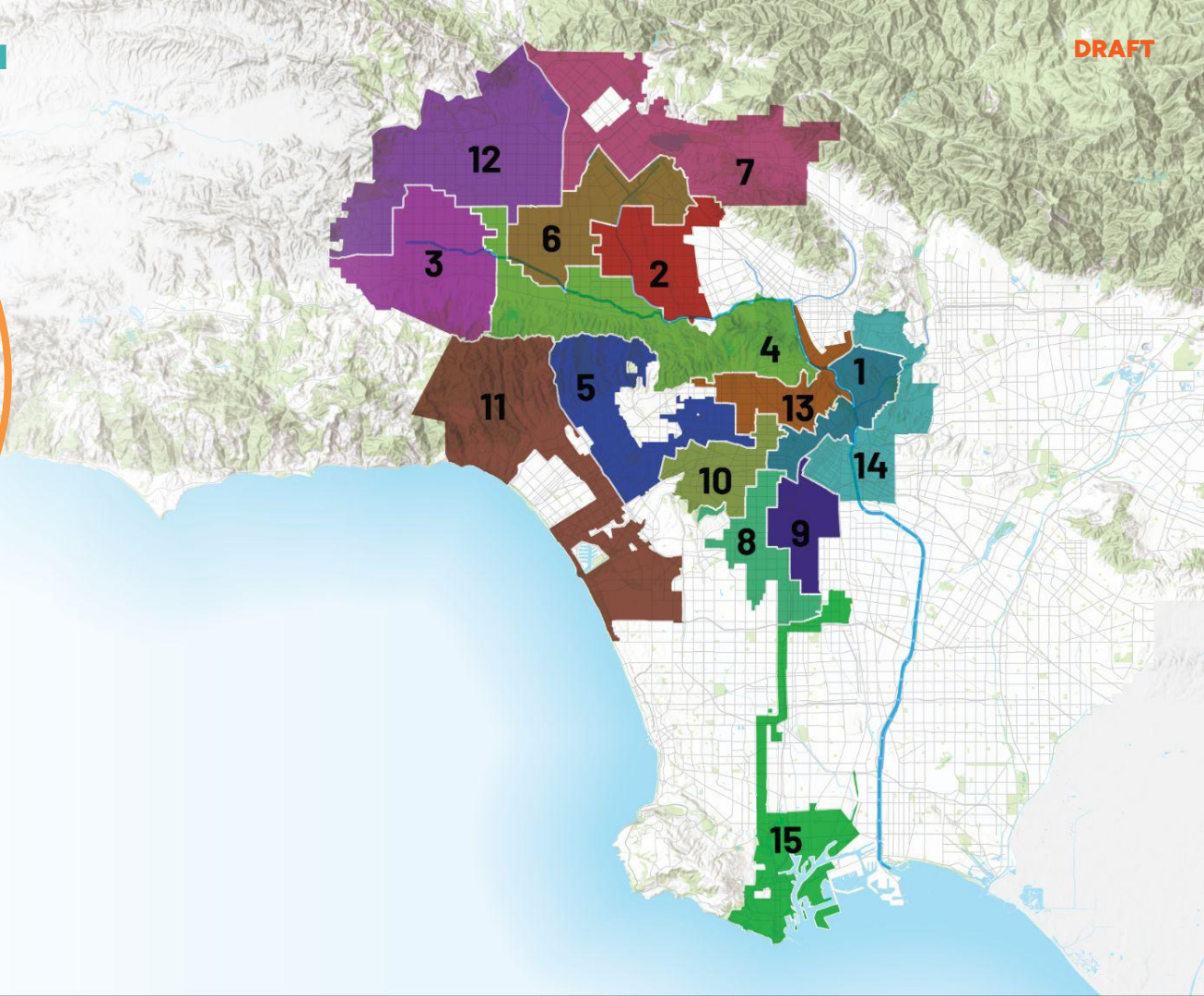
**DRAFT**



## LA COUNTY PARK CLASSIFICATIONS

	Local Park System				Regional Park System			
	<b>Park Node</b>	<b>Pocket Park</b>	<b>Neighborhood Park</b>	<b>Community Park</b>	<b>Community Regional Park</b>	<b>Regional Park</b>	<b>Special Use Park</b>	<b>Not Classified</b>
Suggested Size	≤¼ Acre	<3 Acres	3-10 Acres	10-20 Acres	20-100 Acres	>100 Acres		
Example	Benito Juarez Park	Coldwater Canyon Open Space Park	Cesar E. Chavez Park	Glassell Park & Rec Center	Hollydale Park	Griffith Park	Michael K Green Skate Park	

**Local  
Geographies  
and Lived  
Reality**



**COALITION AND CAPACITY BUILDING**



**High-Level  
Innovative  
Tools and  
Criteria**



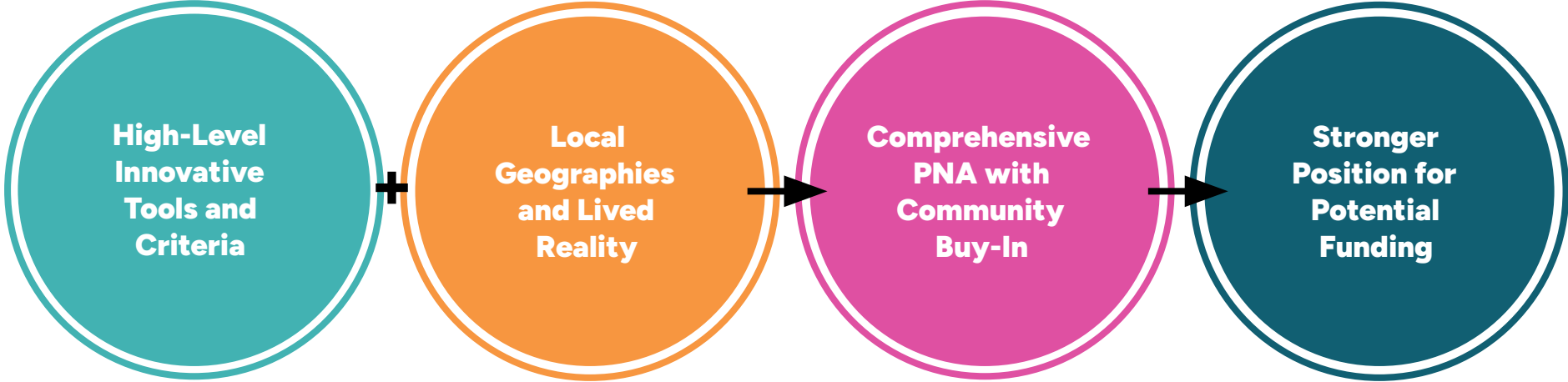
**Local  
Geographies  
and Lived  
Reality**



**Comprehensive  
PNA with  
Community  
Buy-In**



**Stronger  
Position for  
Potential  
Funding**



# PROJECT GOALS

---



A faint, light-colored map of Los Angeles is visible in the background, centered on the page. It shows the city's outline and major geographical features.

# ENGAGEMENT

---

- Educate the public about the role RAP plays within the City of Los Angeles.
- Solicit input from a diverse audience from a diverse cross-section of the City, including individuals who may not be able to attend meetings.
- Provide opportunities for communities across the City to provide feedback on the PNA process, including progress updates on the TAC, Steering Committee, and RAP components of the Draft's development.
- Include hybrid options that allow for a variety of methods based on any prevailing health restrictions, community preference, or other unforeseen requirements.

**ENGAGEMENT  
INNOVATION**



**1**  
GROUNDING

**2**  
EVALUATION

**3**  
DRAFT PNA

**4**  
FINAL PNA

JAN

FEB

MAR

APR

MAY

JUN

JUL

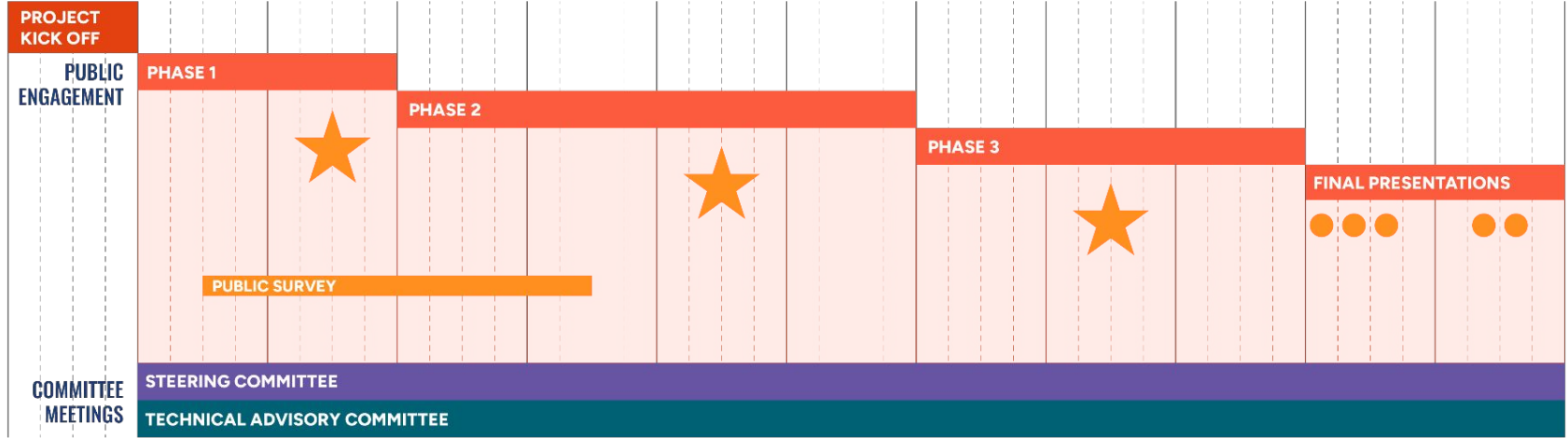
AUG

SEP

OCT

NOV

DEC





**JAN**

**FEB**

**MAR**

**APR**

**MAY**

**JUN**

**JUL**

**AUG**

**SEP**

**OCT**

**NOV**

**DEC**

- 16 Meetings
- Engagement Video
- Press Release
- Website Launch
- Survey Launch
- Social Media Launch
- Analog Postcard Mailers

- 40 Meetings
- Short Format Engagement Video(s)
- Press Release
- Website Engagement Updates
- Survey Open
- Social Media Posts

- 16 Meetings
- Short Format Engagement Video(s)
- Press Release
- Social Media Posts

- Briefing Presentations
- Engagement Video
- Website Update
- Social Media Posts

**PROVIDING FUNDING FOR COMMUNITY PARTNERS:  
BUILDING BUY-IN AND CAPACITY**

**DRAFT**



## LA Park Needs Assessment

Help shape the future of parks and recreation in Los Angeles!

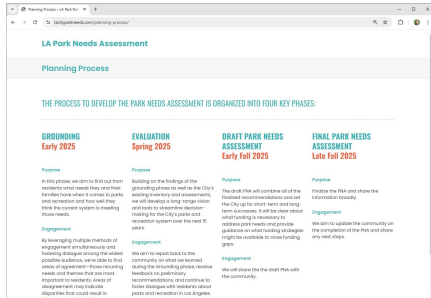
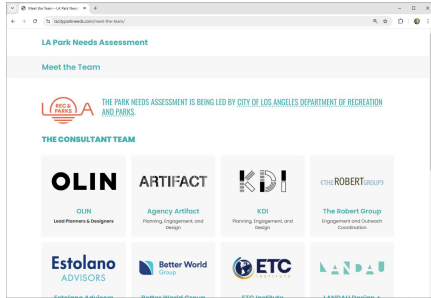
# Stay tuned for upcoming meetings and surveys



THE CITY OF LOS ANGELES IS EXCITED TO BEGIN WORK ON UPDATING ITS PARK NEEDS ASSESSMENT FOR THE FIRST TIME SINCE 2009. THE PARK NEEDS ASSESSMENT WILL BE A ROADMAP TO JUST AND FAIR CAPITAL INVESTMENT IN PARKS AND RECREATION AND EQUITABLE CONNECTIONS TO QUALITY PARKS AND RECREATION, TO MEET CURRENT AND FUTURE NEEDS OF RESIDENTS!

## GET INVOLVED!

Be part of the planning process for the Park Needs Assessment! You can participate by attending an engagement event or taking the online survey.





# STEERING COMMITTEE

---



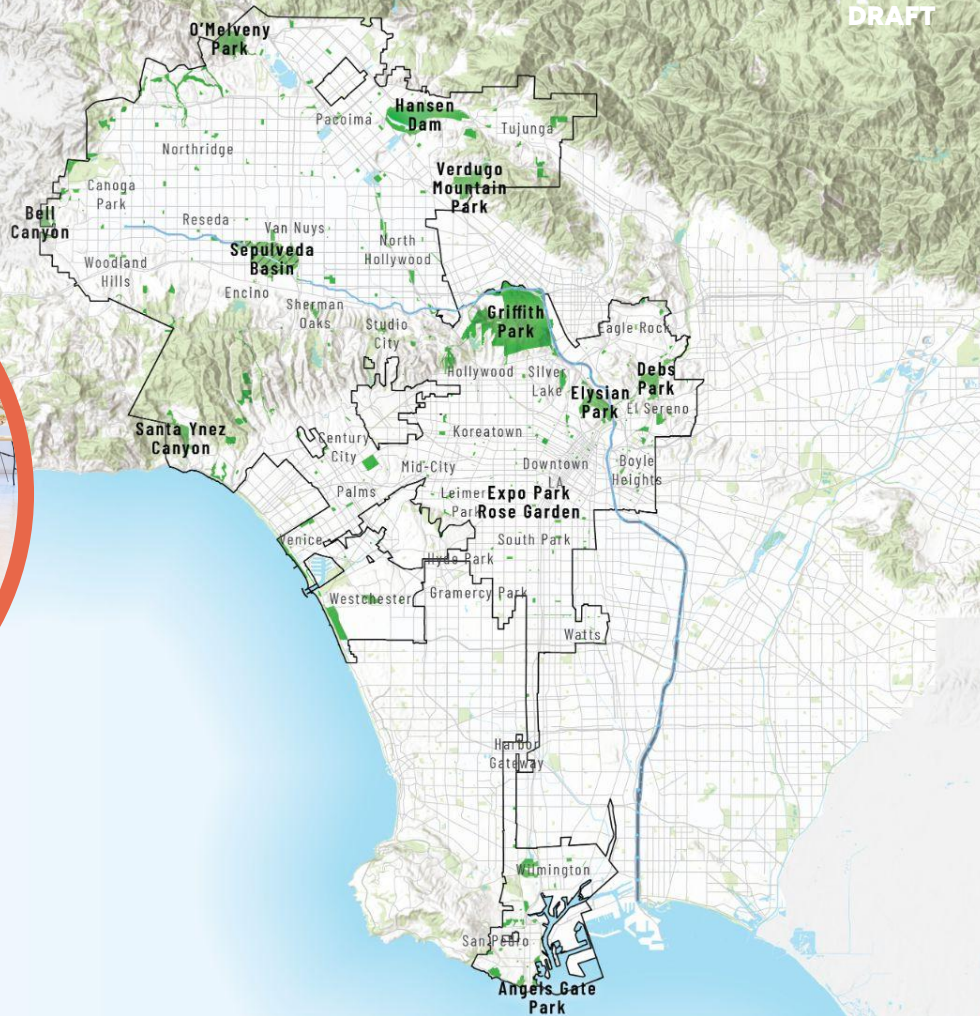
- **Range of community organizations tied to RAP's Core Services**
- **Range of organizations tied to environmental issues**
- **Range of organizations tied to varied geographic areas**
- **Range of public officials and members of the public to foster dialog**
- **Individuals and organizations that can advocate for parks support**



# TECHNICAL ADVISORY COMMITTEE

---

- **Experts and agency representatives that can provide insight into City initiatives and tools**
- **Experts that can provide insight on best practices for park needs evaluation**
- **Elected Official representatives that can liaise with experts, ask questions, and raise topics**



# LA PARKS NEEDS ASSESSMENT

DRAFT

## OLIN



ARTIFACT



HR&A

Estolano  
ADVISORS

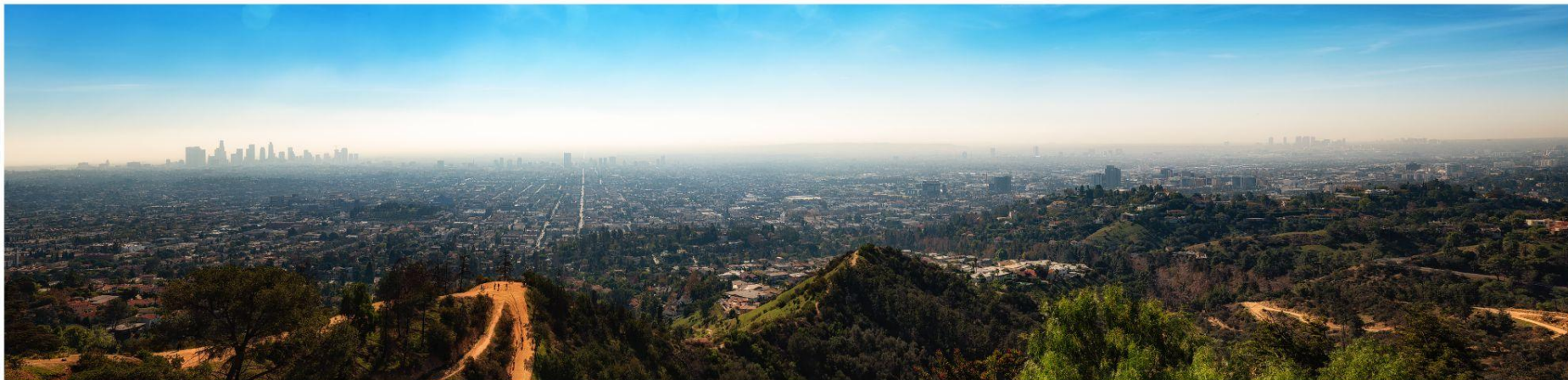
Geosyntec  
consultants



West of West



CALVADA  
SURVEYING, INC.



**2025 LA PARK NEEDS ASSESSMENT****DRAFT Literature Review List**

<b>Document Date</b>	<b>Document Title</b>	<b>Key Document</b>	<b>Consultant Team (If Applicable)</b>	<b>Prepared By</b>	<b>Theme</b>	<b>Link to Public Web Address (If Applicable)</b>	<b>Date Accessed (If Applicable)</b>
09 October 2009	City of Los Angeles Department of Recreation and Parks 2009 Citywide Community Needs Assessment: Final Report	<b>Yes</b>	PROs Consulting, Mia Lehrer + Associates	City of LA Department of Recreation and Parks	Park and/or Facility Assessment	<a href="https://www.laparks.org/sites/default/files/projects/2009%20Community%20Needs%20Assessment%20-%20Final.pdf">https://www.laparks.org/sites/default/files/projects/2009%20Community%20Needs%20Assessment%20-%20Final.pdf</a>	12/17/2024
2009	2009 Assessment: Appendix C - Citywide Maps and Area Planning Commissions Map		PROs Consulting, Mia Lehrer + Associates	City of LA Department of Recreation and Parks	Park and/or Facility Assessment		
09 May 2016	Los Angeles Countywide Comprehensive Parks & Recreation Needs Assessment		Placeworks	County of Los Angeles Department of Parks and Recreation	Park and/or Facility Assessment	<a href="https://lacountyparkneeds.org/final-report/">https://lacountyparkneeds.org/final-report/</a>	12/17/2024
06 December 2022	Los Angeles Countywide Comprehensive Parks & Recreation Needs Assessment PLUS	<b>Yes</b>	MIG	County of Los Angeles Department of Parks and Recreation AND Regional Parks and Open Space District	Park and/or Facility Assessment	<a href="https://lacountyparkneeds.org/pnaplus-report/">https://lacountyparkneeds.org/pnaplus-report/</a>	12/17/2024
April 1999	Community Recreation Needs Survey (1999)	<b>Yes</b>	N/A	City of LA Department of Recreation and Parks	Park and/or Facility Assessment		
2018	Park Condition Assessment Report	<b>Yes</b>	N/A	RAP Planning, Maintenance, and Construction Branch	Park and/or Facility Assessment		
2004	The State of City Swimming Pools in Los Angeles	<b>Yes</b>	N/A	City of LA Department of Recreation and Parks	Park and/or Facility Assessment		
2006	RAP Pool Assessment Report		N/A	RAP Planning, Maintenance, and Construction Branch	Park and/or Facility Assessment		
1973	LA General Plan (Open Space Element)		N/A	LA Department of City Planning	General or Comprehensive Planning		1/17/2025
1979	Public Recreation Plan: Background/Implementation Report	<b>Yes</b>	N/A	Department of City Planning and the Department of Recreation and Parks, Los Angeles, California	General or Comprehensive Planning		
1983	Addenda to Public Recreation Plan: Background/Implementation Report		N/A	Department of City Planning and the Department of Recreation and Parks, Los Angeles, California	General or Comprehensive Planning		
2005	Strategic Plan: City of Los Angeles Department of Recreation and Parks, Fiscal Year 2005-2006		N/A	City of LA Department of Recreation and Parks	Strategic or Operations Planning		
2018	Department of Recreation and Parks: Park Proud LA - Strategic Plan 2018-2022		N/A	City of LA Department of Recreation and Parks	Strategic or Operations Planning		
February 2003	City of Los Angeles RAP: Infrastructure Report		N/A	City of LA Department of Recreation and Parks	Park and/or Facility Assessment		
2005	DRAFT: 2005 Infrastructure Report: "Leadership and Partnership"		N/A	City of LA Department of Recreation and Parks	Park and/or Facility Assessment		
August 2015	Stormwater Capture Master Plan		Geosyntec	City of Los Angeles Department of Water and Power	Water Resources	<a href="#">LADWPSStormwaterCaptureMasterPlan_MainReport_101615.pdf</a>	1/10/2025

**2025 LA PARK NEEDS ASSESSMENT**

**DRAFT Literature Review List**

<b>Document Date</b>	<b>Document Title</b>	<b>Key Document</b>	<b>Consultant Team (If Applicable)</b>	<b>Prepared By</b>	<b>Theme</b>	<b>Link to Public Web Address (If Applicable)</b>	<b>Date Accessed (If Applicable)</b>
January 2016	EWMP for the Upper Los Angeles River Watershed		Black & Veatch, ch2m, Paradigm	Upper Los Angeles River Enhanced Watershed Management Group	Water Resources	EWMP Upper Los Angeles River	1/10/2025
November 2, 2018	Santa Monica Bay Jurisdictional Group 2 and 3 EWMP		Geosyntec, MWH, CW, M2 Resource Consulting, Inc.	Santa Monica Bay Enhanced Watershed Management Group	Water Resources	<a href="https://www.waterboards.ca.gov/losangeles/water_issues/programs/stormwater/municipal/watershed_management/santa_monica/EWMPsMBJ2&amp;3revisedfortimeextension110218.pdf">https://www.waterboards.ca.gov/losangeles/water_issues/programs/stormwater/municipal/watershed_management/santa_monica/EWMPsMBJ2&amp;3revisedfortimeextension110218.pdf</a>	1/10/2025
January 2016	EWMP for the Ballona Creek Watershed		Black & Veatch, CDM Smith, CH2M Hill, Larry Walker Associates, Paradigm, Tetra Tech	Ballona Creek Watershed Management Group	Water Resources	BallonaCreek_RevisedEWMP_corrected2016Feb1.pdf	1/10/2025
February 2016	EWMP for the Dominguez Channel Watershed Management Area Group		N/A	Dominguez Channel Watershed Management Area Group, City of Los Angeles, County of Los Angeles, LACFD	Water Resources	DCWVG_EWMP_2-25-15.pdf	1/10/2025
February 26, 2018	Marina Del Rey EWMP Plan		N/A	Marina del Rey Enhanced Watershed Management Program Agencies	Water Resources	20180226MdREWMPRevised.pdf	1/10/2025
May 28, 2015	Watershed Management Program for Santa Monica Bay Jurisdictional Group 7 within the City of Los Angeles		MWH, Geosyntec, CW, M2 Resource Consulting	City of Los Angeles & Los Angeles County Flood Control District	Water Resources	<a href="https://www.waterboards.ca.gov/losangeles/water_issues/programs/stormwater/municipal/watershed_management/santa_monica/santamonica7/SantaMonicaBayJG7RevisedWMP.pdf">https://www.waterboards.ca.gov/losangeles/water_issues/programs/stormwater/municipal/watershed_management/santa_monica/santamonica7/SantaMonicaBayJG7RevisedWMP.pdf</a>	1/17/2025
2022	City of LA Bureau of Sanitation, Biodiversity Index Baseline Report		N/A	LA Department of Sanitation (LASAN)	Sustainability and Resilience	<a href="https://sanitation.lacity.gov/cs/groups/public/documents/document/y250/mdc2/~edisp/cnt076756.pdf">https://sanitation.lacity.gov/cs/groups/public/documents/document/y250/mdc2/~edisp/cnt076756.pdf</a>	1/17/2025
2022	LA River Master Plan	<b>Yes</b>	Geosyntec, OLIN, Gehry Partners	County of LA Public Works	Corridor Planning	<a href="https://pw.lacounty.gov/uploads/swp/LARiverMasterPlan-FINAL-DIGITAL-COMPRESSED.pdf">https://pw.lacounty.gov/uploads/swp/LARiverMasterPlan-FINAL-DIGITAL-COMPRESSED.pdf</a>	1/17/2025
2007	LA River Revitalization Master Plan		Mia Lehrer and Associates	City of Los Angeles Department of Public Works Bureau of Engineering	Corridor Planning	<a href="https://clkrep.lacity.org/onlinedocs/2006/06-0186_rpt_misc_4-23-07.pdf">https://clkrep.lacity.org/onlinedocs/2006/06-0186_rpt_misc_4-23-07.pdf</a>	1/17/2025
2009	USACE Sepulveda Basin Master Plan		Geosyntec, OLIN, The Robert Group, Agency: Artifact, ALTA, PSOMAS, Estolano Advisors, Leland Saylor	City of LA Department of Public Works, Bureau of Engineering	Infrastructure Planning	<a href="https://www.spl.usace.army.mil/portals/17/docs/publicnotices/sepulveda_master10-1.pdf">https://www.spl.usace.army.mil/portals/17/docs/publicnotices/sepulveda_master10-1.pdf</a>	1/17/2025
2011	USACE Hansen Dam Master Plan	<b>Yes</b>	N/A	US Army Corps of Engineers; Los Angeles District	Infrastructure Planning	<a href="https://usace.contentdm.oclc.org/digital/collection/p16021coll7/id/2807">https://usace.contentdm.oclc.org/digital/collection/p16021coll7/id/2807</a>	
2013	A Vision for Griffith Park		N/A	City of LA Department of Recreation and Parks	Park Planning	<a href="https://www.laparks.org/griffithpark/pdf/agenda/visionPk.pdf">https://www.laparks.org/griffithpark/pdf/agenda/visionPk.pdf</a>	1/15/2025
2006	Elysian Park Master Plan (2006)	<b>Yes</b>	Withers & Sandgren, Ltd	City of LA Department of Recreation and Parks	Park Planning	<a href="https://www.laparks.org/planning/park-planning/elysian-park">https://www.laparks.org/planning/park-planning/elysian-park</a>	1/15/2025

**2025 LA PARK NEEDS ASSESSMENT**

**DRAFT Literature Review List**

<b>Document Date</b>	<b>Document Title</b>	<b>Key Document</b>	<b>Consultant Team (If Applicable)</b>	<b>Prepared By</b>	<b>Theme</b>	<b>Link to Public Web Address (If Applicable)</b>	<b>Date Accessed (If Applicable)</b>
2000	2000 Ernest E. Debs Regional Park Framework Plan		Envicom Corporation	Debs Park Community Advisory Committee	Park Planning	<a href="https://www.laparks.org/planning/pdf/2000%20Ernest%20E%20Debs%20Regional%20Park%20Framework%20Plan.pdf">https://www.laparks.org/planning/pdf/2000%20Ernest%20E%20Debs%20Regional%20Park%20Framework%20Plan.pdf</a>	1/17/2025
June 2024	Sepulveda Basin Vision Plan		Geosyntec, OLIN	The City of LA Bureau of Engineering, The City of LA Recreation and Parks	Park Planning	<a href="https://eng2.lacity.org/sites/g/files/wph726/f/JUN2024-SBVP-VisionPlan_Compressed.pdf">https://eng2.lacity.org/sites/g/files/wph726/f/JUN2024-SBVP-VisionPlan_Compressed.pdf</a>	1/3/2025
2019	OurCounty: Los Angeles Countywide Sustainability Plan	<b>Yes</b>	BuroHappold Engineering	LA County Chief Sustainability Office	Sustainability and Resilience	<a href="https://ourcountyla.lacounty.gov/wp-content/uploads/2019/07/OurCounty-Final-Plan.pdf">https://ourcountyla.lacounty.gov/wp-content/uploads/2019/07/OurCounty-Final-Plan.pdf</a>	1/15/2025
2015	The Sustainable City pLAn		PwC Consulting, TBWA\CHIAT \DAY, Bloomberg Associates	Office of the Mayor of the City of Los Angeles	Sustainability and Resilience	<a href="https://plan.mayor.lacity.gov/sites/g/files/wph2176/files/2022-12/2015_Sustainable_City_pLAn.pdf">https://plan.mayor.lacity.gov/sites/g/files/wph2176/files/2022-12/2015_Sustainable_City_pLAn.pdf</a>	1/7/2025
February 2020	Handbook for Gender-Inclusive Urban Planning and Design	<b>Yes</b>	The World Bank, KDI	KDI	Gender, Inclusive Planning	<a href="https://www.worldbank.org/en/topic/urbandevelopment/publication/handbook-for-gender-inclusive-urban-planning-and-design">https://www.worldbank.org/en/topic/urbandevelopment/publication/handbook-for-gender-inclusive-urban-planning-and-design</a>	1/13/2025
January 2021	"Coexistence in Public Space Engagement tools for creating shared spaces in places with homelessness"	<b>Yes</b>	SPUR (San Francisco Bay Area Planning and Urban Research Association)	Gehl, Guadalupe River Park Conservancy, City of San José Parks Recreation and Neighborhood Services Department	Homelessness, Engagement, Unhouse in Pubic Space	<a href="https://www.spur.org/publications/spur-report/2021-01-25/coexistence-public-space?utm_medium=redirect&amp;utm_source=coexistence">https://www.spur.org/publications/spur-report/2021-01-25/coexistence-public-space?utm_medium=redirect&amp;utm_source=coexistence</a>	1/7/2025
September 2021	National Monument Audit	<b>Yes</b>	Monument Lab	Monument Lab, The Mellon Foundation	Monuments, Commemorative Landscapes, Public History, Civic Art	<a href="https://monumentlab.com/audit">https://monumentlab.com/audit</a>	1/17/2025
August 2024	Great parks should not uproot communities: Green Gentrification risk factors and anti-displacement options		Alessandro Rigolon, The University of Utah (Reviewed by the Trust for Public Land staff and board)	Trust for Public Land	Green gentrification, displacement	<a href="https://www.tpl.org/resource/great-parks-should-not-uproot-communities">https://www.tpl.org/resource/great-parks-should-not-uproot-communities</a>	1/13/2025
September 2017	OurLA 2040 Open Space Working Group	<b>Yes</b>	N/A	Department of City Planning	General or Comprehensive Planning	<a href="https://planning.lacity.gov/plans-policies/community-plan-update/general-news-item/ourla2040-open-space-working-group-summary">https://planning.lacity.gov/plans-policies/community-plan-update/general-news-item/ourla2040-open-space-working-group-summary</a>	1/14/2025
March 2021	2021-2025 Statewide Comprehensive Outdoor Recreation Plan		GreenInfo Network	California Department of Parks and Recreation - Office of Grants and Local Services	Park and/or Facility Assessment	<a href="https://www.parksforcalifornia.org/scorp/2021">https://www.parksforcalifornia.org/scorp/2021</a>	1/6/2025
March 2021	California's Vision for Park Equity 2000–2020: Transforming Park Access with Data and Technology	<b>Yes</b>	GreenInfo Network	California Department of Parks and Recreation - Office of Grants and Local Services	Park and/or Facility Assessment	<a href="https://www.parksforcalifornia.org/park_equity">https://www.parksforcalifornia.org/park_equity</a>	1/6/2025
June 2020	Heat Vulnerability in Los Angeles County		Center for Resilient Cities and Landscapes at Columbia University	Los Angeles County	Sustainability and Resilience	<a href="https://crcl.columbia.edu/sites/default/files/content/Southern%20California/LA%20County_Heat_report_200617_compressed.pdf">https://crcl.columbia.edu/sites/default/files/content/Southern%20California/LA%20County_Heat_report_200617_compressed.pdf</a>	1/17/2025